

ELEV 938

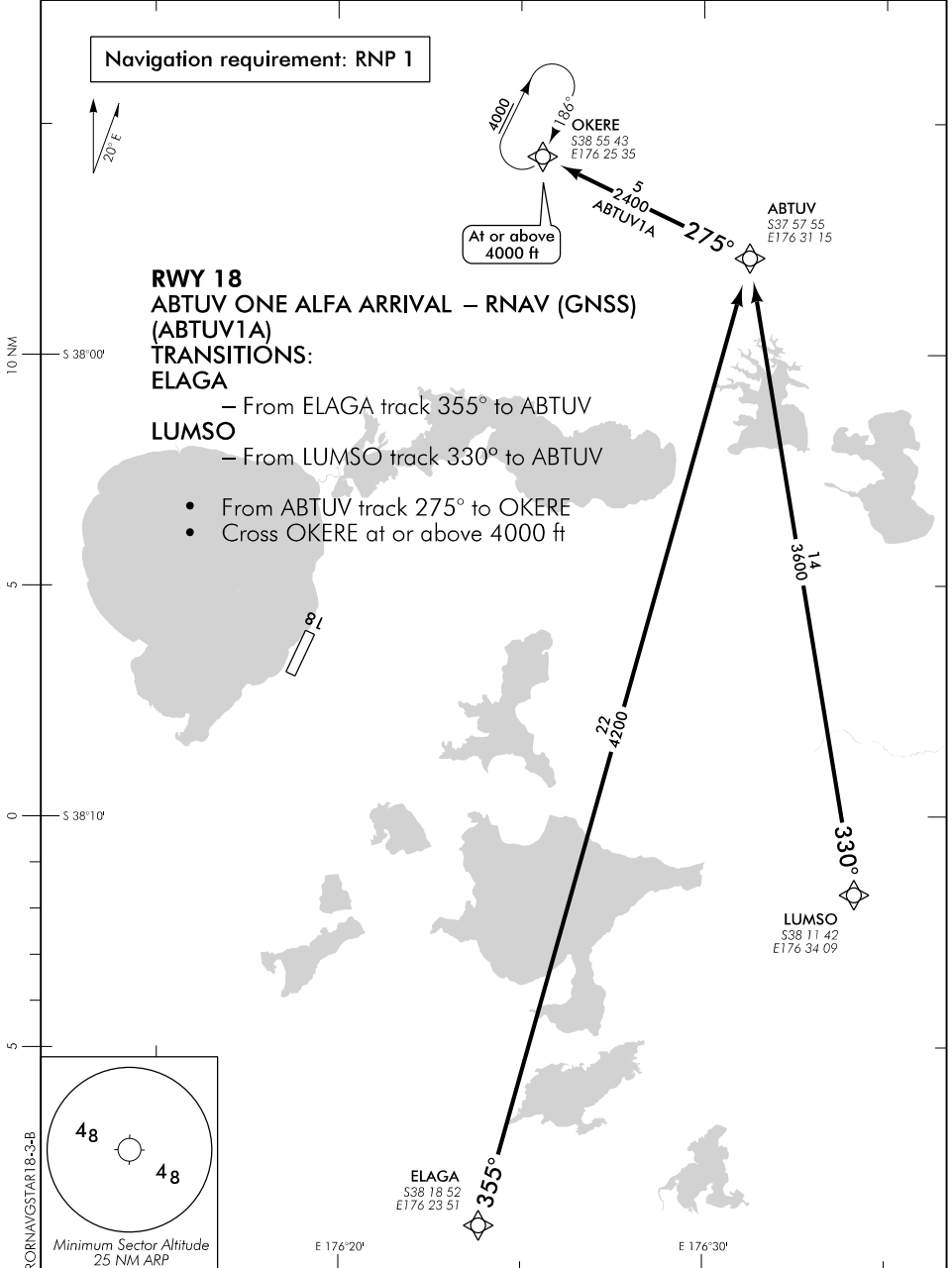
CAT A,B,C

# ROTORUA

NZRO

## RNAV (GNSS) STAR RWY 18 (3)

CHRISTCHURCH CONTROL: 119.5 123.8 TOWER: 121.2 120.1 ATIS: 128.8 UNATTENDED: 121.2



Changes from 10 NOV 16: OKERE HDG INBD track.

**Effective: 25 MAY 17**

