

ELEV 938

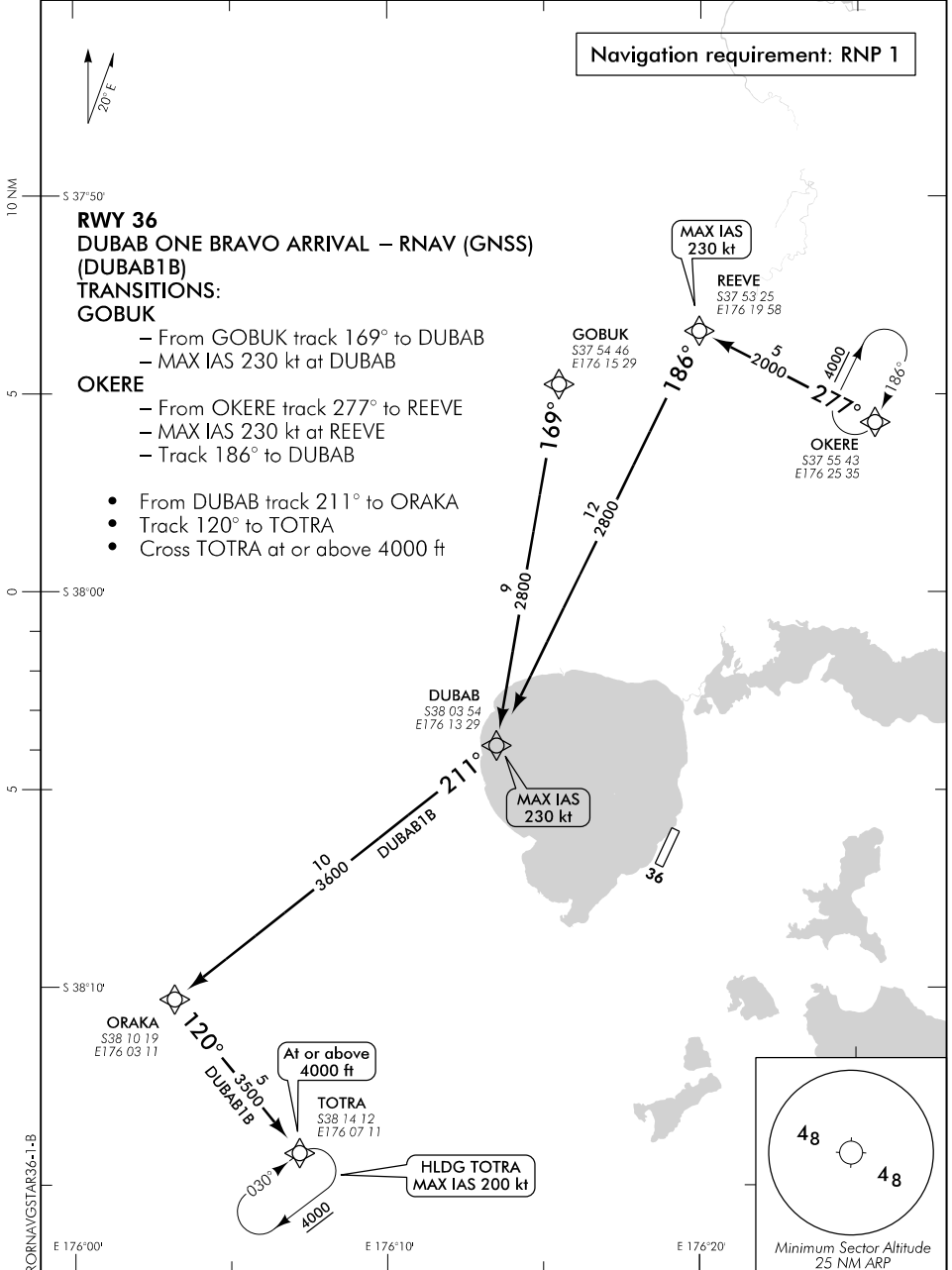
CAT A,B,C

ROTORUA

NZRO

RNAV (GNSS) STAR RWY 36 (1)

CHRISTCHURCH CONTROL: 119.5 123.8 TOWER: 121.2 120.1 ATIS: 128.8 UNATTENDED: 121.2



Changes from 10 NOV 16: OKERE HLDG INBD track.

Effective: 25 MAY 17

ELEV 938

CAT A,B,C

ROTORUA

NZRO

RNAV (GNSS) STAR RWY 36 (2)

CHRISTCHURCH CONTROL: 119.5 123.8 TOWER: 121.2 120.1 ATIS: 128.8 UNATTENDED: 121.2

Navigation requirement: RNP 1

RWY 36 IBAMU ONE BRAVO ARRIVAL – RNAV (GNSS) (IBAMU1B)

- From IBAMU track 018° to TOTRA
- Cross TOTRA at or above 4000 ft

INTOX ONE BRAVO ARRIVAL – RNAV (GNSS) (INTOX1B)

- From INTOX track 358° via KILAL to TOTRA
- Cross TOTRA at or above 4000 ft

