

ELEV 938

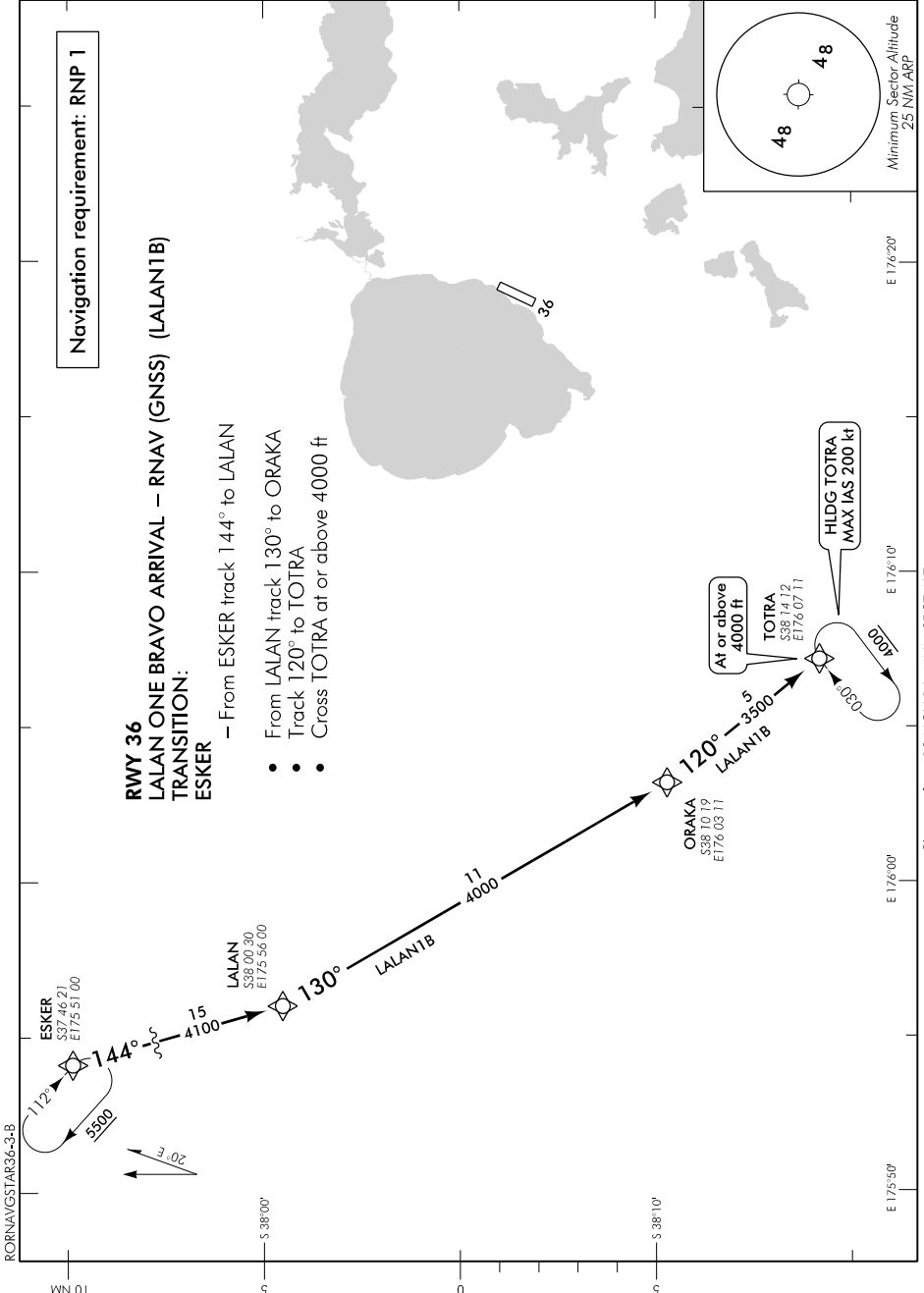
CAT A,B,C

ROTORUA

NZRO

RNAV (GNSS) STAR RWY 36 (3)

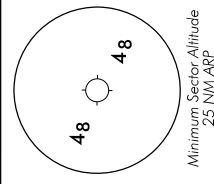
CHRISTCHURCH CONTROL: 119.5 123.8 TOWER: 121.2 120.1 ATIS: 128.8 UNATTENDED: 121.2



Navigation requirement: RNP 1

RWY 36
LALAN ONE BRAVO ARRIVAL – RNAV (GNSS) (LALAN1B)
TRANSITION:
ESKER

- From ESKER track 144° to LALAN
- From LALAN track 130° to ORAKA
- Track 120° to TOTRA
- Cross TOTRA at or above 4000 ft



Changes from 10 NOV 16: MNM SECT ALT correction.

Effective: 2 FEB 17

