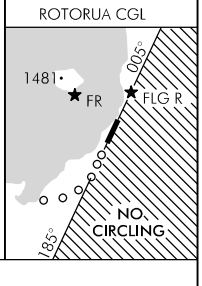
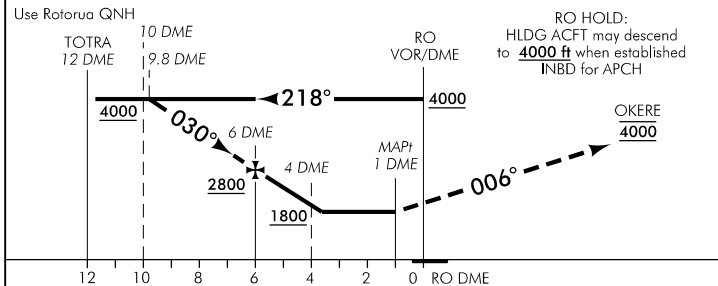
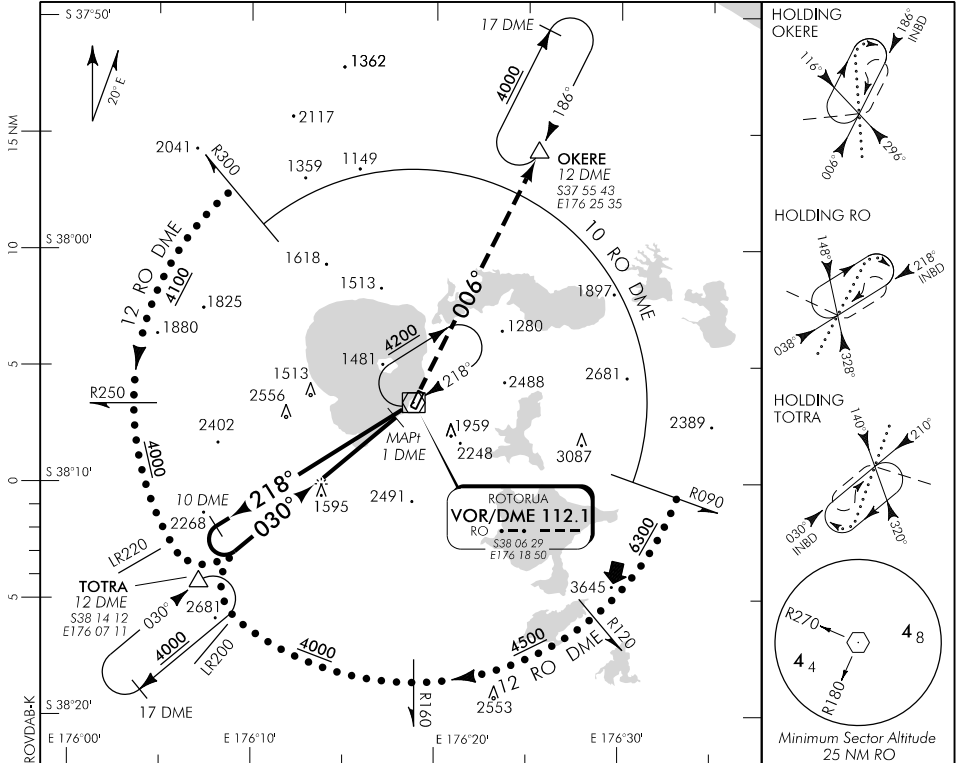


ELEV 938

CAT A,B

ROTORUA VOR/DME A

CHRISTCHURCH CONTROL: 119.5 123.8 TOWER: 121.2 120.1 ATIS: 128.8 UNATTENDED: 121.2



MISSED APCH: Track 006° to OKERE 4000

DME DIST	10	9	8	7	6	5	4	3	2.4	MAP1 DME
Advisory Altitude 5.2%	4050	3730	3420	3100	2780	2460	2140	1820	MDA	MDA
Category	A			B			C		D	
Circling *	1620(682) - 1900			1880(942) - 2800			NA			

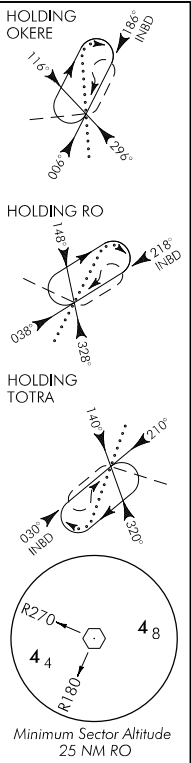
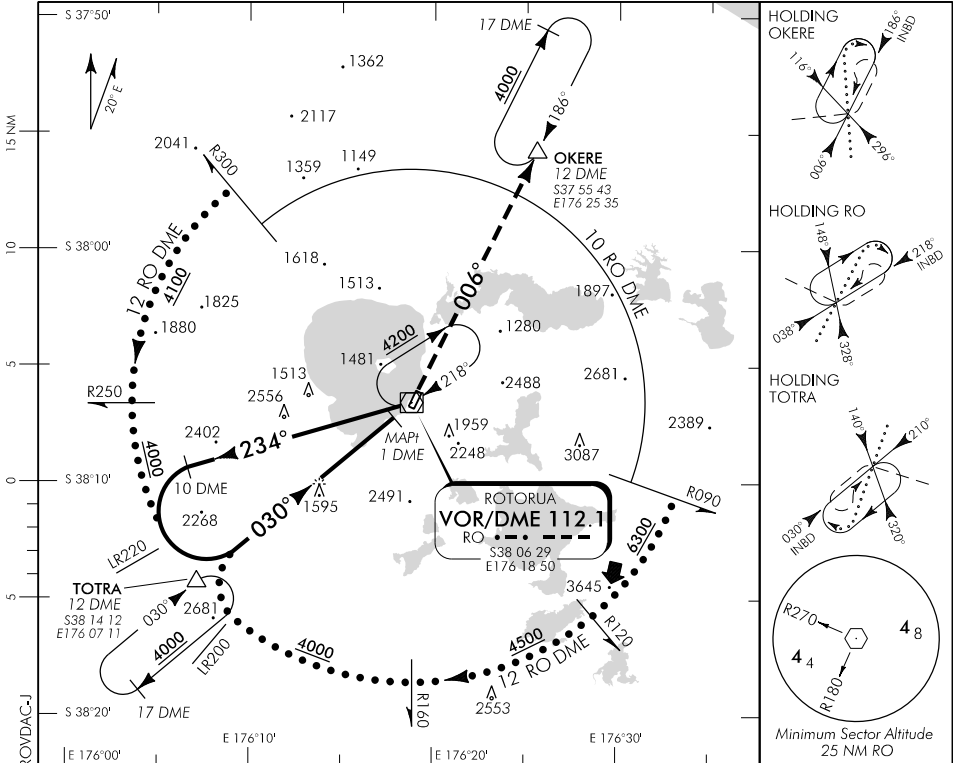
* Circling NA South East of RWY 18/36. CGL required for night operations landing RWY 36 and take-off RWY 18

Warning: RWY 36 PAPI - use prohibited beyond 3 DME due to obstacle clearance infringement

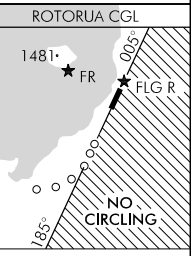
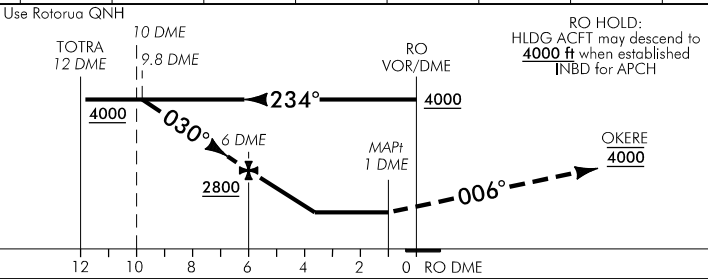
Effective: 30 MAR 17

Changes from 10 NOV 16: Obstacle added.

CHRISTCHURCH CONTROL: 119.5 123.8 TOWER: 121.2 120.1 ATIS: 128.8 UNATTENDED: 121.2



Minimum Sector Altitude 25 NM RO



Changes from 10 NOV 16: Obstacle added.

MISSED APCH: Track 006° to OKERE 4000

DME DIST	10	9	8	7	6	5	4.3	MAP1 1 DME
Advisory Altitude 5.2%	4050	3730	3420	3100	2780	2460	MDA	MDA
Category	A		B			C		D
Circling *	NA						2240(1302) - 3700	NA

* Circling NA South East of RWY 18/36. CGL required for night operations landing RWY 36 and take-off RWY 18. Warning: RWY 36 PAPI - use prohibited beyond 3 DME due to obstacle clearance infringement.

Effective: 30 MAR 17