

ELEV 938

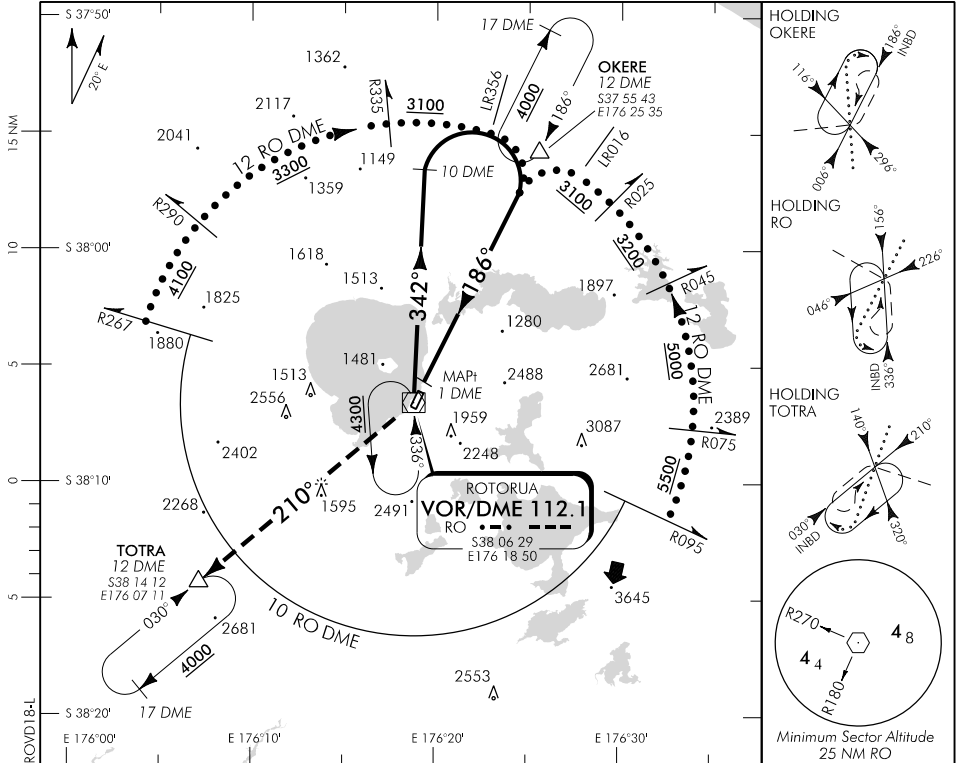
CAT A,B,C

ROTORUA

RWY 18 THR ELEV 935

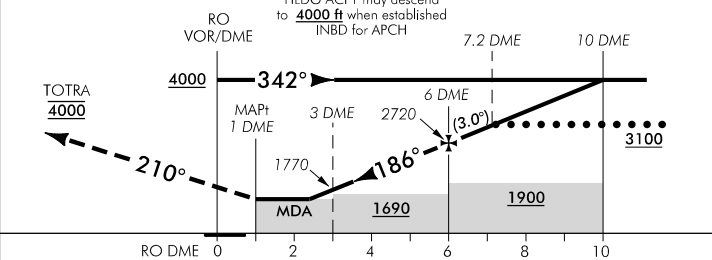
VOR/DME RWY 18

CHRISTCHURCH CONTROL: 119.5 123.8 TOWER: 121.2 120.1 ATIS: 128.8 UNATTENDED: 121.2

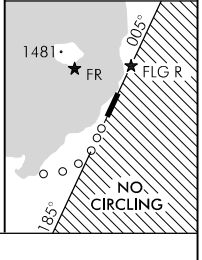


Use Rotorua QNH

HLDG ACFT may descend to **4000 ft** when established INBD for APCH



ROTORUA CGL



MISSED APCH: Track 210° to TOTRA **4000**

DME DIST	MAPf 1	2.4	3	4	5	6	7	8	9	10	11	12
Advisory Alt 5.2%	MDA	MDA	1770	2090	2400	2720	3040	3360	3680	4000	4310	4630
Category		A			B			C			D	
VOR/DME		1590(652) - 2100						1590(652) - 3200			NA	
Circling *		1590(652) - 2100			1880(942) - 2800			2240(1302) - 3700				

* Circling NA South East of RWY 18/36. CGL required for night operations landing RWY 36 and take-off RWY 18

Base turn DCT entry limited to between 306° to 336°

Warning: RWY 36 PAPI - use prohibited beyond 3 DME due to obstacle clearance infringement

Effective: 30 MAR 17

Changes from 10 NOV 16: Obstacle added.

ELEV 938

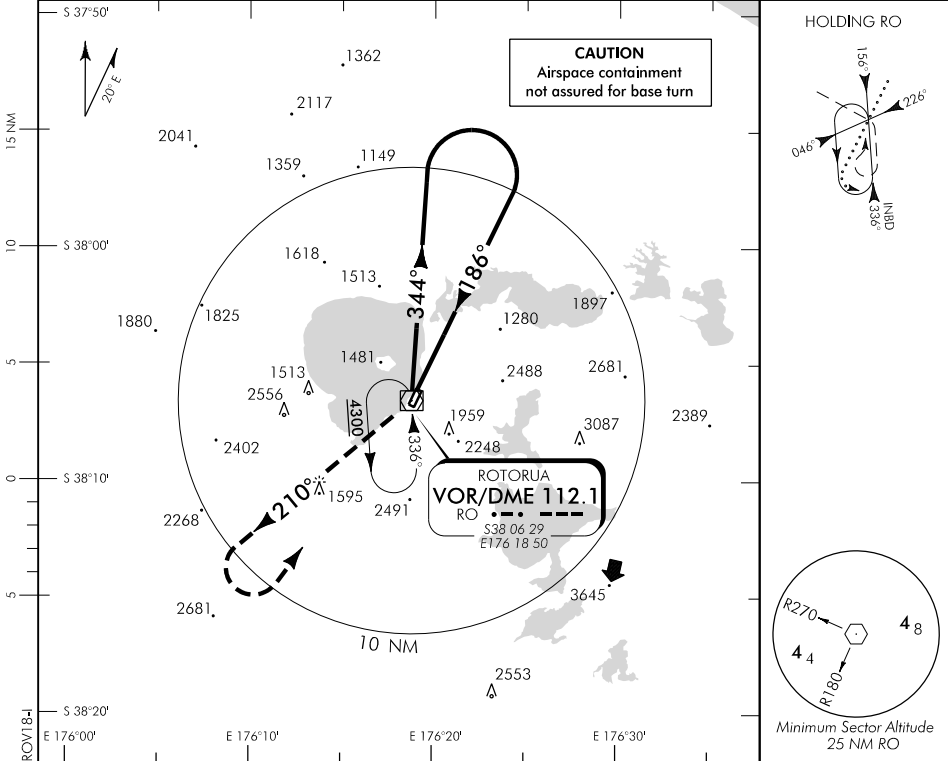
CAT A,B,C

ROTORUA

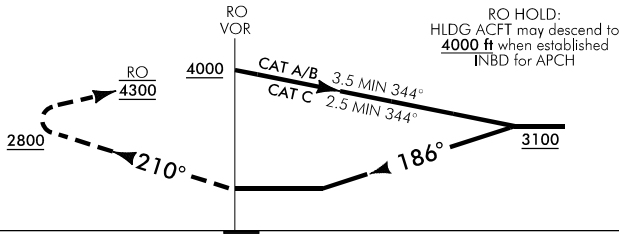
RWY 18 THR ELEV 935

VOR RWY 18

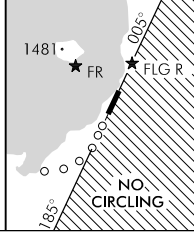
CHRISTCHURCH CONTROL: 119.5 123.8 TOWER: 121.2 120.1 ATIS: 128.8 UNATTENDED: 121.2



Use Rotorua QNH



ROTORUA CGL



Changes from 10 NOV 16: Obstacle added.

MISSED APCH: Track 210° from RO VOR to 2800, turn LEFT to RO VOR 4300

Category	A	B	C	D
VOR	1700(762) – 2600		1700(762) – 4000	NA
Circling *	1700(762) – 2600	1880(942) – 2800	2240(1302) – 4000	

* Circling NA South East of RWY 18/36. CGL required for night operations landing RWY 36 and take-off RWY 18

Base turn DCT entry limited to between 314° and 344°

Warning: RWY 36 PAPI - use prohibited beyond 3 DME due to obstacle clearance infringement

Effective: 30 MAR 17