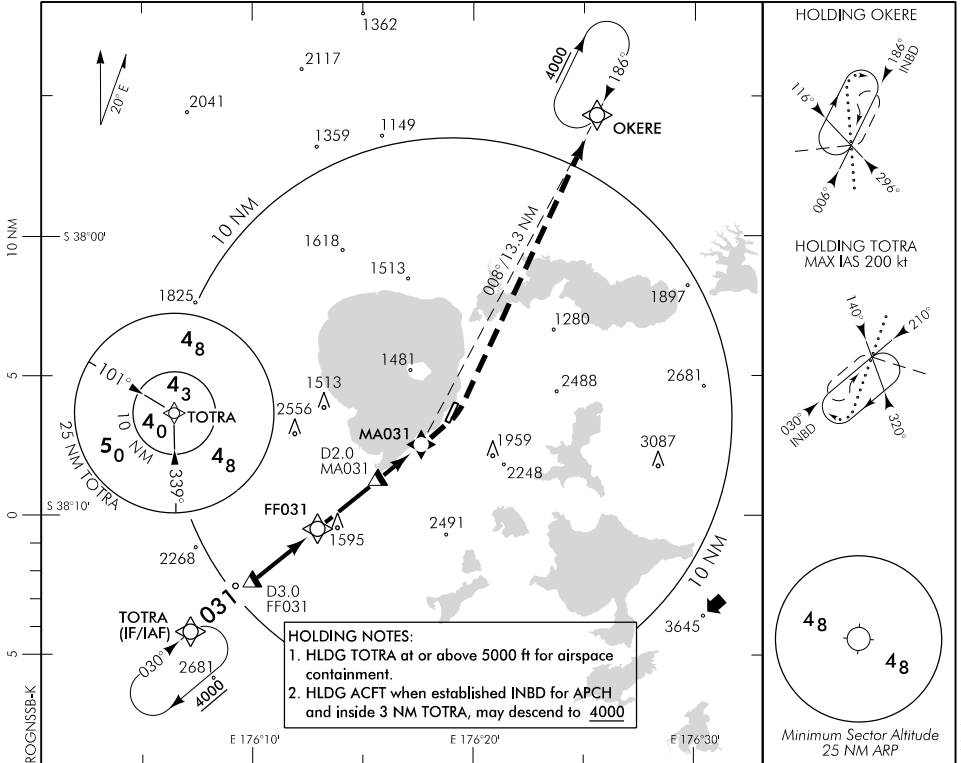


ELEV 938

CAT A,B,C

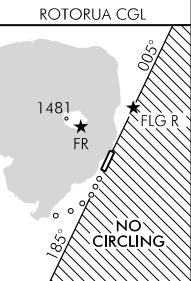
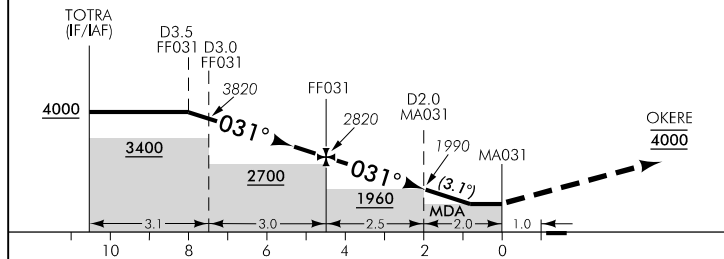
ROTORUA
RNAV (GNSS) B

CHRISTCHURCH CONTROL: 119.5 123.8 TOWER: 121.2 120.1 ATIS: 128.8 UNATTENDED: 121.2



HOLDING NOTES:
1. HLDG TOTRA at or above 5000 ft for airspace containment.
2. HLDG ACFT when established INBD for APCH and inside 3 NM TOTRA, may descend to 4000

Use Rotorua QNH



MISSED APCH: Turn left, direct to OKERE 4000

DISTANCE TO WPT	TOTRA	6	5	4	3	2	1	FF031	4	3	2	1	0.9	MA031
Advisory Altitude 3.1°	4860	4820	4490	4150	3820	3490	3160	2820	2660	2320	1990	1660	MDA	MDA
Category	A			B			C			D				
Circling *	1640(702) – 1900			1880(942) – 2800			2240(1302) – 3700			NA				

* Circling NA south east of RWY 18/36. CGL required for night operations landing RWY 36 and take off RWY 18

Warning: RWY 36 PAPI - use prohibited beyond 3 DME due to obstacle clearance infringement

Effective: 30 MAR 17

Changes from 10 NOV 16: Obstacle added.

ELEV 938

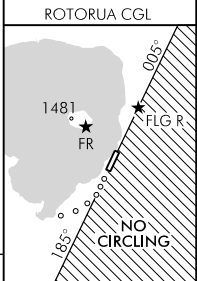
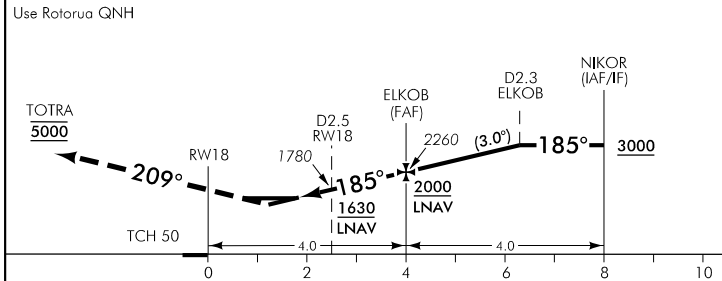
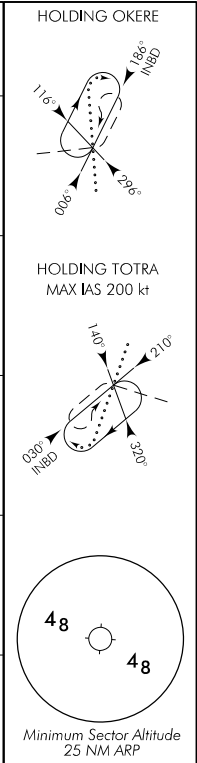
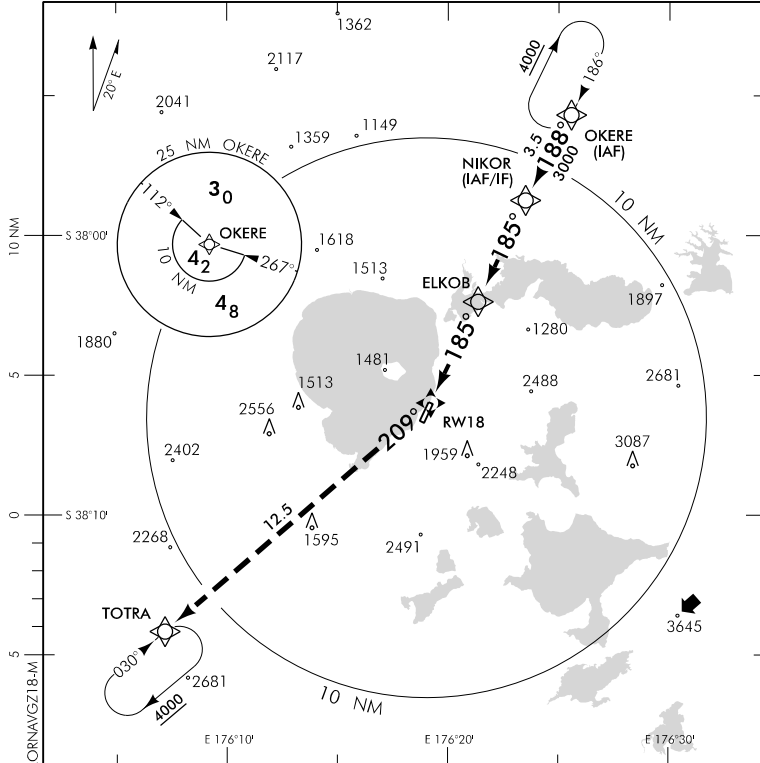
CAT A,B,C

ROTORUA

RWY 18 THR ELEV 935

RNAV (GNSS) Z RWY 18

CHRISTCHURCH CONTROL: 119.5 123.8 TOWER: 121.2 120.1 ATIS: 128.8 UNATTENDED: 121.2



MISSED APCH: MAX IAS 200 kt until turn complete. Turn RIGHT track 209° to TOTRA 5000

DISTANCE to WPT	MAPt	1.4	1.7	2	3	ELKOB	1	2	3	NIKOR
Advisory Altitude 3.0°	DA/MDA	DA	MDA	1620	1940	2260	2580	2900	3210	3530
Category	A		B			C			D	
LNAV/VNAV *	1430(495) – 1600					1430(495) – 2400				
LNAV	1540(602) – 2100					1540(602) – 3200				
Circling #	1550(612) – 2100		1880(942) – 2800			2240(1302) – 3700				

* Valid to AD temperature -5°C. Use of remote QNH NA.
 # Circling NA south east of RWY 18/36. CGL required for night operations landing RWY 36 and take-off RWY 18.
 WARNING: RWY 36 PAPI – use prohibited beyond 3 DME due to obstacle clearance infringement.

Changes from 10 NOV 16: Obstacle added.

Effective: 30 MAR 17