

ELEV 938

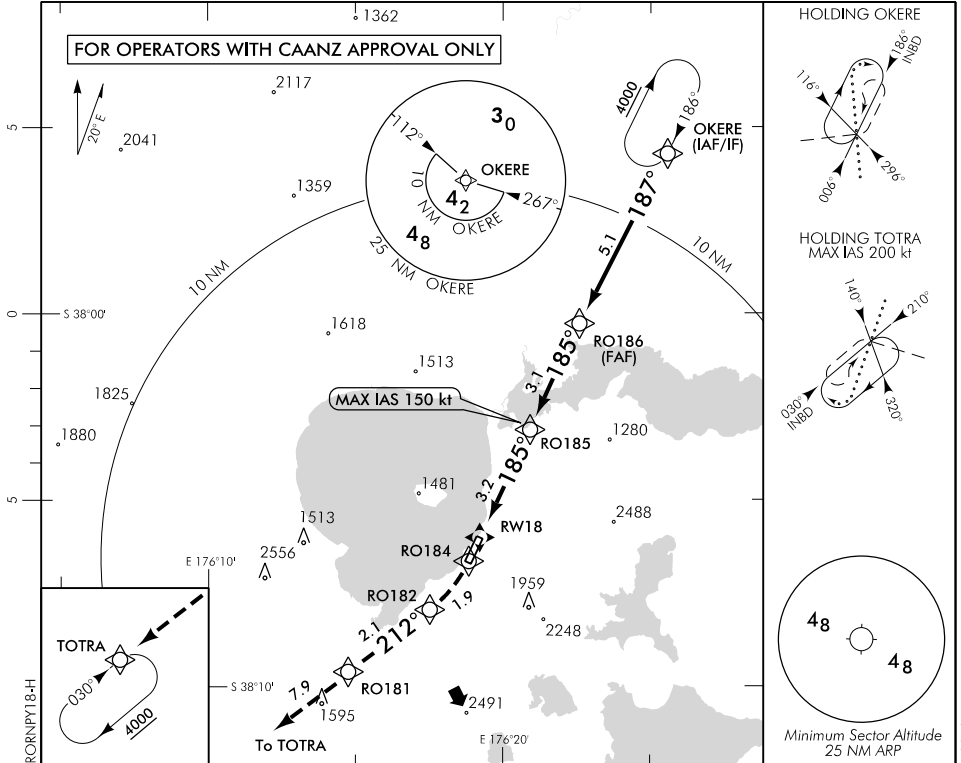
CAT C

ROTORUA

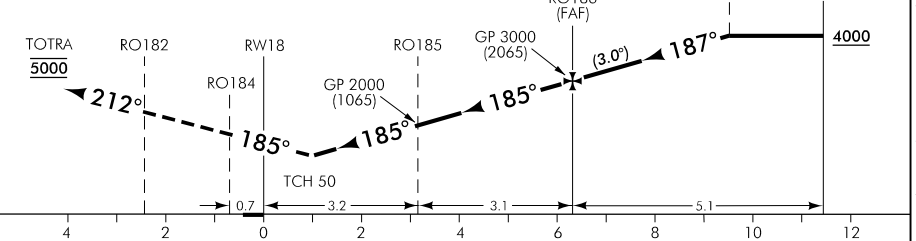
RWY 18 THR ELEV 935

RNAV (RNP) Y RWY 18

CHRISTCHURCH CONTROL: 119.5 123.8 ATIS: 128.8 TOWER: 121.2 120.1 UNATTENDED: 121.2



Use Rotorua QNH only. Procedure NA when aerodrome temperature is below -10°C or above 47°C



MISSED APCH: MAX IAS 200 kt to RO182. Track 185° to RO184, RIGHT turn, track 212° to TOTRA 5000

Category	A	B	C	D
RNP 0.10*			1325(390) – 1600	
RNP 0.16	NA	NA	1473(538) – 1800	NA
RNP 0.30*			1464(529) – 1800	

Final APCH MAX IAS 150 kt from RO185

RNP 1 Initial, RNP 0.33 missed APCH segment to RO181

* Requires capability to achieve up to 15° bank angle below 400 ft radio altitude

RF required

Transition to missed APCH RNP for lateral guidance must not be initiated prior to the along-track position of DA/H

Effective: 30 MAR 17

Changes from 10 NOV 16: Obstacle added.

ELEV 938

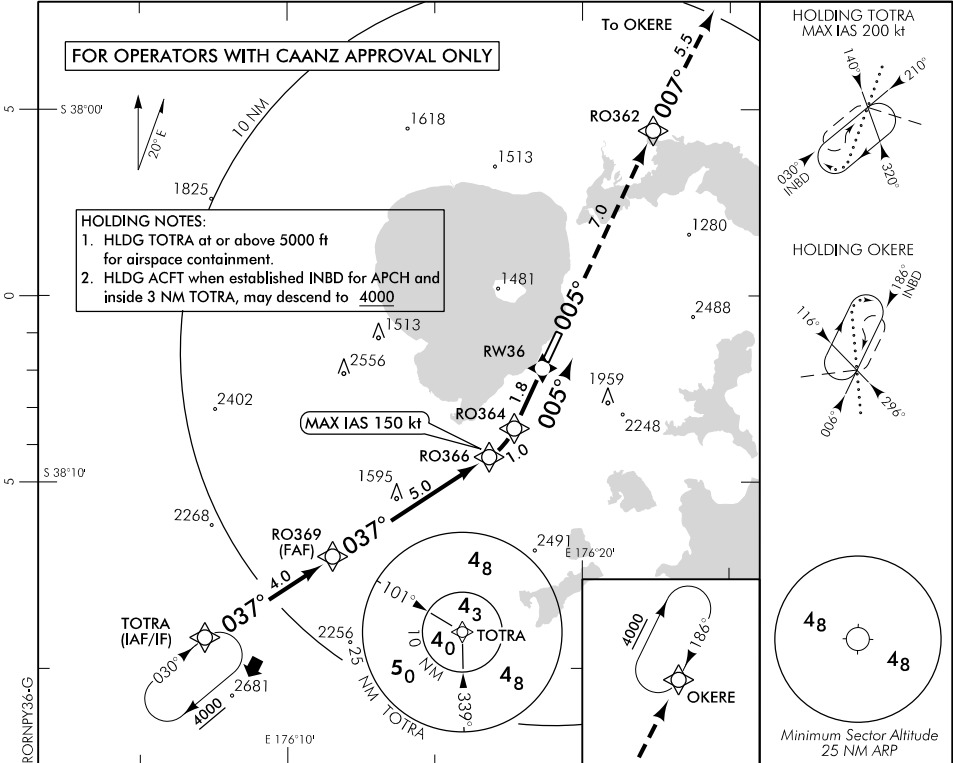
CAT C

ROTORUA

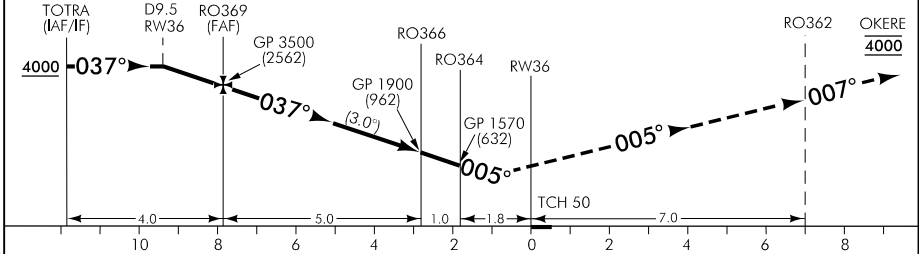
RWY 36 THR ELEV 938

RNAV (RNP) Y RWY 36

CHRISTCHURCH CONTROL: 119.5 123.8 ATIS: 128.8 TOWER: 121.2 120.1 UNATTENDED: 121.2



Use Rotorua QNH only. Procedure NA when aerodrome temperature is below -10°C or above 47°C



MISSED APCH: Track 005° to RO362, track 007° to OKERE **4000**

Category	A	B	C	D
RNP 0.10			1238(300) – 1600	
RNP 0.11	NA	NA	1332(394) – 1600	NA
RNP 0.16*			1332(394) – 1600	

Final APCH MAX IAS 150 kt from RO366
RNP 1 Initial and missed APCH segments
 * Requires capability to achieve up to 20° bank angle below 400 ft radio altitude
 RF required

Changes from 10 NOV 16: Obstacle added.

Effective: 30 MAR 17