

ELEV 938

ROTORUA

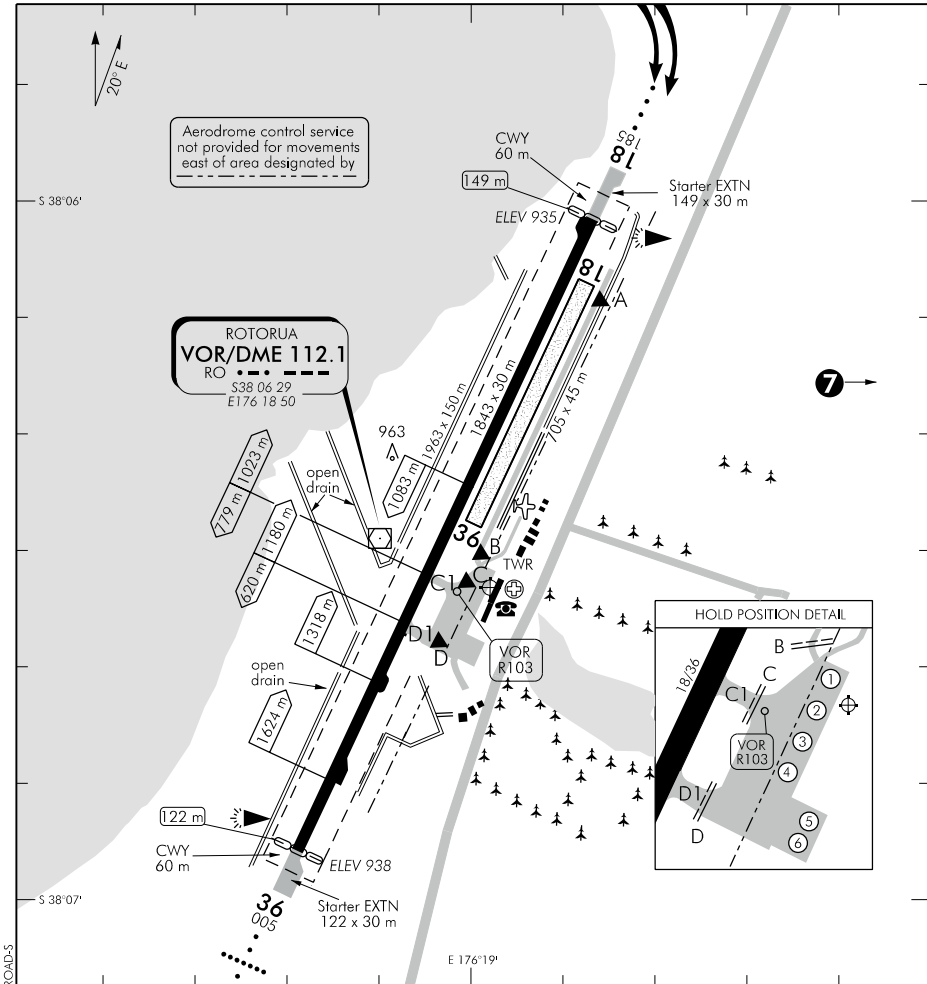
NZRO

AERODROME (1)

TOWER: 121.2 120.1

ATIS: 128.8

UNATTENDED: 121.2



1. Circuit: RWY 36 — Left hand RWY 18 — Right hand
When ATC is on watch, unless otherwise instructed, circuit altitude is 2000 ft AMSL.
2. Aircraft are not to commence taxiing from the apron to the sealed RWY while operations are occurring on Grass RWY 18/36, without clearance from ATC.
3. Simultaneous operations on parallel paved and grass runways prohibited. Aircraft are not to enter the grass runway while an aircraft is taking off or landing on the parallel paved runway.
4. Tail skid aircraft prohibited on sealed runway.
5. Use of TWY C1 by ACFT longer than 32.5 m or heavier than 63.3 tonnes is prohibited.
6. Gliding operations may take place particularly during weekends and public holidays.

WARNING RWY 36 PAPI use prohibited beyond 3 DME due to obstacle clearance infringement

(continued)

S 38 06 33 E 176 19 02

Effective: 4 FEB 16

© Civil Aviation Authority

ROTORUA
AERODROME (1)

Changes from 2 APR 15: Holding point ECHO removed.

ROTORUA
AERODROME (2)

- 7 **CAUTION:** Tarawera MBZ east of Rotorua CTR/D H24 SFC – LL CA. Aircraft in MBZ will be on 120.9 MHz.
- 8. **CAUTION:**
 - Bird hazard. Ducks, plovers and swans frequently present.
 - Downdrafts and turbulence can be expected on final for RWY 18 in SE wind conditions.
- 9. During ATS hours of service aircraft crossing the apron are requested to contact TOWER on 121.2 MHz or by phone prior to crossing.
- 10. RWY 18/36 grass soft when wet. Available for use only with ATC clearances.
- 11. Light aircraft parking area available north of control tower.
- 12. Hand held high powered laser being used for bird control during RFS operational hours.