

ELEV 938

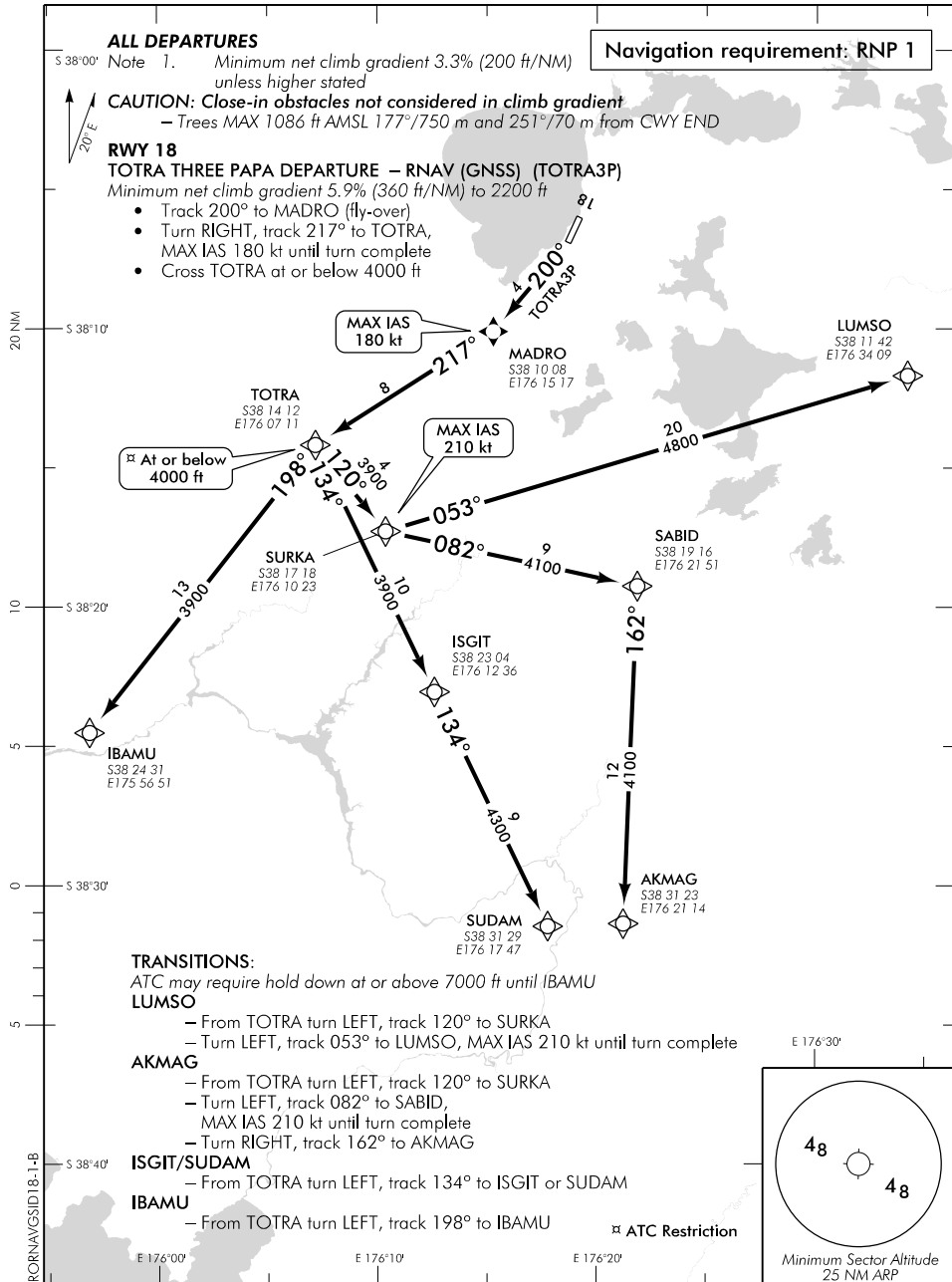
CAT A,B,C

ROTORUA

NZRO

RNAV (GNSS) SID RWY 18 (1)

CHRISTCHURCH CONTROL: 119.5 123.8 TOWER: 121.2 120.1 ATIS: 128.8 UNATTENDED: 121.2



Changes from 10 NOV 16: SID MSA added.

Effective: 25 MAY 17

ELEV 938

CAT A,B,C

ROTORUA

NZRO

RNAV (GNSS) SID RWY 18 (2)

CHRISTCHURCH CONTROL: 119.5 123.8 TOWER: 121.2 120.1 ATIS: 128.8 UNATTENDED: 121.2

Navigation requirement: RNP 1

ALL DEPARTURES

Note 1. Minimum net climb gradient 3.3% (200 ft/NM) unless higher stated
CAUTION: Close-in obstacles not considered in climb gradient
- Trees MAX 1086 ft AMSL 177°/750 m and 251°/70 m from CWY END

RWY 18

ORAKA TWO PAPA DEPARTURE – RNAV (GNSS) (ORAKA2P)

Minimum net climb gradient 5.9% (360 ft/NM) to 2200 ft

- Track 200° to MADRO (fly-over)
- Turn RIGHT, track 217° to TOTRA, MAX IAS 180 kt until turn complete
- Cross TOTRA at or below 4000 ft
- Turn RIGHT, track 300° to ORAKA, MAX IAS 220 kt until turn complete

TRANSITIONS:

ATC may require hold down
- At or above 5000 ft until FALLS
- At or above 4000 ft until GOBUK

FALLS

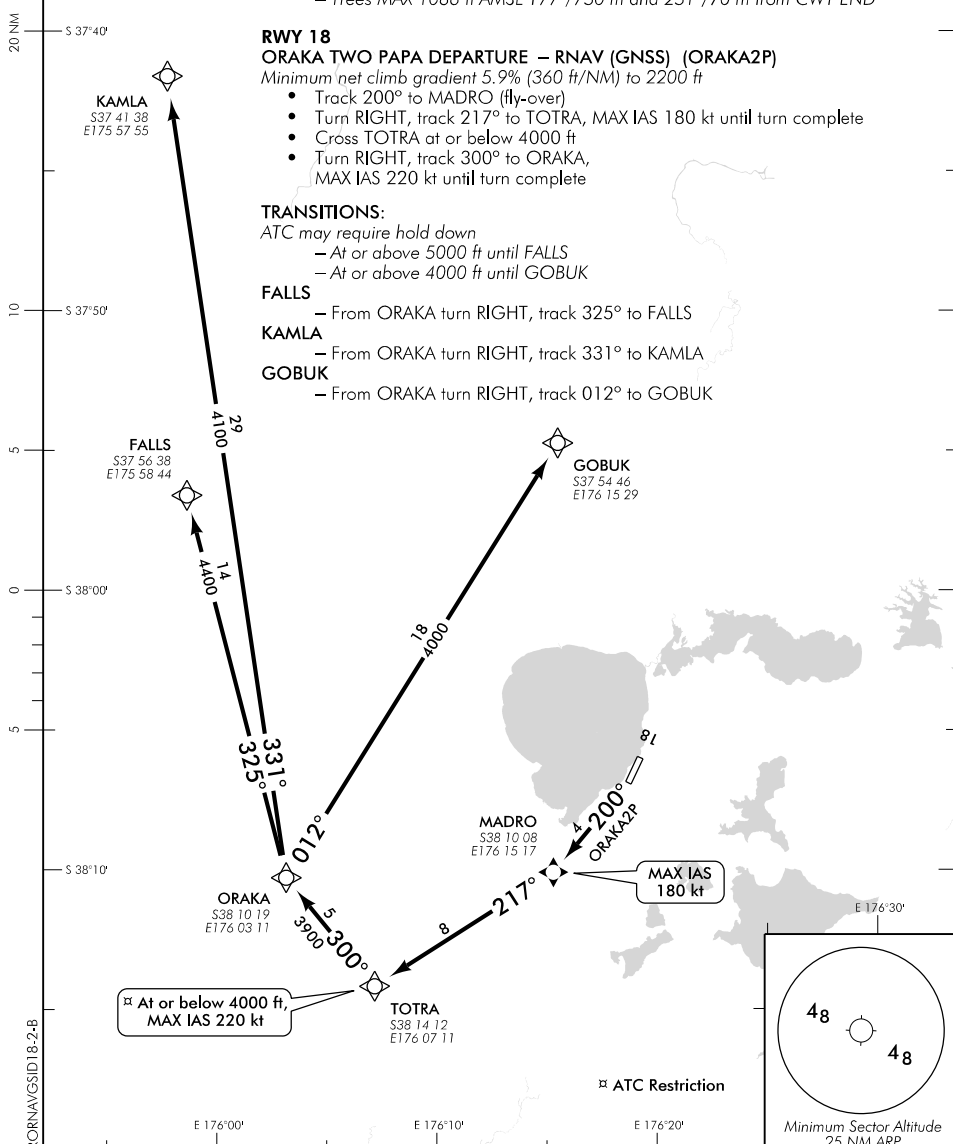
- From ORAKA turn RIGHT, track 325° to FALLS

KAMLA

- From ORAKA turn RIGHT, track 331° to KAMLA

GOBUK

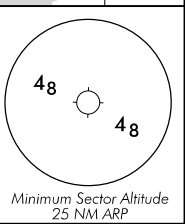
- From ORAKA turn RIGHT, track 012° to GOBUK



Changes from 10 NOV 16: SID MSA added.

At or below 4000 ft, MAX IAS 220 kt

MAX IAS 180 kt



ATC Restriction

Effective: 25 MAY 17

© Civil Aviation Authority