

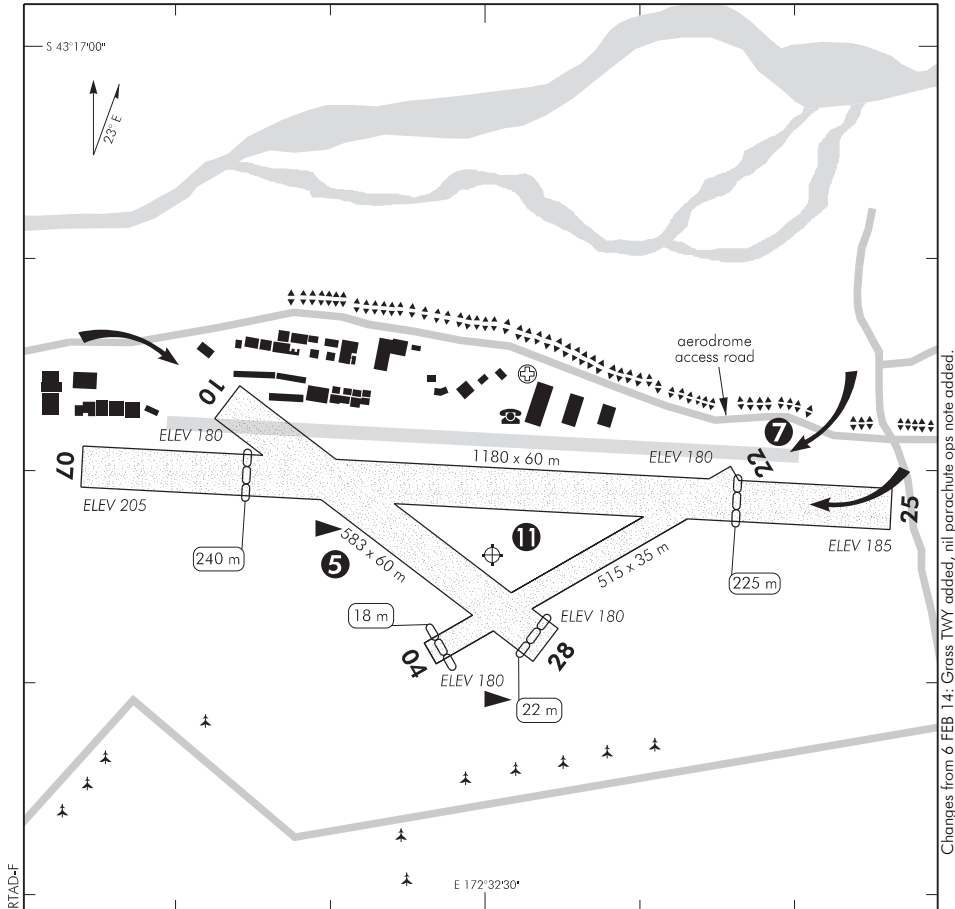
ELEV 180

NZRT

NON-CERTIFICATED

**RANGIORA
AERODROME**

UNATTENDED: 120.2



1. Circuit: RWY 04, 07, 28 — Left hand
RWY 10, 22, 25 — Right hand
2. Low speed microlight aircraft should circuit at 500 ft AGL.
3. Turn left after landing.
4. Some patches of loose stones on movement areas.
5. Helicopter hover training area.
6. Standard overhead join recommended.
7. RWY 04/22 not available when road traffic is using aerodrome access road.
8. **CAUTION:** Two private airfields in close proximity 1.8 NM SW, Fernside Fields (circuits to the north), Barradale (circuits to the south).
9. Helicopters may join and depart at low level but must come to a stationary hover to check for traffic prior to crossing active vector.
10. Make radio call on final approach advising intended runway.
11. Triangular area between runways reserved for helicopter auto-rotation training. Keep clear.
12. No parachute operations permitted.

S 43 17 24 E 172 32 30*

Effective: 2 FEB 17

© Civil Aviation Authority

**RANGIORA
AERODROME**

Changes from 6 FEB 14: Grass TWY added, nil parachute ops note added.

NZRT

RWY

RWY	SFC	Strength	Gp	Slope	ASDA	Take-off distance			LDG DIST
						1:20	1:30	1:40	
04 22	Gr	ESWL 820	4	Nil		515 497			497 515
07 25	Gr	ESWL 820	8	0.52D 0.52U		955 940			940 955
10 28	Gr	ESWL 820	5	Nil		561 583			583 561

LIGHTING

Nil

FACILITIES

Fuel: BP Jet A1, Avgas 100, Swipecard.

Z Energy Avgas 100, access via Z card.

Limited repairs.

SUPPLEMENTARYOperator: Waimakariri District Council, Private Bag 1005, Rangiora.
Tel (03) 313 6136 Fax (03) 313 4432

Available for general use without the permission of the operator.

Landing fees payable. Honesty boxes adjacent to fuel pumps and Recreational Aircraft Club.
Refer www.waimakariri.govt.nz for current rates.

Aerodrome landing charges will be invoiced to the registered aircraft owner as per the Civil Aviation Register of Aircraft, unless prior arrangement has been made with the aerodrome operator. Invoices will incur an administrative charge.