

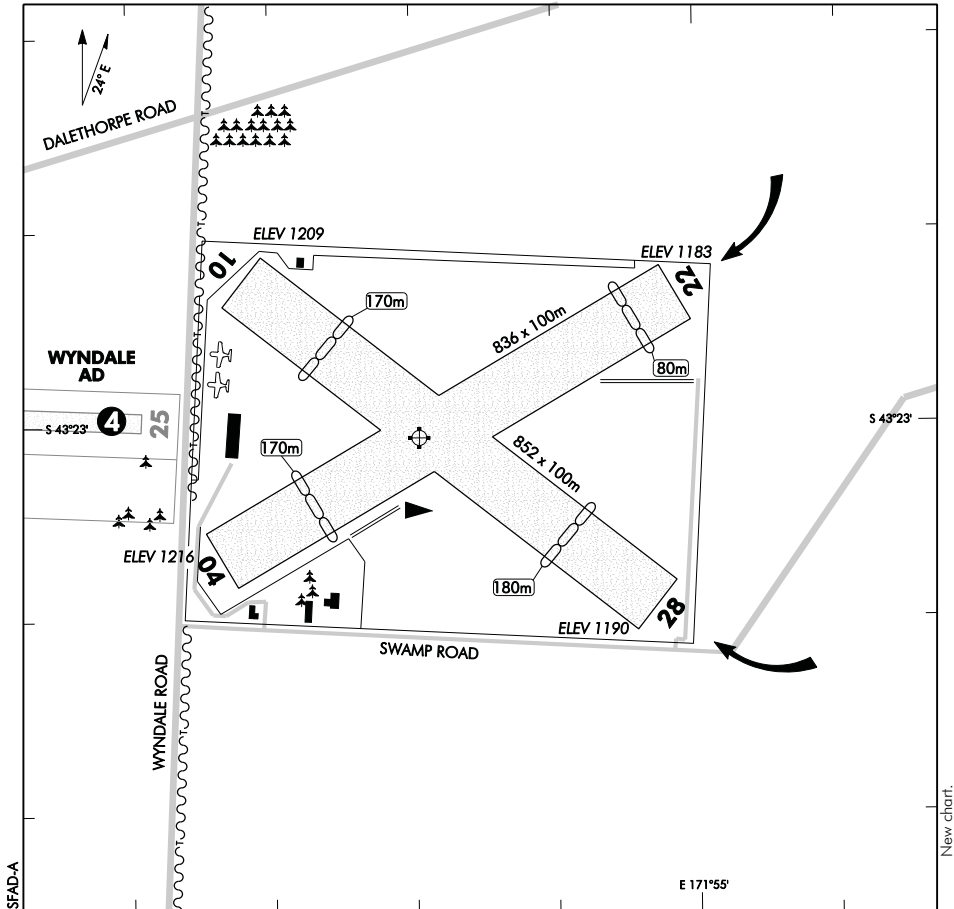
ELEV 1216

NZSF

NON-CERTIFICATED

**SPRINGFIELD
AERODROME**

UNATTENDED: 133.55



1. Circuit: RWY 04/10 — Left hand
RWY 22/28 — Right hand
2. **CAUTION:** Winch launching of gliders with wire launches up to 2000 ft AGL.
3. Rising ground 0.7 NM from aerodrome to NW, SW and S.
4. **CAUTION:** Wyndale AD adjacent to west. Possible concurrent activity.
5. Noise abatement — power aircraft operations are limited to aircraft in direct support of the gliding operation. Power aircraft should avoid low level circuits and make minimum power approaches where possible.
6. **CAUTION:** Powerlines on Wyndale Rd near RWY 10 THR.

S 43 23 01 E 171 54 40*

Effective: 26 JUL 12

© Civil Aviation Authority

**SPRINGFIELD
AERODROME**

**SPRINGFIELD
OPERATIONAL DATA**

NZSF

RWY

RWY	SFC	Strength	Gp	Slope	ASDA	Take-off distance			LDG DIST
						1:20	1:30	1:40	
04	Gr		5 3	1.20D		756			666
22	Gr		3 5	1.20U		666			756
10	Gr		4	0.68D		672			682
28	Gr		4	0.68U		682			672

LIGHTING

Nil

FACILITIES

Telephone at clubhouse

Aircraft/glider tie-down area west of hangar

SUPPLEMENTARY

Operator: Warwick Bethwaite Tel 027 374 1059

Contact: CFI — Warwick Bethwaite Tel 027 374 1059

Available for use by Canterbury Gliding Club members.

Itinerant use restricted. Subject to specific prior approval of the operator.