

ELEV 2550

SKYLINE HELIPAD

NZSH

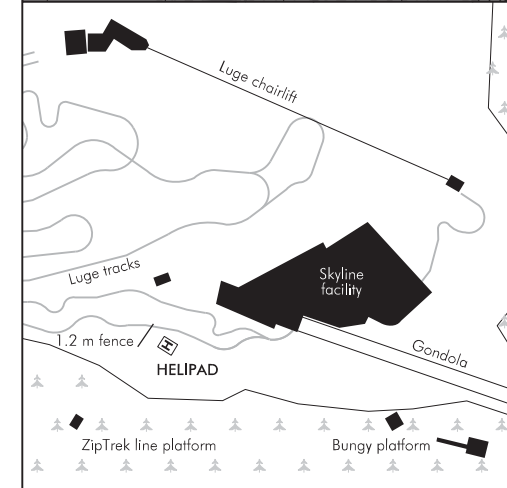
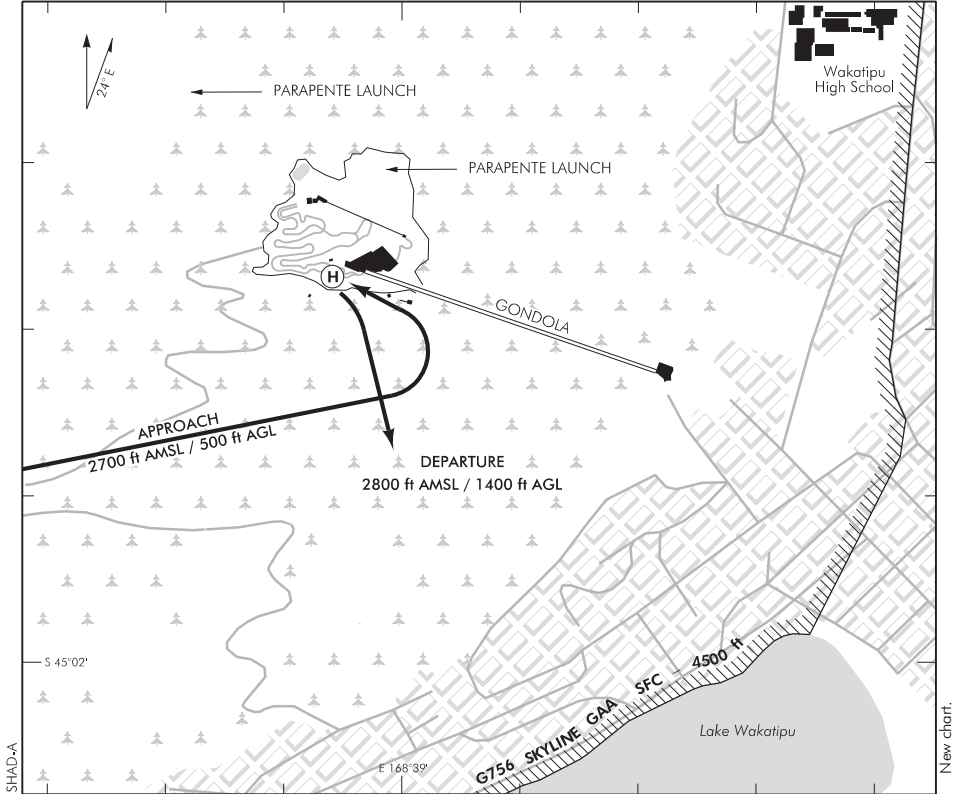
NON-CERTIFICATED

HELIPORT

QUEENSTOWN TOWER: 118.1 128.9

QUEENSTOWN ATIS: 126.4

UNATTENDED: 118.1



1. Heliport located within G756 (Skyline) within Queenstown CTR/C.
2. Clearances from Queenstown TWR required.
3. **CAUTION:** Significant parapente activity around Skyline terminal launching from 2 sites.
4. **CAUTION:** Cableway for gondola NE of approach and departure paths.
5. **CAUTION:** Ziptrek line to SW of and below approach and departure paths.
6. Comply with arrival/departure procedures.

S 45 01 37 E 168 38 54*

Effective: 10 NOV 16

© Civil Aviation Authority

SKYLINE HELIPAD
HELIPORT

FATO/TLOF

	SIZE	SFC	STRENGTH	MARKINGS
FATO	9 m x 5 m	Conc	*	
TLOF	9 m x 5 m	Conc	*	H

* Limited to AS350B2 aircraft

LIGHTING

Nil

FACILITIES

Nil

SUPPLEMENTARY

Operator: The Helicopter Line Ltd
PO Box 1530, Queenstown 9348
Tel (03) 442 3034

Very limited availability strictly subject to prior approval by the operator.

Strict compliance with helipad resource consent conditions and helicopter management plan (available from operator) is mandatory.