

ELEV 13

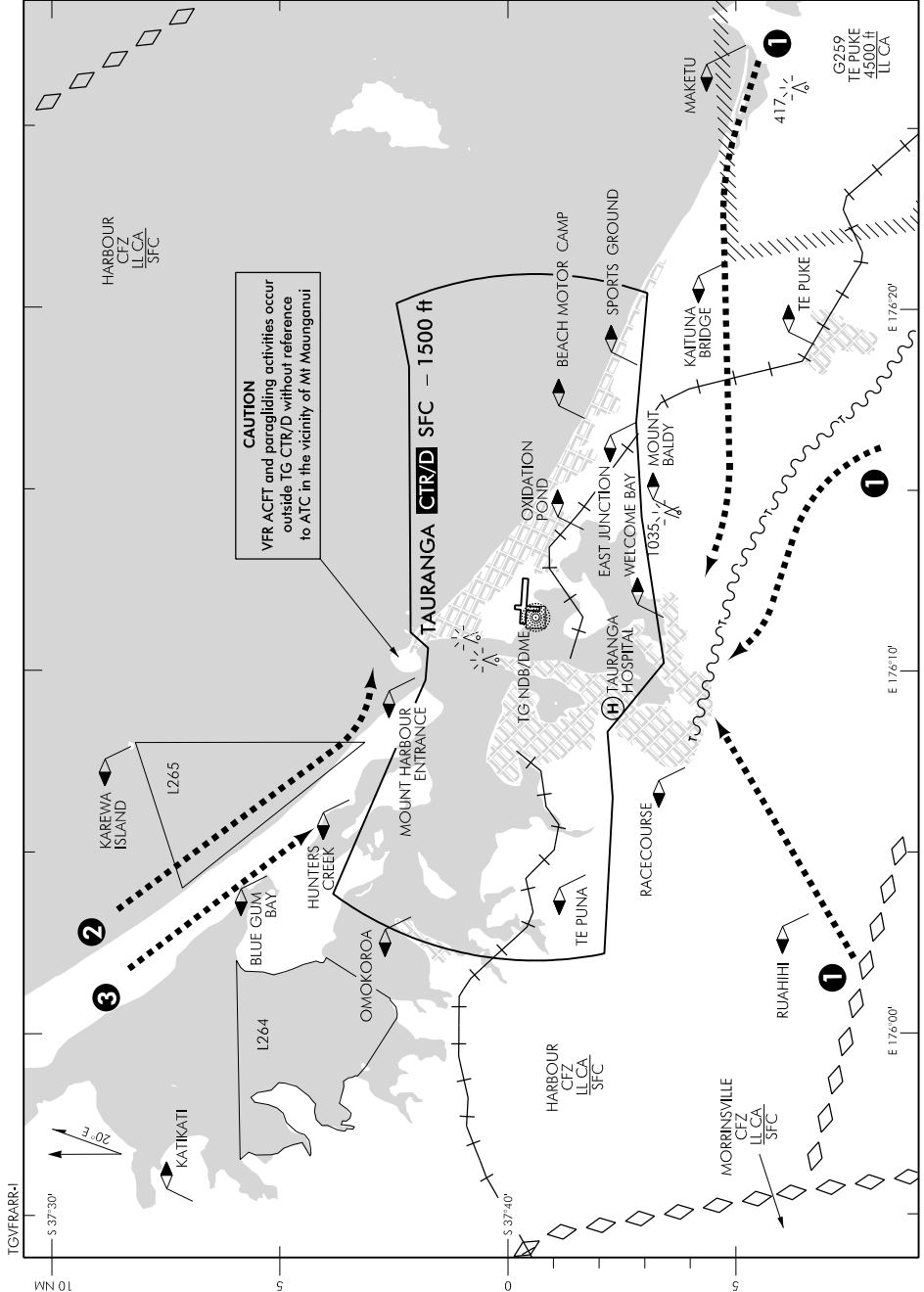
NZTG

TOWER: 118.3 123.4 129.2

TAURANGA

VFR PREFERRED ARRIVAL PROCEDURES (1)

ATIS: 126.6



Changes from 10 NOV 16: L261 amended to L264 with boundary change.

Effective: 9 NOV 17

© Civil Aviation Authority

TAURANGA

VFR PREFERRED ARRIVAL PROCEDURES (1)

ELEV 13

NZTG

TOWER: 118.3 123.4 129.2

TAURANGA**VFR PREFERRED ARRIVAL PROCEDURES (2)**

ATIS: 126.6

For VFR flights entering Tauranga CTR/D and landing at Tauranga**General:**

Listen to ATIS for conditions at Tauranga aerodrome.

If clearance is not available remain outside Tauranga CTR/D.

Aircraft entering CTR from the north and west — caution low flying zones L264 and L265.

Extensive VFR operations may take place in uncontrolled airspace adjacent to the Tauranga CTR/D.

Preferred VFR arrival tracking outside controlled airspace; refer to diagram on previous page and visual navigation charts.

- ❶ From the south and east Track south of Welcome Bay. Contact TG TWR 1 NM south of Welcome Bay for clearance to enter the CTR.
- ❷ From the northwest (RWY 25) Track seawards of the Matakana coastline. Contact TG TWR 1 NM north of the Mount Harbour Entrance for clearance to enter the CTR.
- ❸ From the northwest (RWY 07) Track via Blue Gum Bay to Hunters Creek. Contact TG TWR north of Hunters Creek for clearance to enter the CTR.

Communications Failure

Outside Tauranga CTR/D — Remain clear and proceed to alternative aerodrome.

Squawk 7600.

Within Tauranga CTR/D — If circuit joining instructions have been issued, follow assigned clearance, **Squawk 7600**, look for light signals.

If circuit joining instructions have not been issued, leave CTR/D via reversal of clearance or instructions, **Squawk 7600**.

Proceed to alternative aerodrome. If unable **Squawk 7700**.