

ELEV 13

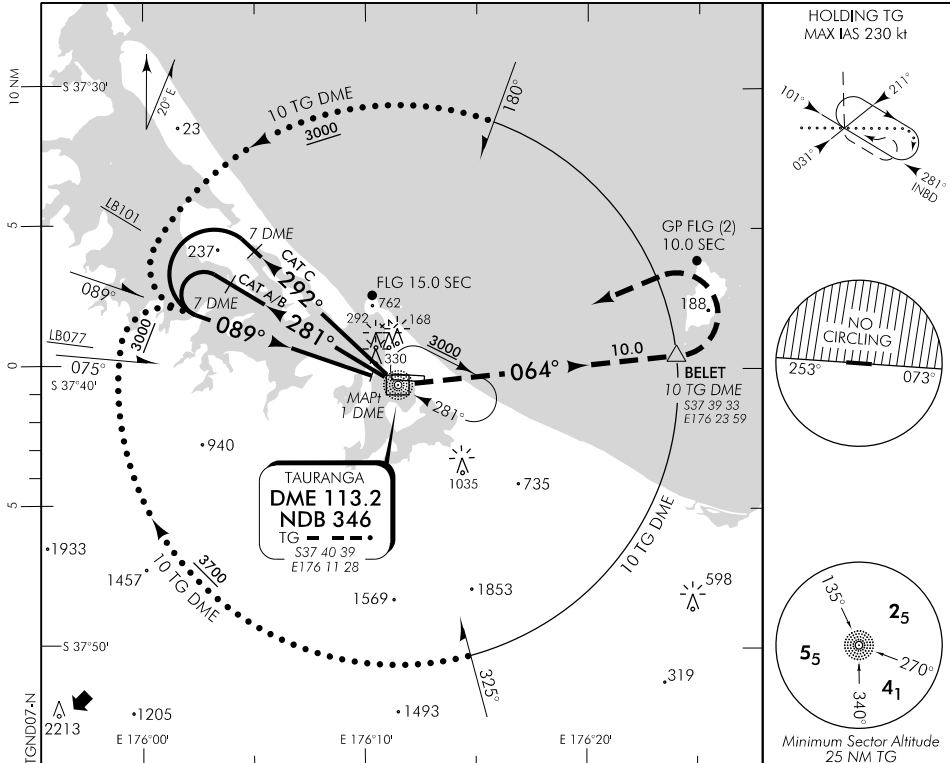
CAT A,B,C

**TAURANGA**

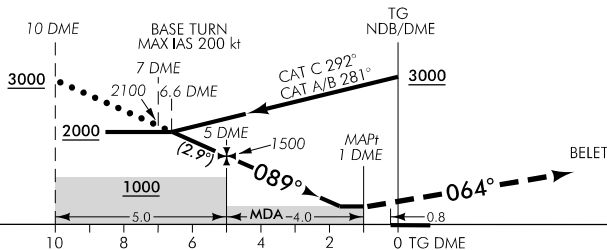
RWY 07 THR ELEV 13

**NDB/DME RWY 07**

CHRISTCHURCH CONTROL: 123.8 119.5 TOWER: 118.3 123.4 129.2 ATIS: 126.6 UNATTENDED: 118.3



Use Tauranga QNH



**MISSED APCH:** Track 089° to TG NDB, turn LEFT track 064° to BELET, turn LEFT direct to TG NDB 3000

TG DME DIST	10	9	8	7	6	5	4	3	2	1.8	MAPt 1
Advisory Altitude 5%	3000	2700	2400	2100	1800	1500	1200	900	600	MDA	MDA
Category	A			B			C		D		
NDB/DME	580(567) - 1600						580(567) - 2800			NA	
Circling *	580(567) - 1900			800(787) - 2800			1430(1417) - 3700			NA	

\*Circling NA north of RWY 07/25. CAT C circling area not fully contained within controlled airspace.

Changes from 10 NOV 16: Obstacles added, minima, CAT A/B base turn track, TG holding, MINM SECT ALT 25 NM, No circling area, OCA.

**Effective: 30 MAR 17**

ELEV 13

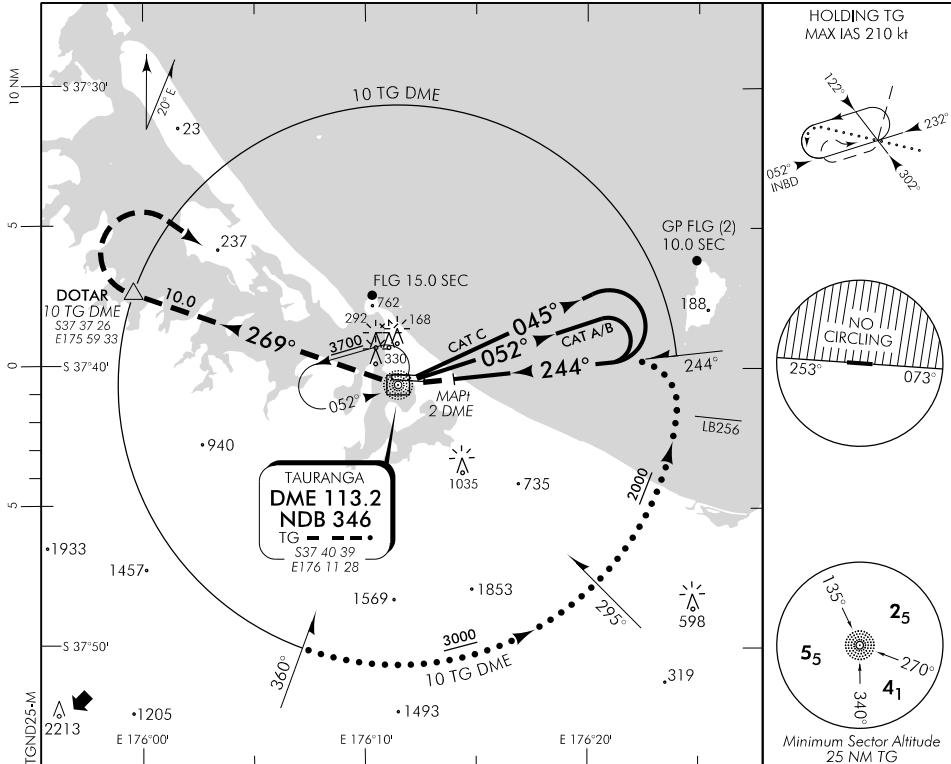
CAT A,B,C

# TAURANGA

RWY 25 THR ELEV 13

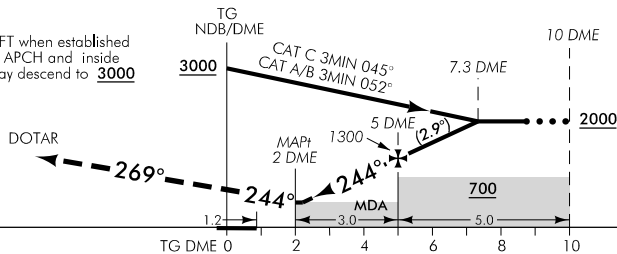
**NDB/DME RWY 25**

CHRISTCHURCH CONTROL: 123.8 119.5 TOWER: 118.3 123.4 129.2 ATIS: 126.6 UNATTENDED: 118.3



Use Tauranga QNH

HLDG ACFT when established INBD for APCH and inside 10 DME may descend to **3000**



**MISSED APCH:** Track 244° to TG NDB, turn RIGHT track 269° to DOTAR, turn RIGHT direct to TG NDB **3700**

DME DIST	MAPt 2	2.2	3	4	5	6	7	7.3
Advisory Altitude 5%	MDA	MDA	700	1000	1300	1600	1900	2000
Category	A		B		C		D	
NDB/DME	480(467) - 1600				480(467) - 2400			
Circling *	560(547) - 1900		800(787) - 2800		1430(1417) - 3700		NA	

\*Circling NA north of RWY 07/25. CAT C circling area not fully contained within controlled airspace.

Changes from 10 NOV 16: Obstacles added, minima, MNM SECT ALT 25 NM, No circling area, OCA.