

ELEV 13

CAT A,B,C

**TAURANGA**

RWY 07 THR ELEV 13

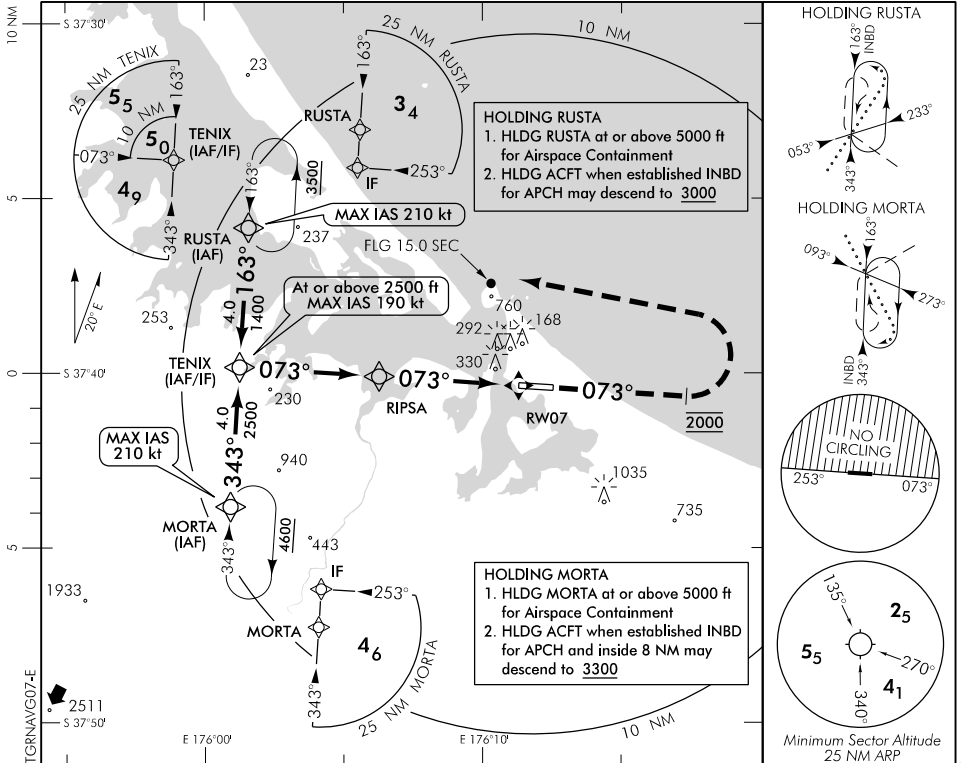
**RNAV (GNSS) RWY 07**

BAY APPROACH: 123.8 119.5

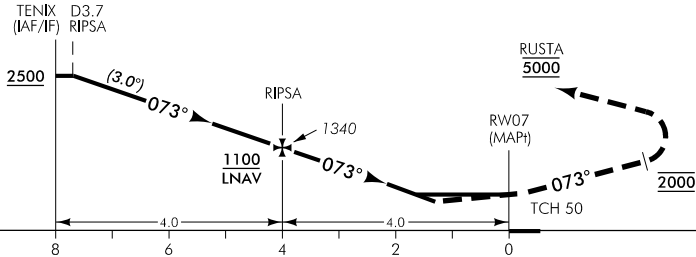
TOWER: 118.3 123.4 129.2

ATIS: 126.6

UNATTENDED: 118.3



Use Tauranga QNH



**MISSED APCH:** MAX IAS 180 kt until turn complete. Track 073° to 2000, turn LEFT direct to RUSTA 5000

DISTANCE TO WPT	TENIX	3	2	1	RIPSA	3	2	1.6	1.3	RW07
Advisory Altitude 3°	2610	2290	1970	1660	1340	1020	700	MDA	DA	MDA
Category	A			B		C			D	
LNAV/VNAV *	490(477) - 1600					490(477) - 2400				
LNAV	580(567) - 1600					580(567) - 2800				
Circling #	580(567) - 1900			800(787) - 2800		1430(1417) - 3700			NA	

\* Valid to AD temperature -5°C. Use of remote QNH NA  
 # Circling NA north of RWY 07/25. CAT C circling airspace containment not assured.

**Effective: 29 MAR 18**

Changes from 1 FEB 18: MORTA hold correction.

ELEV 13

CAT A,B,C

# TAURANGA

RWY 25 THR ELEV 13

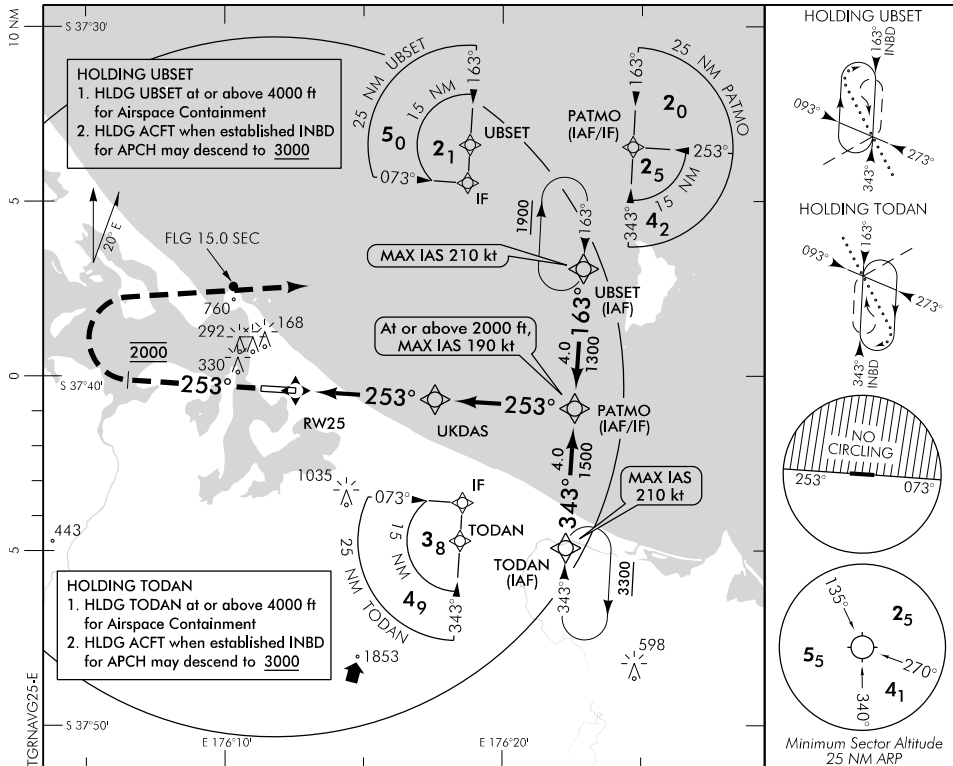
## RNAV (GNSS) RWY 25

BAY APPROACH: 123.8 119.5

TOWER: 118.3 123.4 129.2

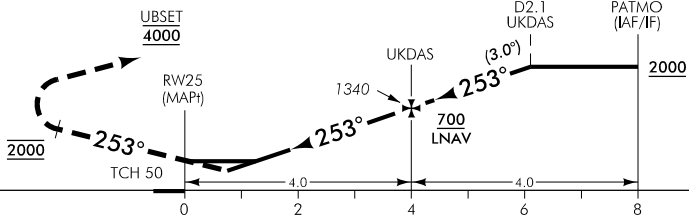
ATIS: 126.6

UNATTENDED: 118.3



Changes from 1 FEB 18: TODAN TAA 25 NM label correction.

Use Tauranga QNH



**MISSED APCH:** MAX IAS 180 kt until turn complete. Track 253° to 2000, turn RIGHT direct to UBSET 4000

DISTANCE to WPT	RW25	0.9	1.2	2	3	UKDAS	1	2	3	PATMO
Advisory Altitude 3°	MDA	DA	MDA	700	1020	1340	1660	1970	2290	2610
Category	A		B			C			D	
RNAV/VNAV *	350(337) - 1500					350(337) - 1600				
RNAV	450(437) - 1500					450(437) - 2000				
Circling #	560(547) - 1900		800(787) - 2800			1430(1417) - 3700				

\* Valid to AD temperature -5°C. Use of remote QNH NA  
 # Circling NA north of RWY 07/25. CAT C circling airspace containment not assured.

**Effective: 29 MAR 18**