

ELEV 11

CAT H

THAMES

NZTH

ARRIVAL/DEPARTURE

CHRISTCHURCH CONTROL: 125.3 123.8

UNATTENDED: 124.5

Arrivals

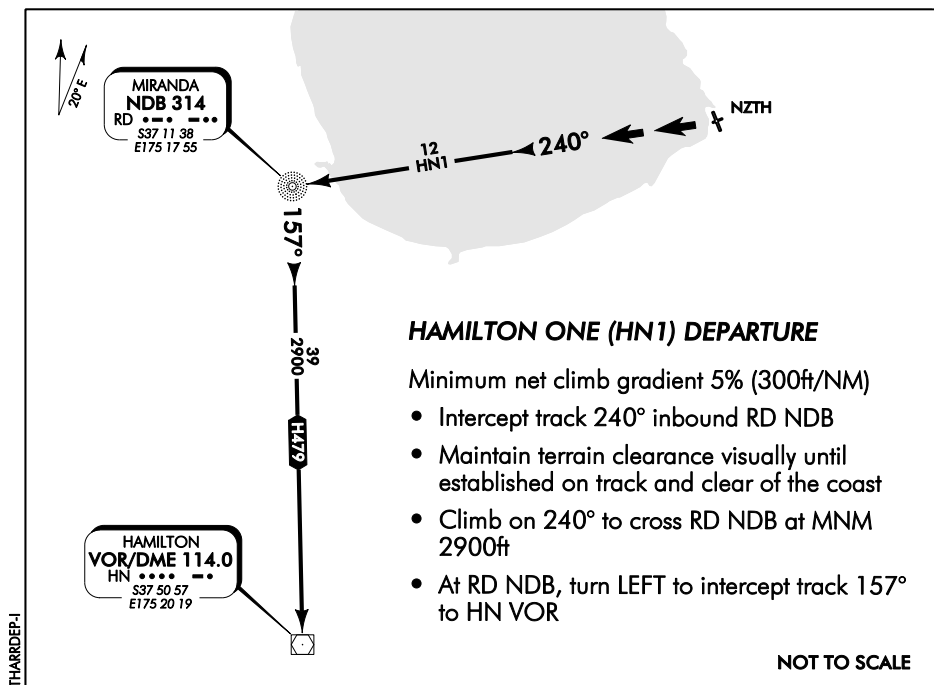
Due to unreliable VHF coverage, call Christchurch Control on 0800 626 756 (landline users only) or 0900 62 675 (cellphone users) for flight plan termination

Departures

Call Christchurch Control on 0800 626 756 (landline users only) or 0900 62 675 (cellphone users) for IFR clearance and flight information

IFR Take-off minima

Day	Night
500 - 1500	NA



FOR WESTPACTRUST WAIKATO AIR AMBULANCE APPROVED OPERATORS ONLY

Effective: 7 APR 11

ELEV 11

CAT H

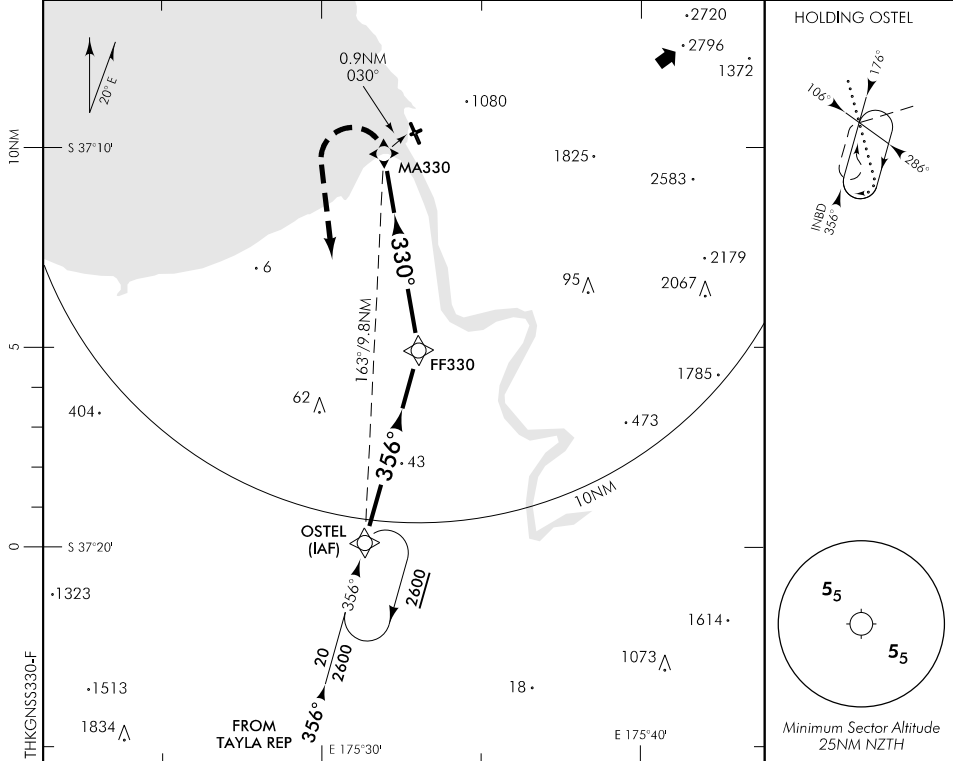
THAMES

NZTH

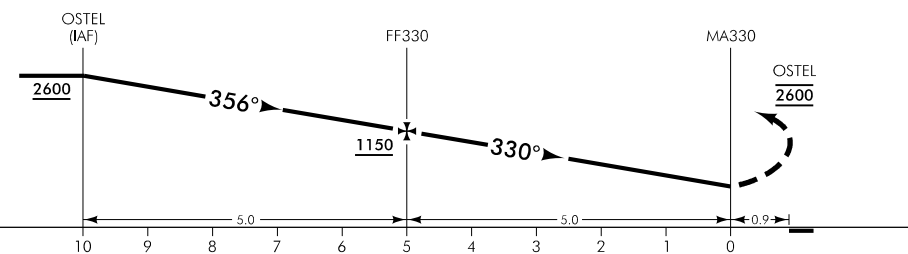
RNAV (GNSS) 330

CHRISTCHURCH CONTROL: 125.3 123.8

UNATTENDED: 124.5



Use NZTH QNH



MISSED APCH: Climbing turn LEFT, track direct to OSTEL 2600

DISTANCE to WPT	OSTEL	4	3	2	1	FF330	4	3	2	1	MA330
Advisory Altitude 6.5%	4600	4200	3800	3400	3000	2600	2200	1800	1400	1000	MDA
Category	H										
LNAV	630(619) - 2000										

FOR WESTPACTRUST WAIKATO AIR AMBULANCE APPROVED OPERATORS ONLY

Changes from 11 FEB 10: Graficule correction.

Effective: 6 FEB 14

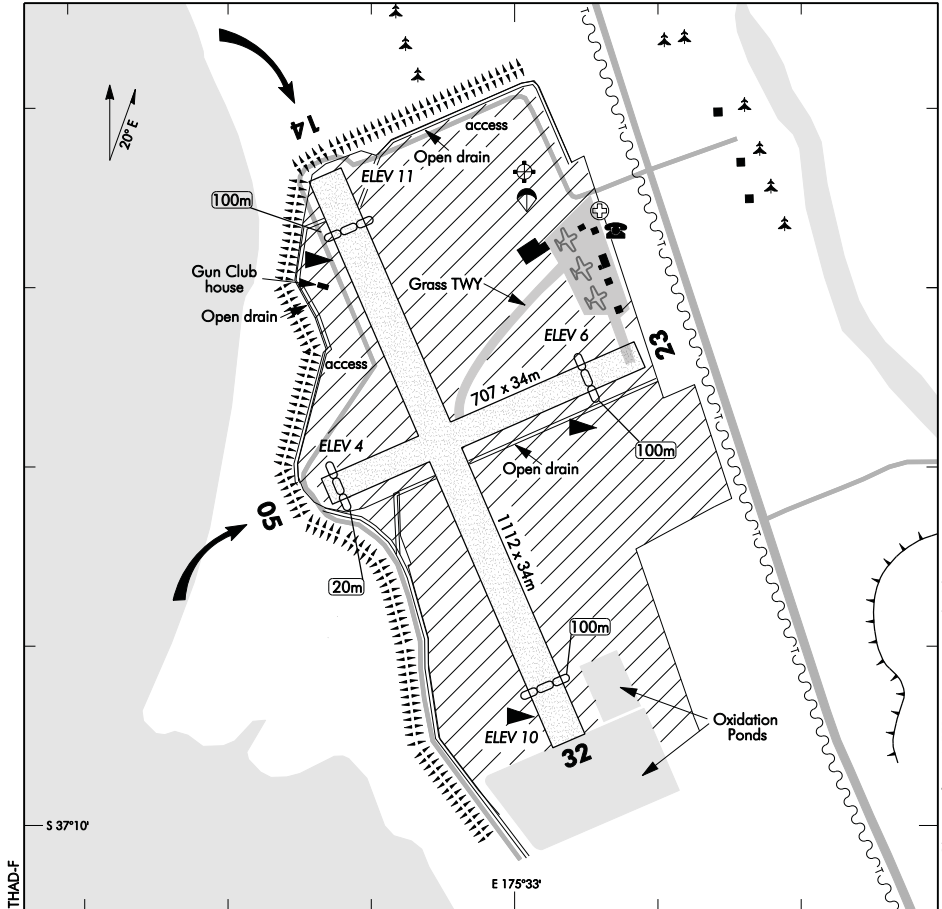
ELEV 11

NZTH

NON-CERTIFICATED

**THAMES
AERODROME**

UNATTENDED: 124.5



1. Take-off RWY 05 — Turn right as soon as practicable.
2. Aircraft movements restricted to runways and taxiways only.
3. Sharp edged tailskids prohibited.
4. **CAUTION:** Road and telephone lines to east of aerodrome. Downdraughts and turbulence in N and NE wind conditions.
5. Intensive gliding operations may take place particularly during weekends and public holidays.
6. **CAUTION:** Bird hazard at all times.
7. Surface soft after heavy rain.
8. Skydiving operations may take place at any time.

S 37 09 24 E 175 33 01*

Effective: 6 FEB 14

© Civil Aviation Authority

**THAMES
AERODROME**

NZTH

OPERATIONAL DATA**RWY**

RWY	SFC	Strength	Gp	Slope	ASDA	Take-off distance			LDG DIST
						1:20	1:30	1:40	
05 05	Gr(f)	ESWL 1270	4 5	Nil		607			687
23 23	Gr(f)	ESWL 1270	5 4	Nil		687			607
14 32	Gr(f)	ESWL 1270	8	Nil		1012			1012

LIGHTING

Nil

FACILITIES

Fuel: Jet A1, Avgas 100 available via Fuelcard.

Limited repairs

SUPPLEMENTARY

Operator: Thames Coromandel District Council, Private Bag, Thames.

Tel (07) 868 0200 Fax (07) 868 0234

Email: customer.services@tcdc.govt.nz

Website: www.tcdc.govt.nz

Commercial operations subject to prior approval of the operator.

Landing fees payable — refer to website for current pricing.

Honesty boxes located at fuel pumps and southern end of Hauraki Aero Club building.