

ELEV 11

CAT H

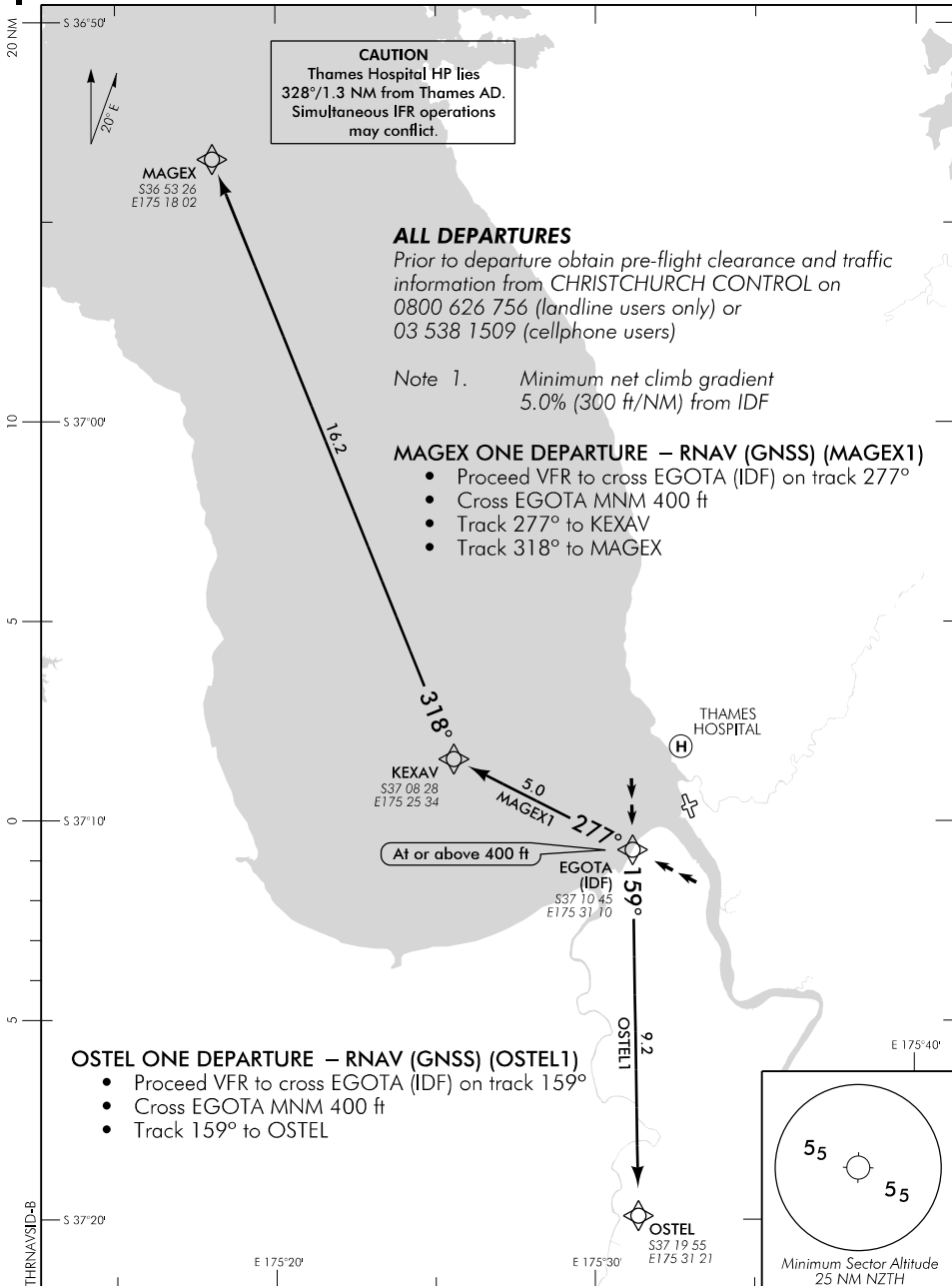
THAMES

NZTH

RNAV (GNSS) SID

BAY APPROACH: 125.3 123.8

UNATTENDED: 124.5



Changes from 31 MAR 16: Caution added, Thames Hospital added, telephone number changed, ATC call sign amended.

FOR WESTPAC TRUST WAIKATO AIR AMBULANCE APPROVED OPERATORS ONLY

Effective: 20 JUL 17

