

ELEV 100

CAT A,B

**TAKAKA**

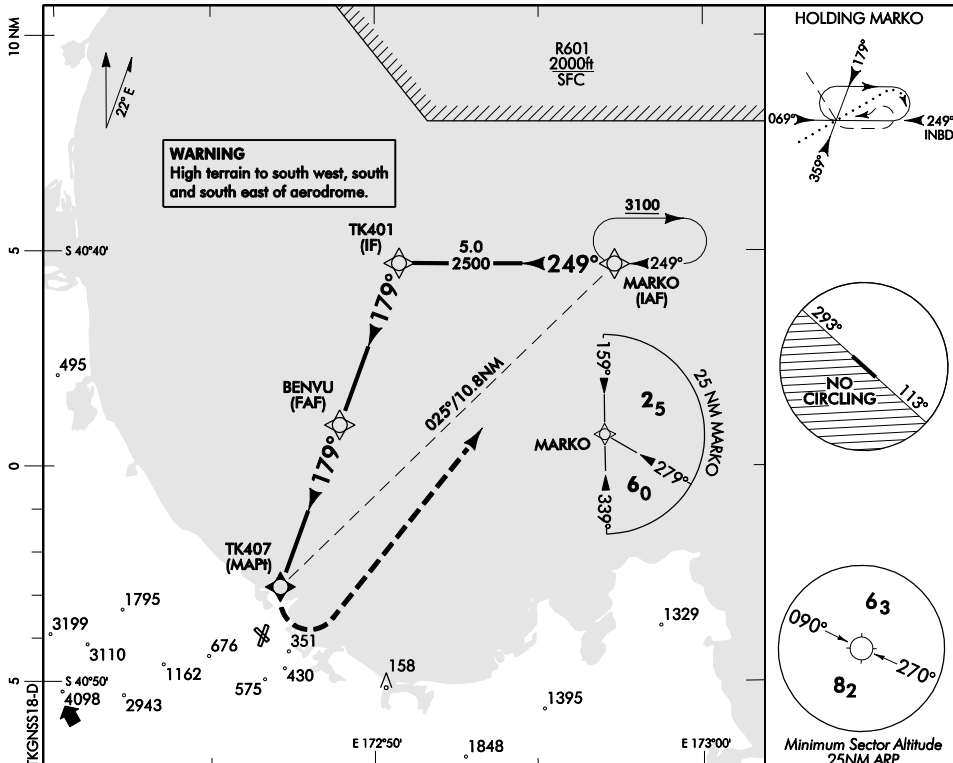
RWY 18 THR ELEV 75

**RNAV (GNSS) RWY 18**

NELSON TOWER: 127.4 123.3

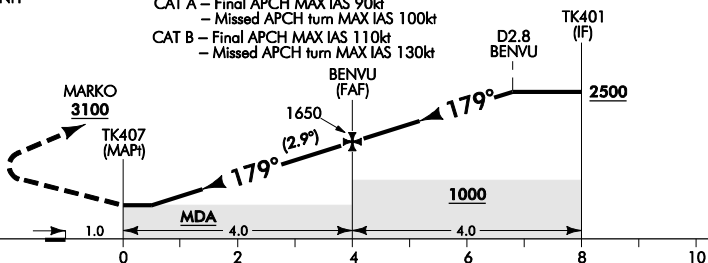
NELSON ATIS: 129.1

UNATTENDED: 119.1



Use Takaka QNH

- CAT A – Final APCH MAX IAS 90kt  
– Missed APCH turn MAX IAS 100kt
- CAT B – Final APCH MAX IAS 110kt  
– Missed APCH turn MAX IAS 130kt



**MISSED APCH:** Turn LEFT direct to MARKO 3100

DISTANCE to WPT	TK407	0.5	1	2	3	BENVU	1	2	3	TK401
Advisory Altitude 5%	MDA	MDA	750	1050	1350	1650	1950	2250	2550	2850
Category	A			B			C		D	
LNAV	D580(505) – 2000			D800(725) – 2500			NA			
Circling *	D770(670) – 2000			D900(800) – 2800			NA			

\* Circling NA south west of RWY 11/29

Changes from 2 JUN 11: IF18, FF18 and MA18 renamed.

**Effective: 28 JUL 11**

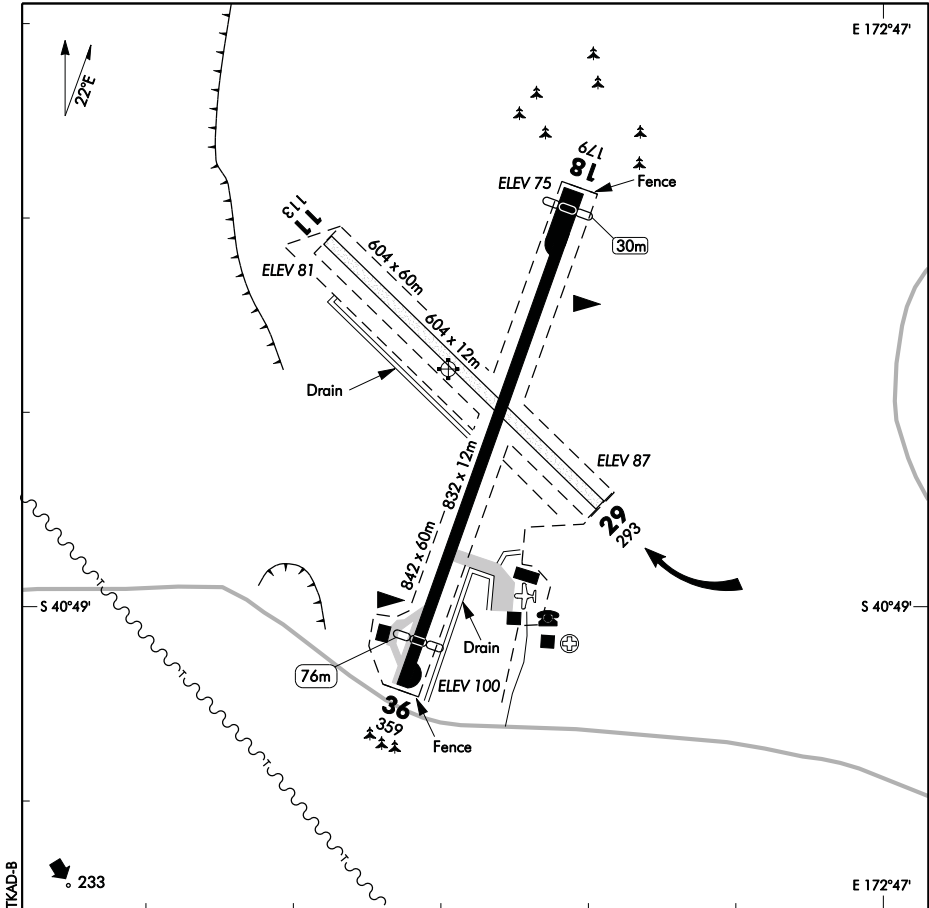


ELEV 100

NZTK

NON-CERTIFICATED

UNATTENDED: 119.1

**TAKAKA  
AERODROME**

1. Grass areas unusable, movements restricted to paved or gravel runway and taxiway only.
2. **CAUTION:** Runways slippery in frosty conditions. Outer edges of strips unusable. Severe turbulence can be experienced on take-off RWY 18 in S and SW wind conditions.
3. **CAUTION:** Trees just south of road on short final to RWY 36.

S 40 48 48 E 172 46 31\*

**Effective: 23 SEP 10**

© Civil Aviation Authority

**TAKAKA  
AERODROME**

Changes from 4 SEP 03: ELEV, VAR, RWY data updated.

NZTK

**OPERATIONAL DATA****RWY**

RWY	SFC	Strength	Gp	Slope	ASDA	Take-off distance			LDG DIST
						1:20	1:30	1:40	
11 29	GRVL	ESWL 1000	4	0.33U 0.33D	604	604			604
18 18	B	ESWL 3000	5 7	0.94U	832	756			802
36 36	B	ESWL 3000	7 5	0.94D	832	802			756

**MINIMA**

IFR Take-off		
RWY	Day	Night
18	600–1500	NA
36	300–1500	NA

**LIGHTING**

Nil

**FACILITIES**

Nil

**SUPPLEMENTARY**

Operator: Takaka Aerodrome Management Committee, PO Box 151, Takaka.  
Tel (03) 525 9187

Available for general use without the permission of the operator.

Fees payable.

ELEV 100

CAT A,B

**TAKAKA**

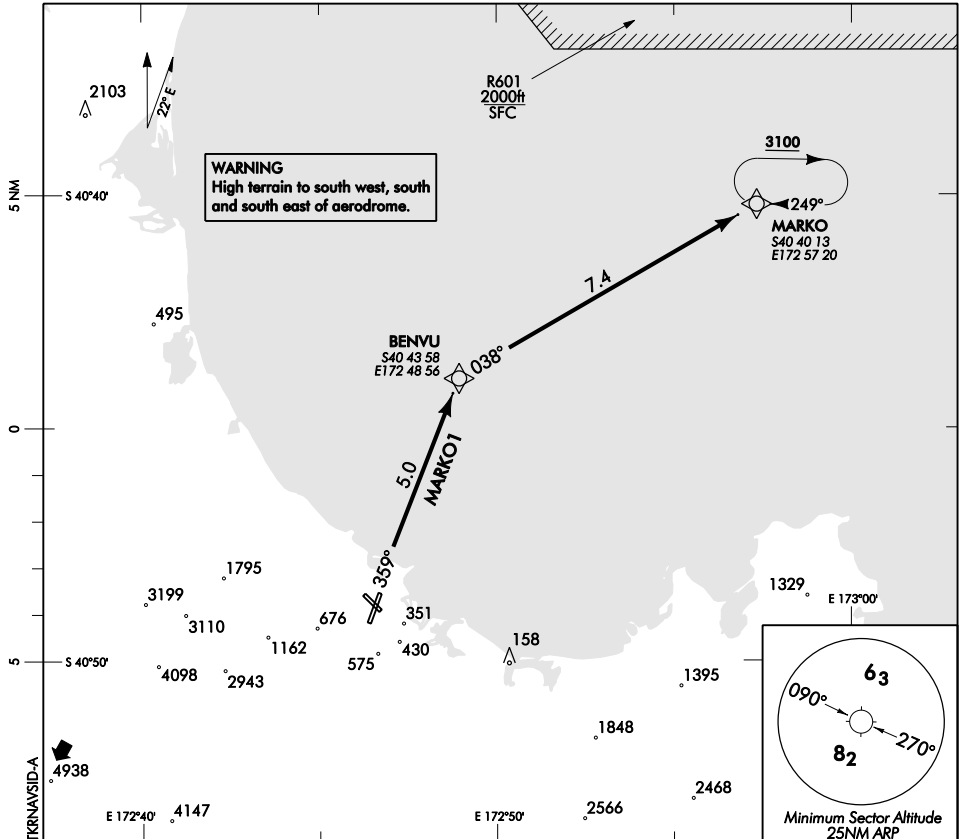
NZTK

**RNAV (GNSS) SID**

NELSON TOWER: 127.4 123.3

NELSON ATIS: 129.1

UNATTENDED: 119.1

**ALL DEPARTURES**

Contact Nelson Tower 127.4 MHz for clearance and traffic information prior to entering IMC or controlled airspace.

Outside Nelson Tower hours contact Christchurch Control 123.7 MHz.

Minimum net climb gradient 3.3% (200ft/NM).

**RWY 36****MARKO ONE DEPARTURE – RNAV (GNSS) (MARKO1)**

**WARNING:** Trees 90ft AGL located 50m either side of RWY end.

- Track 359° to BENVU WPT
- Turn RIGHT track 038° to MARKO
- Climb in the MARKO holding pattern if required, intercept track

**RWY 18**

Depart maintaining own terrain clearance visually until clear of the coast at MNM 500ft, track direct to BENVU for MARKO1 departure.

Effective: 2 JUN 11

