

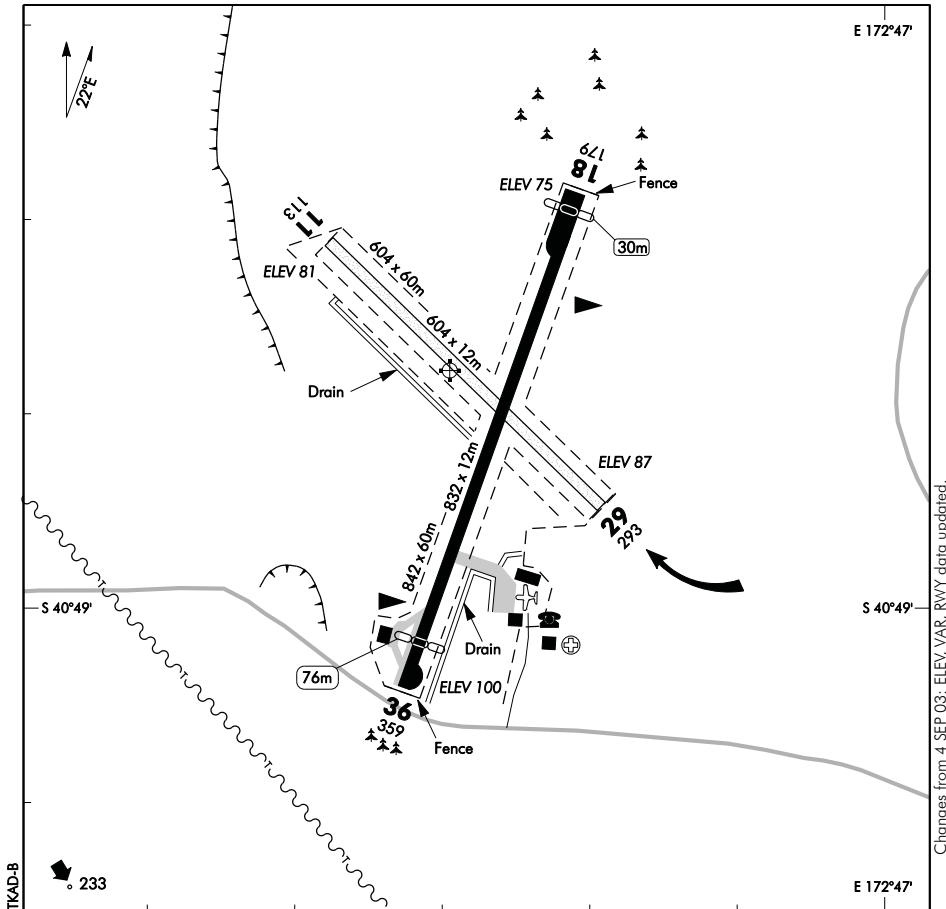
ELEV 100

NZTK

NON-CERTIFICATED

**TAKAKA**  
**AERODROME**

UNATTENDED: 119.1



1. Grass areas unusable, movements restricted to paved or gravel runway and taxiway only.
2. **CAUTION:** Runways slippery in frosty conditions. Outer edges of strips unusable. Severe turbulence can be experienced on take-off RWY 18 in S and SW wind conditions.
3. **CAUTION:** Trees just south of road on short final to RWY 36.

S 40 48 48 E 172 46 31\*

**Effective: 23 SEP 10**

© Civil Aviation Authority

**TAKAKA**  
**AERODROME**

NZTK

**OPERATIONAL DATA****RWY**

RWY	SFC	Strength	Gp	Slope	ASDA	Take-off distance			LDG DIST
						1:20	1:30	1:40	
11 29	GRVL	ESWL 1000	4	0.33U 0.33D	604	604			604
18 18	B	ESWL 3000	5 7	0.94U	832	756			802
36 36	B	ESWL 3000	7 5	0.94D	832	802			756

**MINIMA**

IFR Take-off		
RWY	Day	Night
18	600-1500	NA
36	300-1500	NA

**LIGHTING**

Nil

**FACILITIES**

Nil

**SUPPLEMENTARY**

Operator: Takaka Aerodrome Management Committee, PO Box 151, Takaka.  
Tel (03) 525 9187

Available for general use without the permission of the operator.

Fees payable.