

ELEV 2496

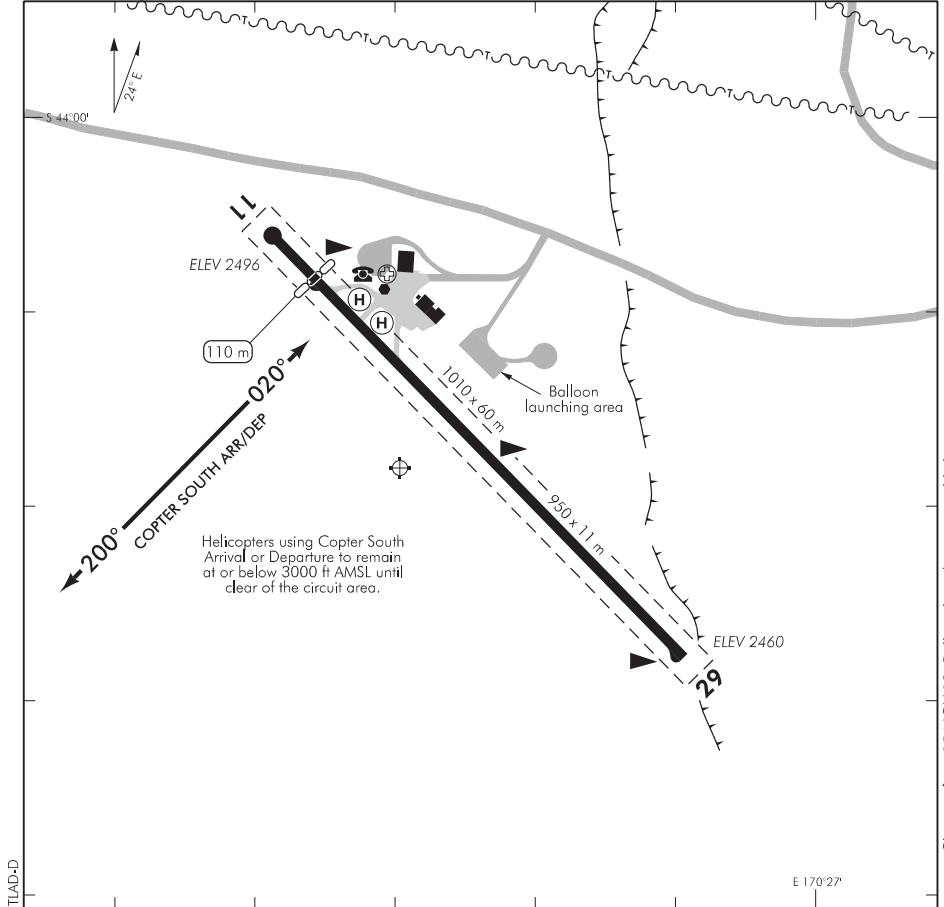
NZTL

NON-CERTIFICATED

**TEKAPO
AERODROME**

CHRISTCHURCH INFORMATION: 123.5

ALPS TRAFFIC/UNATTENDED: 118.6



1. Movements restricted to paved areas.
2. Non-standard RWY markings for Air Safaris reference and use only.
3. **CAUTION:** Main highway on approach to RWY 11. Maintain adequate clearance.
4. **CAUTION:** Tekapo/Mackenzie heliport located 1.5 NM to SW of aerodrome.
5. VFR operations within NZB978 Southern Alps MBZ are subject to special procedures. Refer to ENR 1.16 VFR Procedures, Mount Cook/Westland.

S 44 00 18 E 170 26 30*

Effective: 28 MAY 15

© Civil Aviation Authority

**TEKAPO
AERODROME**

RWY

RWY	SFC	Strength	Gp	Slope	ASDA	Take-off distance			LDG DIST
						1:20	1:30	1:40	
11 11	B	ESWL 2270	5 4	1.4D			950		840
29 29	B	ESWL 2270	4 5	1.4U			840		950

LIGHTING

LED emergency lighting available — full length. VFR night operations limited to Air Safaris approved pilots.

FACILITIES

Passenger

Fuel: Z Energy Airstop, Jet A1, Avgas 100, Access via Z Card

SUPPLEMENTARY

Operator: Air Safaris and Services (NZ) Ltd, PO Box 71, Lake Tekapo 7945
Tel (03) 680 6880 Fax (03) 680 6740

Available for use strictly subject to prior approval and briefing by the aerodrome operator