

ELEV 250

CAT H

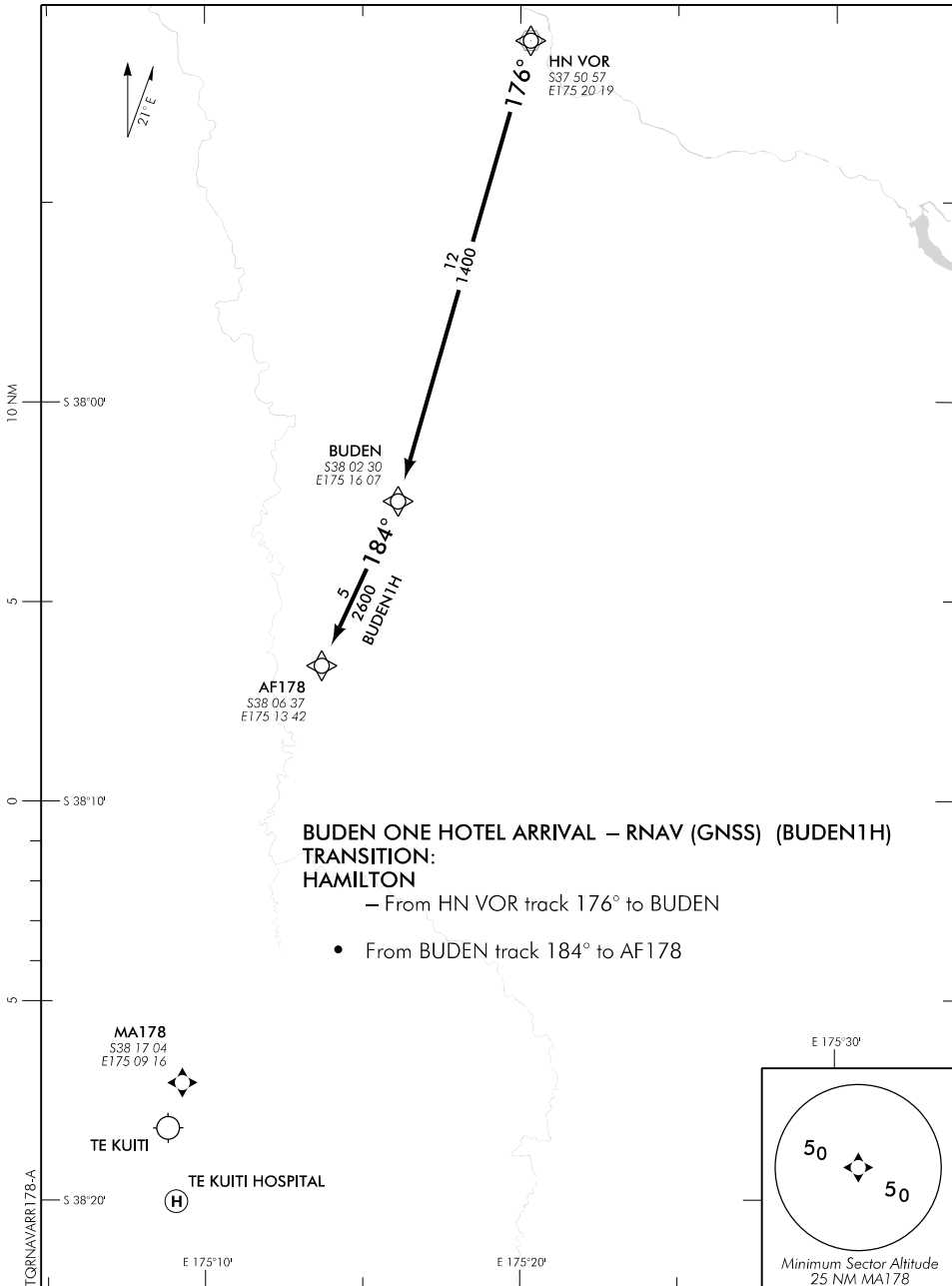
# TE KUITI HOSPITAL

NZTQ

## RNAV (GNSS) ARRIVAL 178

CHRISTCHURCH CONTROL: 125.3 123.8

UNATTENDED: 119.1



New chart.

**Effective: 30 MAR 17**

# TE KUITI HOSPITAL RNAV (GNSS) ARRIVAL 178

ELEV 250

CAT H

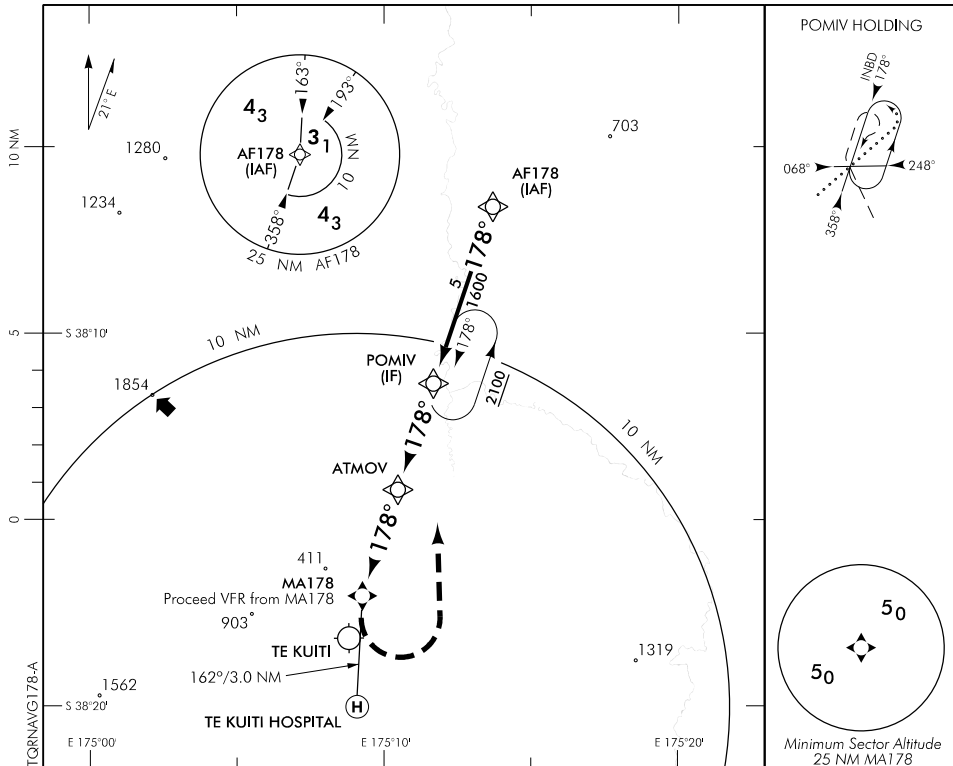
# TE KUITI HOSPITAL

NZTQ

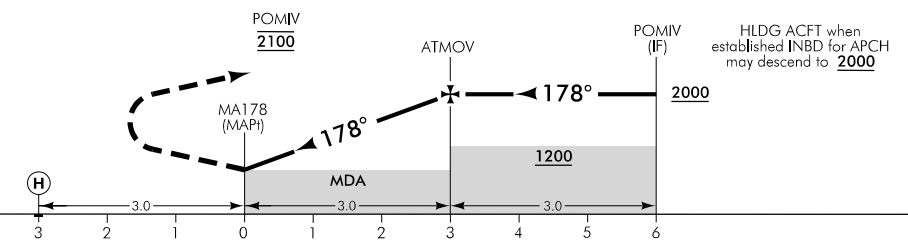
**RNAV (GNSS) 178**

CHRISTCHURCH CONTROL: 125.3 123.8

UNATTENDED: 119.1



Use Te Kuiti Hospital QNH



**MISSED APCH:** Turn LEFT direct to POMIV 2100

DISTANCE to WPT	MA178	1	2	ATMOV	1	2	POMIV
Advisory Altitude 6.5%	MDA	1250	1650	2050	2450	2850	3250
Category	H						
LNAV	840(590) – 5000						

New chart.

**Effective: 30 MAR 17**