

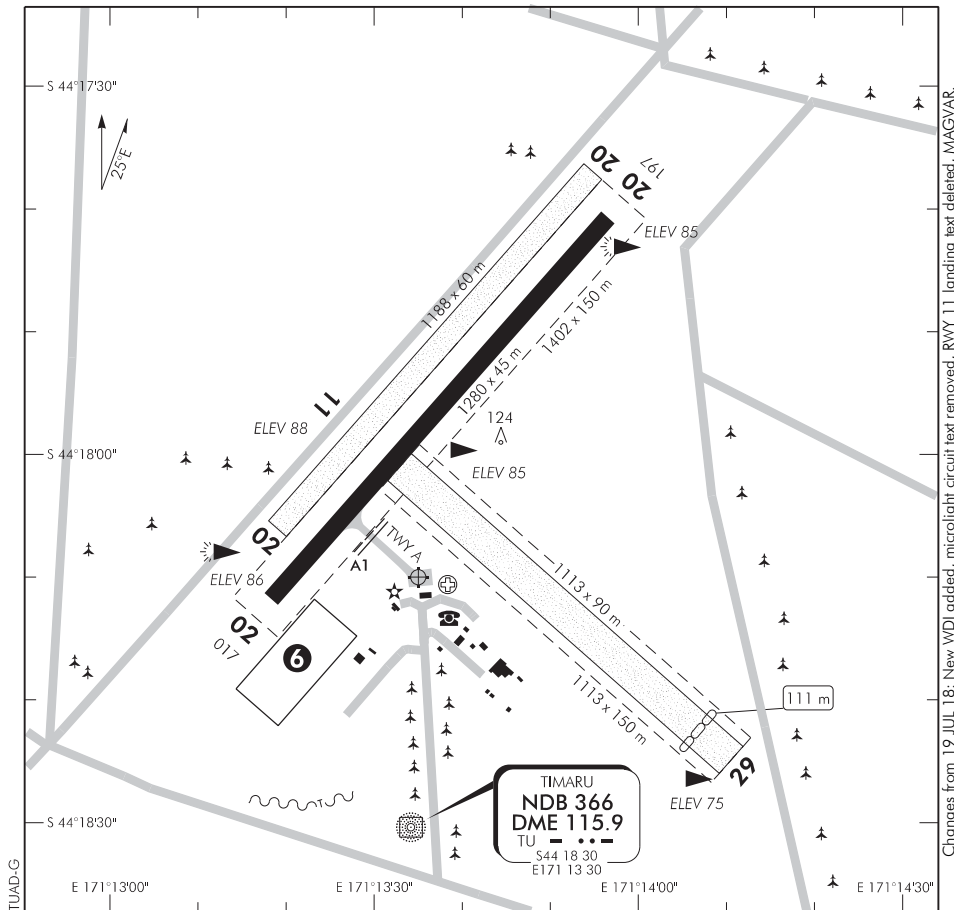
ELEV 89

NZTU

CHRISTCHURCH CONTROL: 129.3

**TIMARU****AERODROME**

UNATTENDED: 119.5



Changes from 19 JUL 18: New WDI added, microlight circuit removed, RWY 11 landing text deleted, MAGVAR.

1. Simultaneous operations on parallel paved and grass runways prohibited.
2. RWY 11 threshold coincident with eastern edge of paved RWY 02/20.
3. **CAUTION:** Bird hazard. Birds seasonally on aerodrome and larger number present on the outlying fields when irrigation or cultivation taking place.
- D** 4. Intensive gliding operations may take place particularly during weekends and public holidays.
5. Glider traffic take-off and land at an angle to RWY 11. Exercise caution when taxiing from Aero Club area to holding position RWY 11.
- D** 6. Model aircraft flying may take place during daylight hours subject to specific prior approval of the airport operator.

S 44 18 10 E 171 13 31

**Effective: 25 FEB 21**

© Civil Aviation Authority

**TIMARU**  
**AERODROME**

NZTU

**OPERATIONAL DATA (1)****RWY**

RWY	SFC	Strength	Gp	Slope	ASDA	Take-off distance			LDG DIST
						1:20	1:40	1:50	
02 20	B	PCN 35* F/A/X/T	8	Nil	1280			1340	1280
02 20	Gr	ESWL 5700	8	Nil	1188	1188			1188
11 29	Gr	ESWL 9080	8	0.36D 0.36U	1113	1002 1113			1113 1002

\* PCN 49 F/A/X/T applies to a central 23 m wide strip the length of RWY 02/20 with turning ends.

RESA: RWY 02 90 x 90 m  
RWY 20 190 x 90 m

**MINIMA**

IFR Take-off		
RWY	Day	Night
02/20	300-1500	300-1500
11/29	300-1500	NA

**LIGHTING**

**PAL:** 119.5 Standard operation — Transmit 5 pulses within 3 seconds. Optimal reception within 20 NM of aerodrome at 2500 ft AMSL. Lights will be activated for 30 minutes.

PAL activates runway and taxiway lights, ABN and PAPI for both runways during night operations.

PAL activates PAPI for both runways during daylight operations.

Brilliance set by daylight sensors based on ambient conditions.

Day: PAPI 100%

Dusk/Dawn: RWY and TWY 100%, PAPI 30%, ABN on.

Night: RWY and TWY 30%, PAPI 10%, ABN on.

A voice message is transmitted notifying pilots there are 10 minutes remaining prior to the lights turning off. Repeat transmission of 5 pulses resets lights for a further 30 minutes.

Runway: 02/20 PAPI 3.00°/TCH 47, LIL RWY

RWY edge light spacing — 60 m

Aerodrome: ABN FLG W 2.5 SEC WDI

**D** Taxiway: CL Apron: Edge and Floodlighting

Standby power available.

(continued)