

ELEV 114

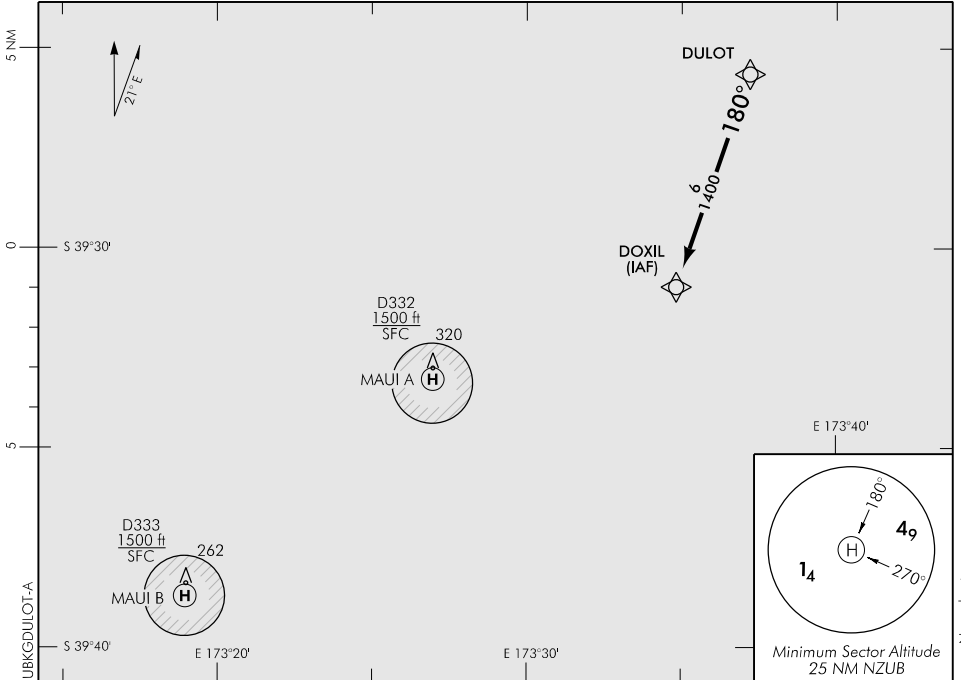
CAT H

**MAUI B**

NZUB

**RNAV (GNSS) DULOT ARRIVAL**

MAUI TRAFFIC: 133.65



1. For holding refer to Instrument Approach Chart

**FOR HELICOPTERS NEW ZEALAND APPROVED OPERATORS ONLY**

**Effective: 28 MAY 15**

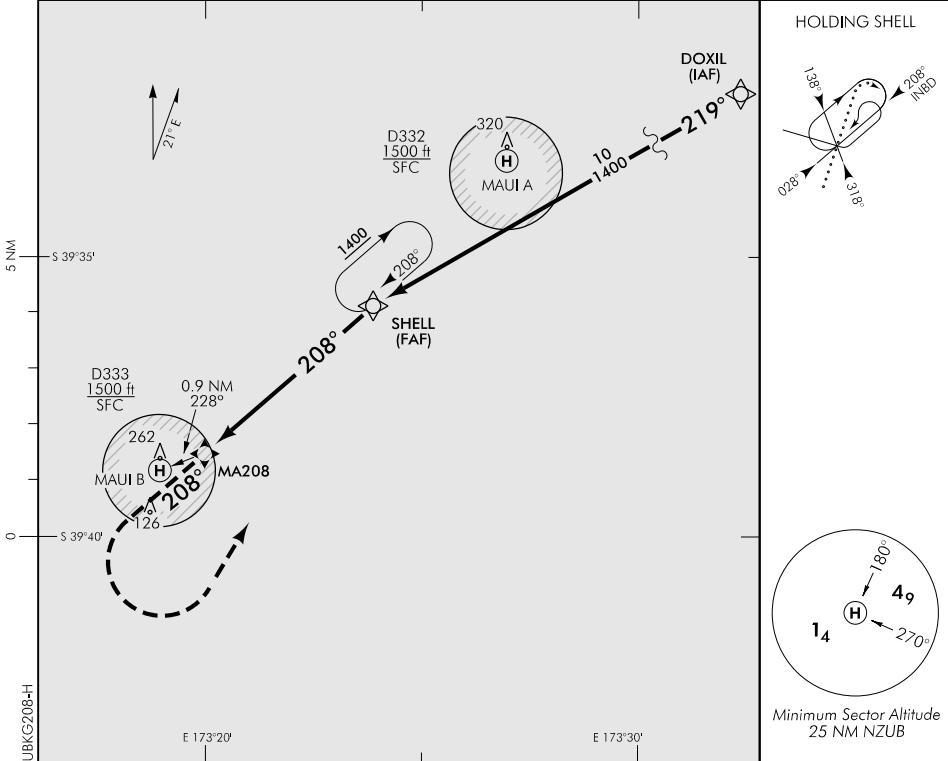
ELEV 114

CAT H

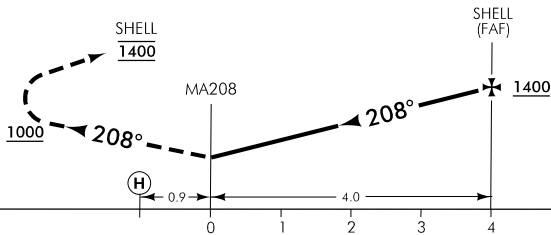
NZUB

**MAUI B**  
RNAV (GNSS) 208

MAUI TRAFFIC: 133.65



Use MAUI B QNH



Inbound track at SHELL to be within 60° of final APCH

MISSED APCH: Climb on 208° to 1000, turn LEFT, track direct to SHELL 1400

DISTANCE TO WPT	MA208	1	2	3	SHELL	1	2	3	4	5	6
Advisory Altitude 6.5%	MDA	800	1200	1600	2000	2400	2800	3200	3600	4000	4400
Category	H										
LNAV	400(286) - 2000										

**FOR HELICOPTERS NEW ZEALAND APPROVED OPERATORS ONLY**

Changes from 13 NOV 14: DOXIL - SHELL segment added.

**Effective: 28 MAY 15**