

ELEV 1575

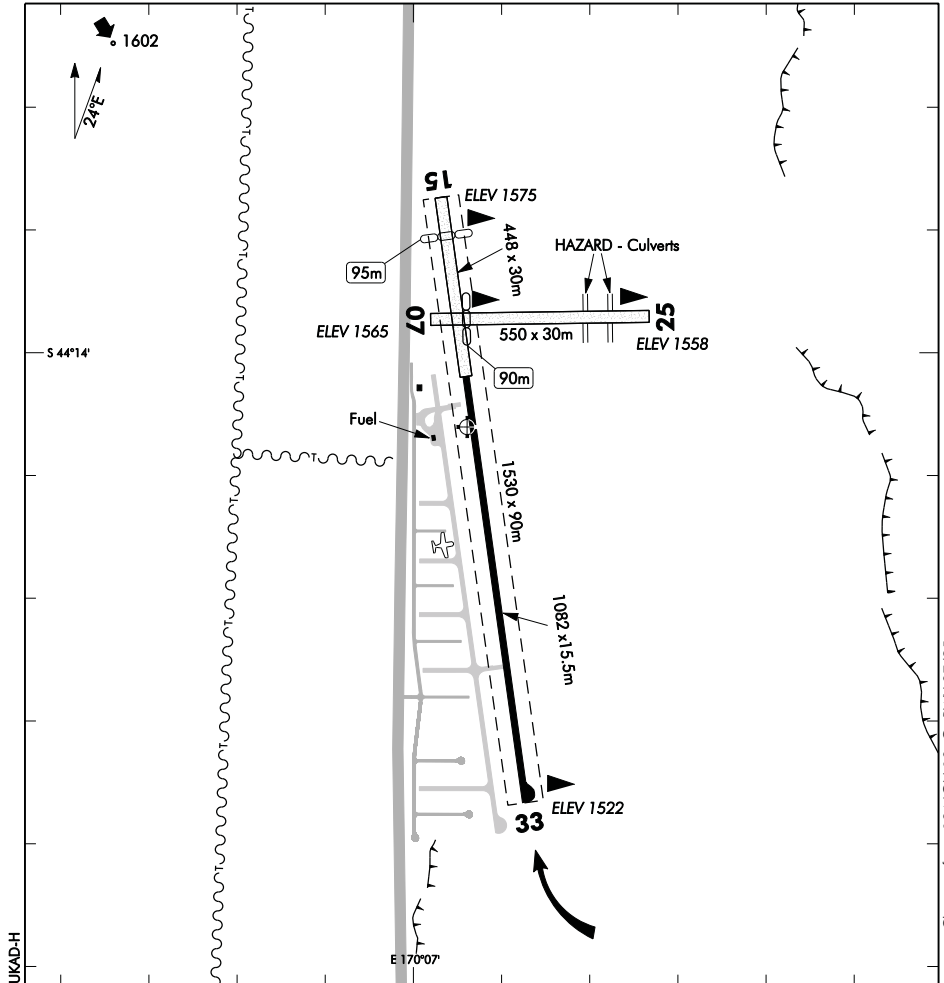
NZUK

NON-CERTIFICATED

PUKAKI**AERODROME**

CHRISTCHURCH INFORMATION: 123.5

UNATTENDED: 119.1



1. Take-off RWY 33 — Turn right 20° crossing northern aerodrome boundary.
2. RWY 15/33 landings confined to paved runway unless prior permission obtained from operator to use northern grass as well.
3. Grass surface may soften during thaw.
4. **CAUTION:** Occasional parachuting operations.

S 44 14 06 E 170 07 06*

Effective: 22 SEP 11

© Civil Aviation Authority

**PUKAKI
AERODROME**

NZUK

OPERATIONAL DATA**RWY**

RWY	SFC	Strength	Gp	Slope	ASDA	Take-off distance			LDG DIST
						1:20	1:30	1:40	
07	Gr	ESWL 9080	3 2	0.39D		550			460
25	Gr	ESWL 9080	2 2	0.39U		460			550
15 33	B	PCN 10 F/B/Y/U	8	1.0D 1.0U		1082 1082			1082 1082
15 33	B/Gr	ESWL 9080	8	1.0D 1.0U		1530 1435			1435 1530

LIGHTING

Nil

FACILITIES

Fuel: BP Jet A1 and Avgas

SUPPLEMENTARY

Operator: Pukaki Airport Board,
R.Ramsay, 28 Tekapo Drive, Twizel
Tel (03) 435 0873 Mob (021) 042 3265
www.airportpukaki.co.nz

Landing fees: Landing fees charged through 'Aimm' — late payments incur an admin fee.
By visiting NZUK you agree to the Terms and Conditions of Use found in full
at www.AerodromeIT.co.nz/ad/nzuk