

ELEV 573

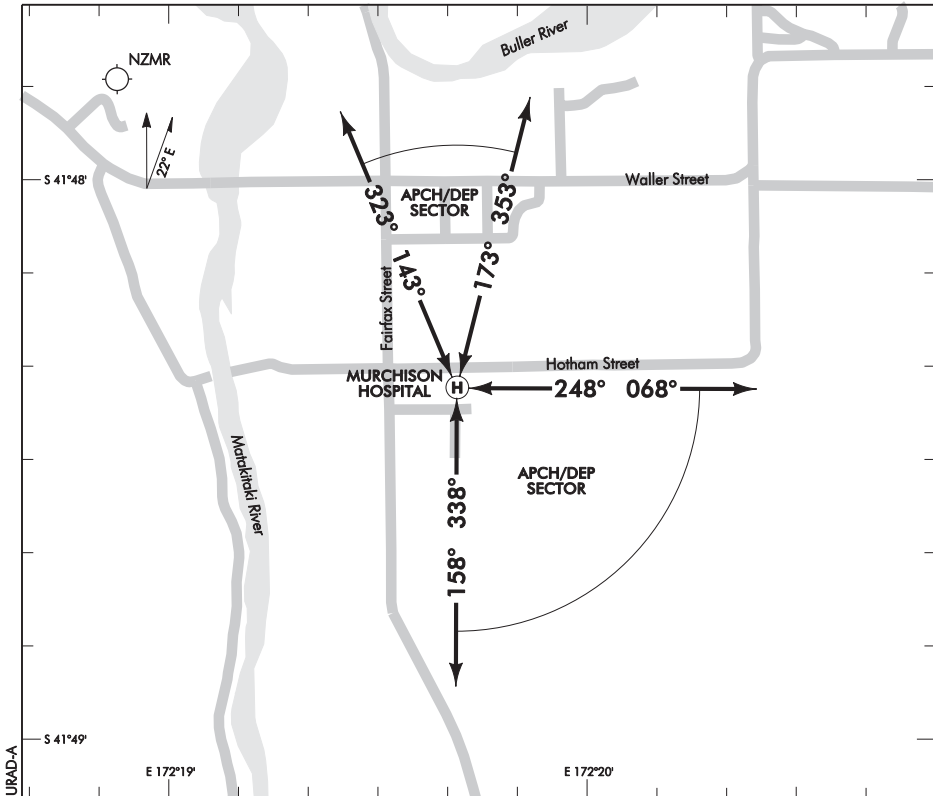
NZUR

NON-CERTIFICATED

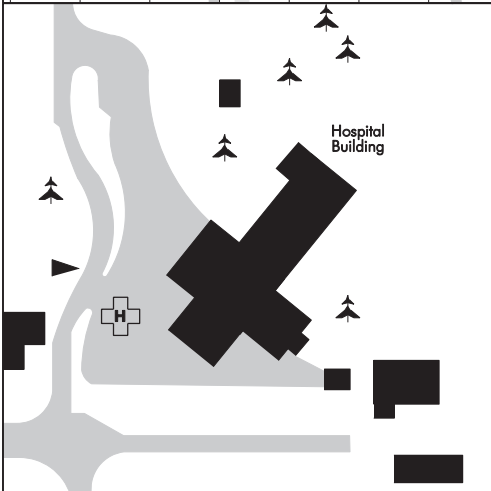
MURCHISON HOSPITAL

HELIPORT

UNATTENDED: 119.1



Changes from 4 SEP 03: Helipad relocated, APCH/DEP sectors, buildings.



Obstacles: Trees to north and south of APCH/DEP sector

S 41 48 23 E 172 19 43*

Effective: 4 APR 13

© Civil Aviation Authority

MURCHISON HOSPITAL

HELIPORT

FATO/TLOF

	SIZE	SFC	STRENGTH	MARKINGS
FATO		G		
TLOF	6m x 6m	B		Standard

Maximum helicopter size 13.5m overall length.

LIGHTING

Nil

FACILITIES

Nil

SUPPLEMENTARY

Operator: Nelson-Marlborough District Health Board, Private Bag 18, Nelson.
Tel (03) 546 1800 Fax (03) 546 1680

Available for limited use (normally only dedicated Air Ambulance) subject to the prior agreement of the operator.