

ELEV 250

CAT H

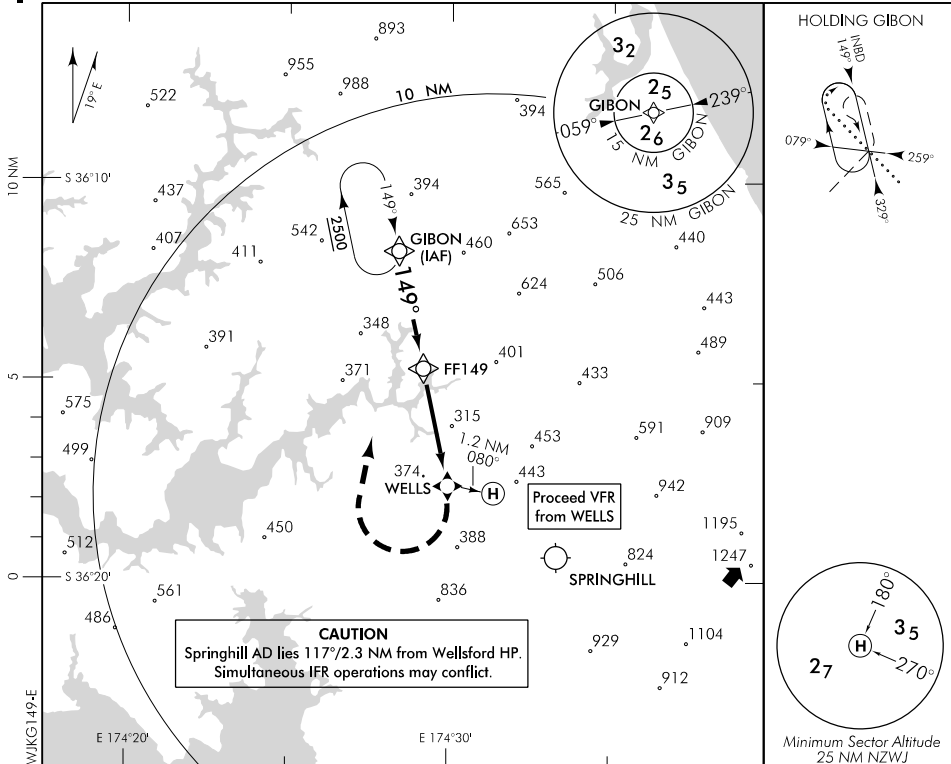
WELLSFORD

NZWJ

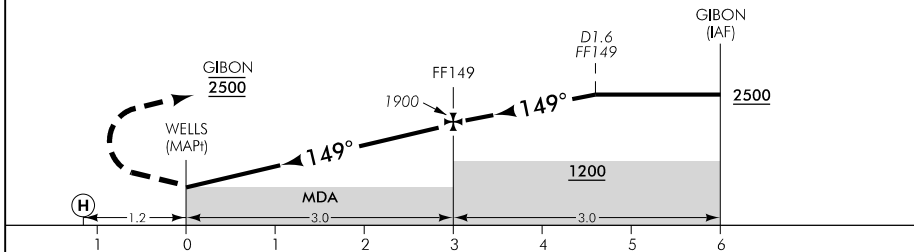
RNAV (GNSS) 149

AUCKLAND APPROACH: 124.3 118.5

UNATTENDED: 119.1



Use Wellsford QNH



MISSED APCH: Turn RIGHT direct to GIBON 2500

| | | | | | | | |
|------------------------|-----------------|------|------|-------|------|------|-------|
| DISTANCE to WPT | WELLS | 1 | 2 | FF149 | 1 | 2 | GIBON |
| Advisory Altitude 6.5% | MDA | 1100 | 1500 | 1900 | 2300 | 2700 | 3100 |
| Category | H | | | | | | |
| LNAV | 690(440) - 2200 | | | | | | |

FOR NORTHLAND EMERGENCY SERVICES TRUST APPROVED OPERATORS ONLY

Effective: 14 SEP 17

WELLSFORD
RNAV (GNSS) 149

Changes from 4 FEB 16: FF149 profile correction, COM header.

