

ELEV 250

CAT H

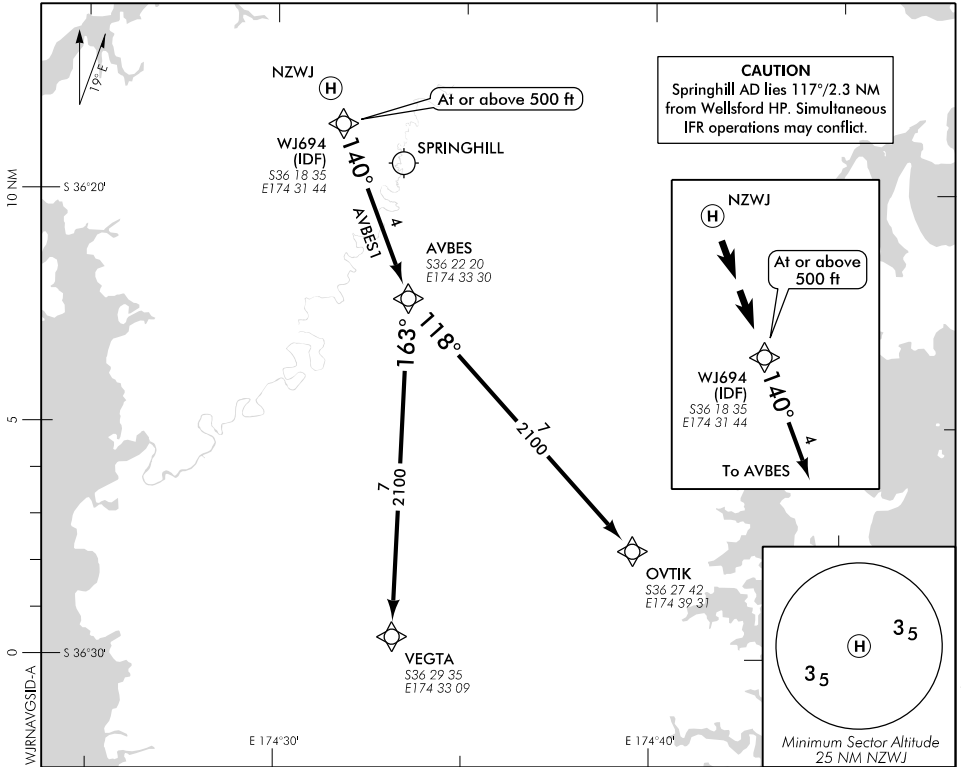
WELLSFORD

NZJW

RNAV (GNSS) SID

AUCKLAND APPROACH: 124.3 129.5
CHRISTCHURCH INFORMATION: 118.5

UNATTENDED: 119.1



ALL DEPARTURES

Prior to departure obtain pre-flight clearance and traffic information from AUCKLAND CONTROL Tel 0800 626 756 (landline users only) or 03 358 1509 (cellphone users).
If no pre-flight clearance or IFR traffic information received prior to departure, maintain VFR and clear of controlled airspace and contact AUCKLAND APPROACH 124.3 or 129.5 MHz or CHRISTCHURCH INFORMATION 118.5 MHz.

- Note 1. Minimum net climb gradient 5.0% (300 ft/NM) unless higher stated
2. Maintain own terrain clearance by visual reference to Initial Departure Fix (IDF)

AVBES ONE DEPARTURE – RNAV (GNSS) (AVBES1)

- Track 140° via WJ694 (IDF) to AVBES
- Cross WJ694 at or above 500 ft

TRANSITIONS:

- OVTIK**
– From AVBES turn LEFT, track 118° to OVTIK
- VEGTA**
– From AVBES turn RIGHT, track 163° to VEGTA

Effective: 29 MAR 18

