

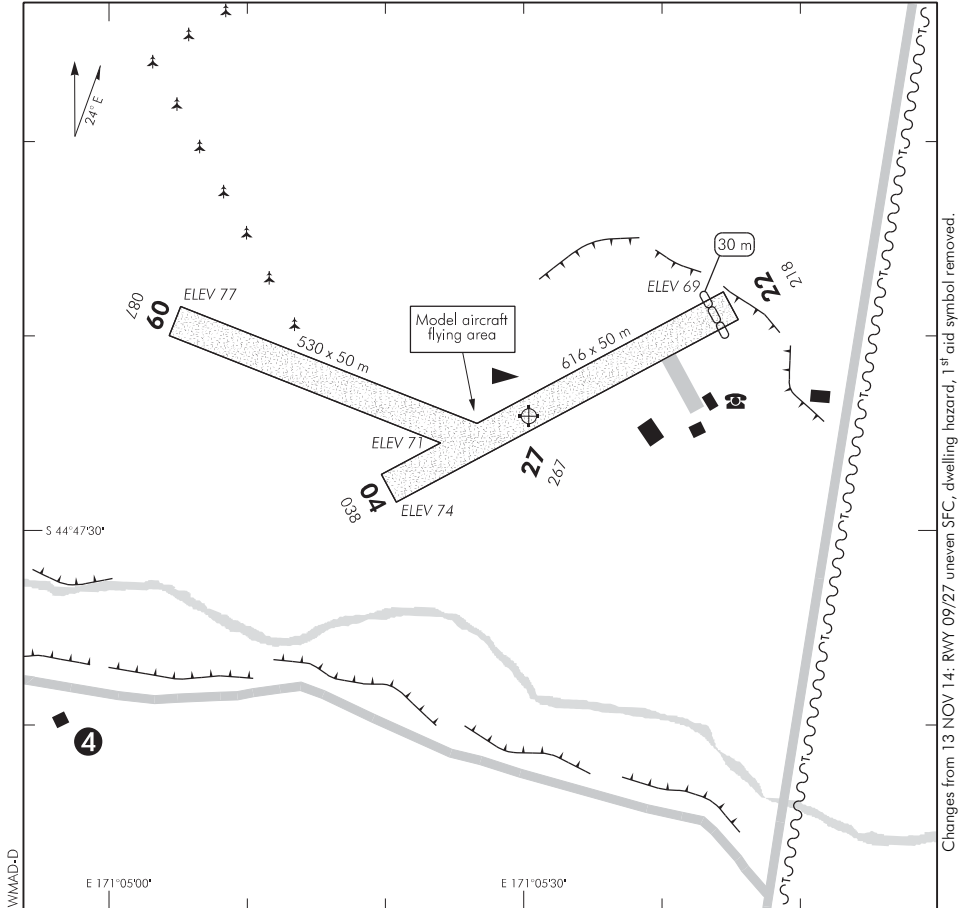
ELEV 80

NZWM

NON-CERTIFICATED

**WAIMATE
AERODROME**

UNATTENDED: 119.1



1. Sheep grazing.
2. Model aircraft flying may take place during daylight hours.
3. CAUTION: RWY 09/27 uneven surface.
- 4 Dwelling hazard.

S 44 47 24 E 171 05 30*

Effective: 2 FEB 17

© Civil Aviation Authority

**WAIMATE
AERODROME**

NZWM

OPERATIONAL DATA**RWY**

| RWY | SFC | Strength | Gp | Slope | ASDA | Take-off distance | | | LDG DIST |
|----------|-----|--------------|----|----------------|------|-------------------|------|------|-------------|
| | | | | | | 1:20 | 1:30 | 1:40 | |
| 04 22 | Gr | ESWL 3000 | 4 | 0.26D 0.26U | | 586 616 | | | 616 586 |
| 09 27 | Gr | ESWL 3000 | 4 | 0.35D 0.35U | | 530 | | | 530 |

LIGHTING

Nil

FACILITIES

Fuel by arrangement.

SUPPLEMENTARY

Operator: Waimate Aero Club, c/o Steve Fish, 86 Whitneys Rd, Waimate 7978
 Local telephone contact Mr Roger Small — Tel (03) 689 9040 or (027) 689 0600
 Email: shfish@xtra.co.nz

Available for general use without the permission of the operator.