

ELEV 41

NZWN

WELLINGTON RNAV STAR RWY 16 (1)

WELLINGTON CONTROL: 119.3 122.3 121.1

TOWER: 118.8 120.0

ATIS: 126.9

WNRNAVSTAR16-1-LS

OCEANIC TRANSITIONS TO SIMZI ARRIVALS

- From GULUT • Track 111° to SIMZI
- From TANEN • Track 087° to SIMZI
- From GORPLU • Track 068° to SIMZI

ATC requirements

- Fly the arrival procedure applicable to the runway-in-use as per Wellington ATIS
- At FIR Boundary contact
- CHRISTCHURCH CONTROL
- 123.7 MHz reporting position, altitude and arrival procedure being flown

SIMZI THREE BRAVO ARRIVAL – RNAV (SIMZIBB)

- Track 048° to KABUS
- Cross KABUS 5500 ft or above
- Track 048° to RUSKI
- Cross RUSKI 4000 ft or above
- Track 047° to HUWIT
- Cross HUWIT 6000 ft or below, MAX IAS 220 kt
- Track 071° to WITBY
- Cross WITBY 3000 ft or above, MAX IAS 190 kt

TPAPA THREE BRAVO ARRIVAL – RNAV (TPAPA3B)

- Track 150° to BRUDA
- Cross BRUDA 5000 ft or above
- Track 108° to HUWIT
- Cross HUWIT 6000 ft or below, MAX IAS 220 kt
- Track 071° to WITBY
- Cross WITBY 3000 ft or above, MAX IAS 190 kt

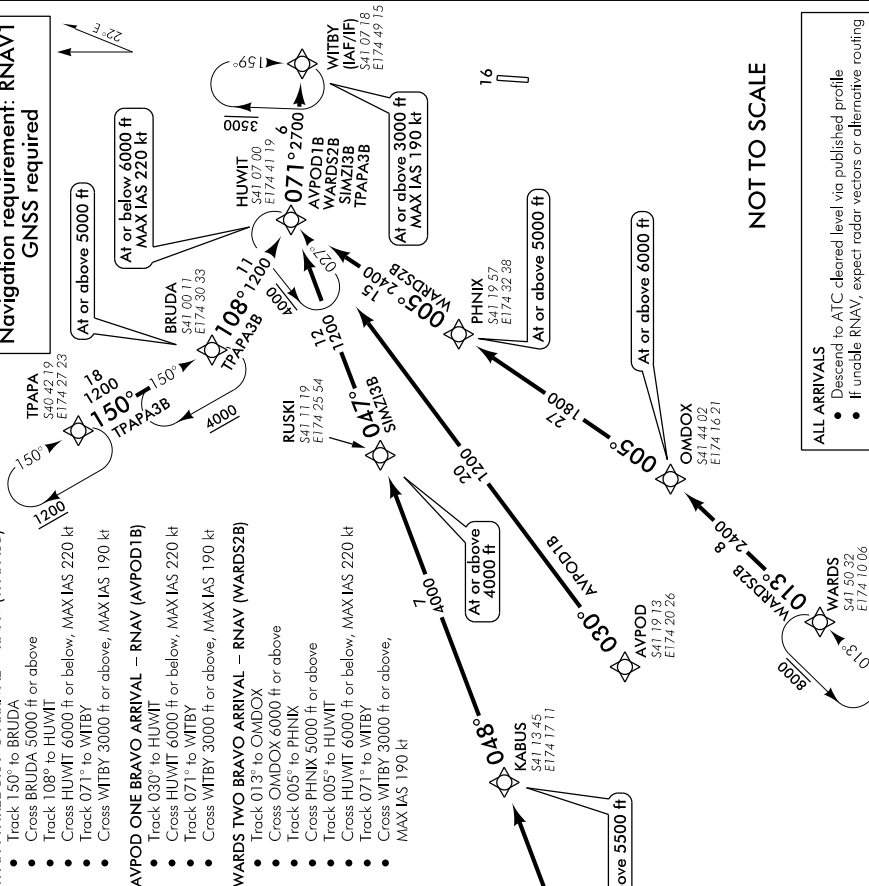
AVPOD ONE BRAVO ARRIVAL – RNAV (AVPOD1B)

- Track 030° to HUWIT
- Cross HUWIT 6000 ft or below, MAX IAS 220 kt
- Track 071° to WITBY
- Cross WITBY 3000 ft or above, MAX IAS 190 kt

WARDS TWO BRAVO ARRIVAL – RNAV (WARDS2B)

- Track 013° to OMDOX
- Cross OMDOX 6000 ft or above
- Track 005° to PHNIK
- Cross PHNIK 5000 ft or above
- Track 005° to HUWIT
- Cross HUWIT 6000 ft or below, MAX IAS 220 kt
- Track 071° to WITBY
- Cross WITBY 3000 ft or above, MAX IAS 190 kt

**Navigation requirement: RNAV1
GNSS required**



Changes from 25 MAY 17: WB4A arrival removed, AVPOD1A added.

Effective: 9 NOV 17

ELEV 41

NZWN

WELLINGTON

RNAV STAR RWY 16 (2)

WELLINGTON CONTROL: 119.3 122.3 121.1

TOWER: 118.8 120.0

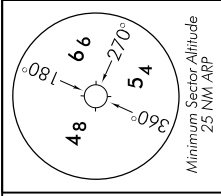
ATIS: 126.9

WNRNAVSTAR16R-4

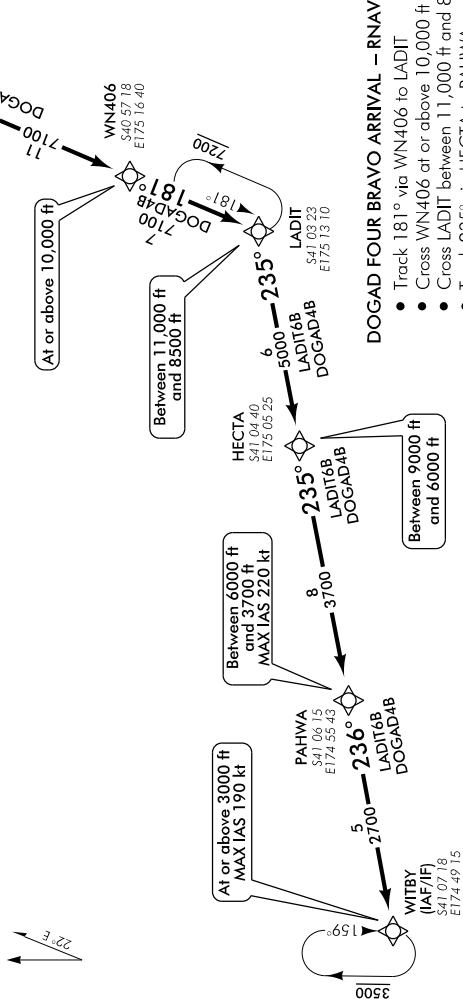
ALL ARRIVALS

- Descend to ATC cleared level via published profile
- If unable RNAV, expect radar vectors or alternative routing

**Navigation requirement: RNAV1
GNSS required**



NOT TO SCALE



DOGAD FOUR BRAVO ARRIVAL – RNAV (DOGAD4B)

- Track 181° via WN406 to LADIT
- Cross WN406 at or above 10,000 ft
- Cross LADIT between 11,000 ft and 8500 ft
- Track 235° via HECTA to PAHWA
- Cross HECTA between 9000 ft and 6000 ft
- Cross PAHWA between 6000 ft and 3700 ft, MAX IAS 220 kt
- Track 236° to WITBY
- Cross WITBY 3000 ft or above, MAX IAS 190 kt

LADIT SIX BRAVO ARRIVAL – RNAV (LADIT6B)

- Cross LADIT between 11,000 ft and 8500 ft
- Track 235° via HECTA to PAHWA
- Cross HECTA between 9000 ft and 6000 ft
- Cross PAHWA between 6000 ft and 3700 ft, MAX IAS 220 kt
- Track 236° to WITBY
- Cross WITBY 3000 ft or above, MAX IAS 190 kt

16

Changes from 4 FEB 16: MNM SECT ALT, minor track changes, LADIT to HECTA MSA.