

ELEV 41

CAT A,B,C,D

WELLINGTON

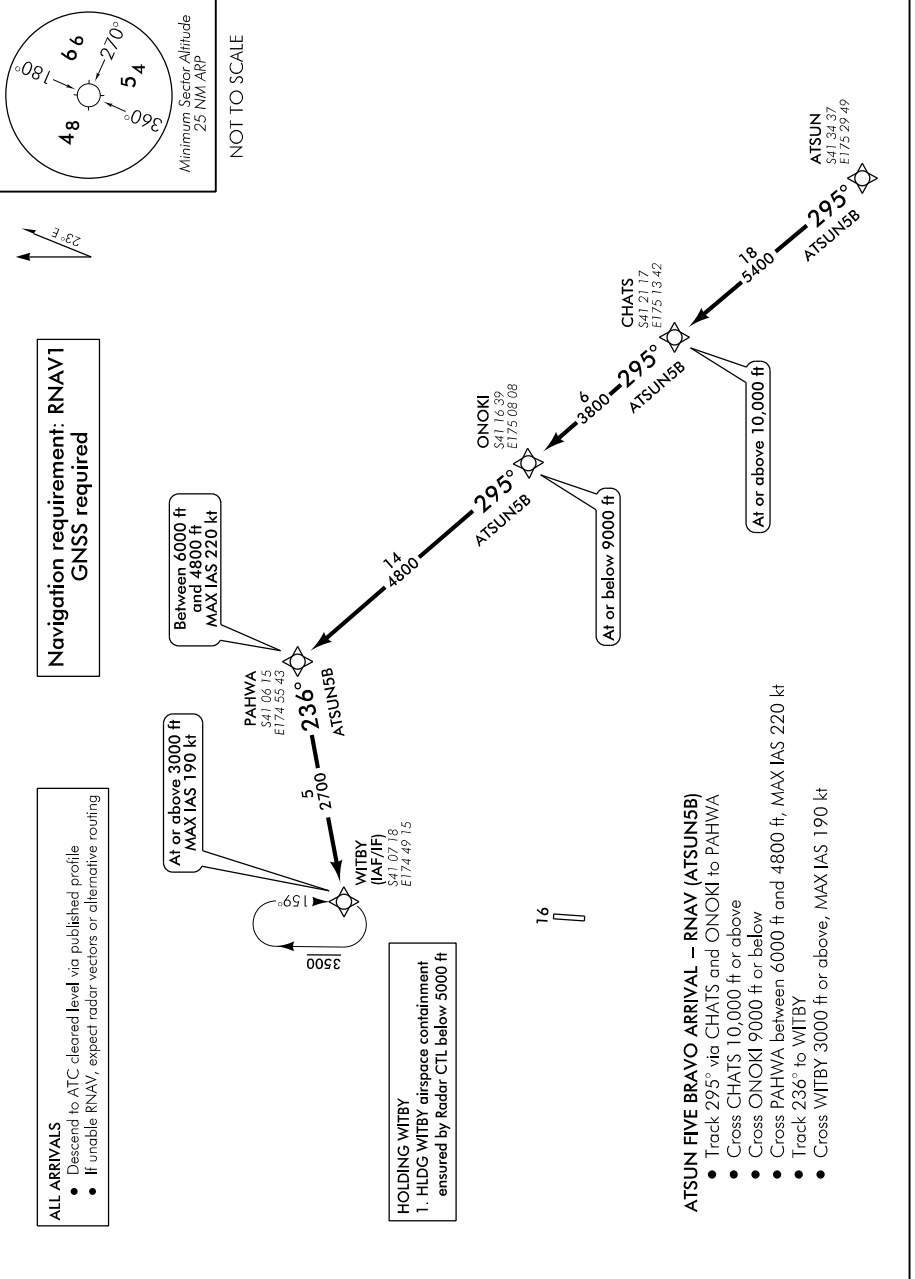
NZWN

RNAV STAR RWY 16 (3)

WELLINGTON APPROACH: 119.3 122.3 121.1

TOWER: 118.8 125.25

ATIS: 126.9



WNRNAVSTAR16-3-H

Changes from 19 JUL 18: WITBY HLDG note added, ACFT category added to header, MAGVAR.

ELEV 41

CAT B,C,D

WELLINGTON

NZWN

RNAV STAR RWY 16 (4)

WELLINGTON APPROACH: 119.3 122.3 121.1

TOWER: 118.8 125.25

ATIS: 126.9

WNZWNSTAR16-4-D

Navigation requirement: RNAV1 GNSS required

ALL ARRIVALS

- 2 minutes prior to the NZO/NZCC FIR boundary, contact CHRISTCHURCH CONTROL 123.7 MHz reporting position and level.
- ATC will issue appropriate STAR/Transition. Descend via STAR/Transition to ATC cleared level.
- If unable RNAV, expect radar vectors or alternative routing.

TPAPA ONE DELTA ARRIVAL - RNAV (TPAPA1D)

- From TPAPA track 150° to BRUDA
- Cross BRUDA at or above 5000 ft
- Track 108° to HUWIT
- Cross HUWIT at or below 6000 ft, MAX IAS 210 kt

AVPOD ONE DELTA ARRIVAL - RNAV (AVPOD1D)

- From AVPOD track 030° to HUWIT
- Cross HUWIT at or below 6000 ft, MAX IAS 210 kt

WARDS TWO DELTA ARRIVAL - RNAV (WARDS2D)

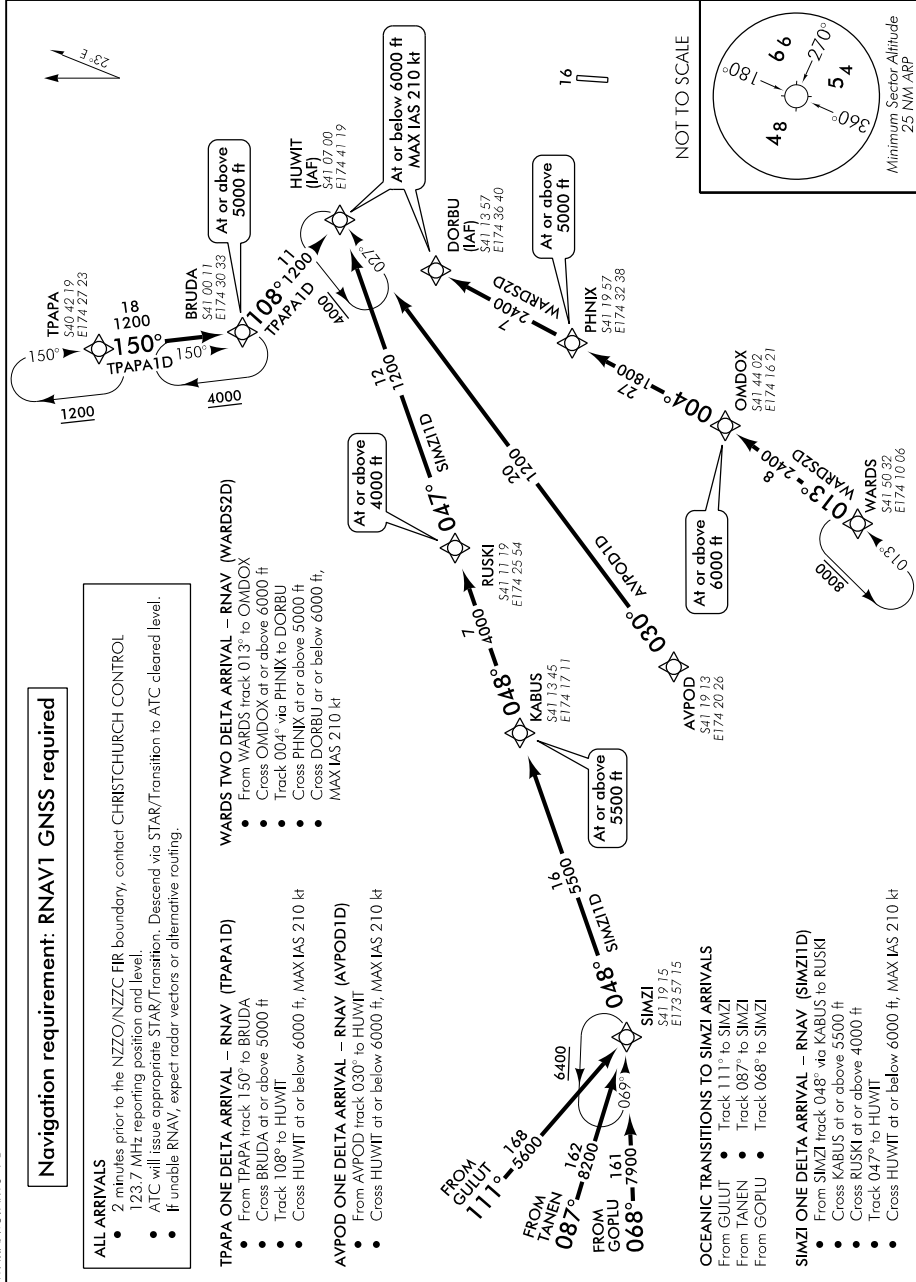
- From WARDS track 013° to OMDOX
- Cross OMDOX at or above 6000 ft
- Track 004° via PHNX to DORBU
- Cross PHNX at or above 5000 ft
- Cross DORBU at or below 6000 ft, MAX IAS 210 kt

OCEANIC TRANSITIONS TO SIMZI ARRIVALS

- From GULUT • Track 111° to SIMZI
- From TANEN • Track 087° to SIMZI
- From GOPLU • Track 068° to SIMZI

SIMZI ONE DELTA ARRIVAL - RNAV (SIMZI1D)

- From SIMZI track 048° via KABUS to RUSKI
- Cross KABUS at or above 5500 ft
- Cross RUSKI at or above 4000 ft
- Track 047° to HUWIT
- Cross HUWIT at or below 6000 ft, MAX IAS 210 kt



Changes from 7 NOV 19: ACFT category added to header.