

ELEV 41

NZWN

WELLINGTON RNAV STAR RWY 34 (1)

WELLINGTON CONTROL: 119.3 122.3 121.1

TOWER: 118.8 120.0

ATIS: 126.9

OCEANIC TRANSITIONS TO SIMZI ARRIVALS

From GULLT

- Track 111° to SIMZI

From TANEN

- Track 087° to SIMZI

From GOPLU

- Track 068° to SIMZI

ATC requirement:

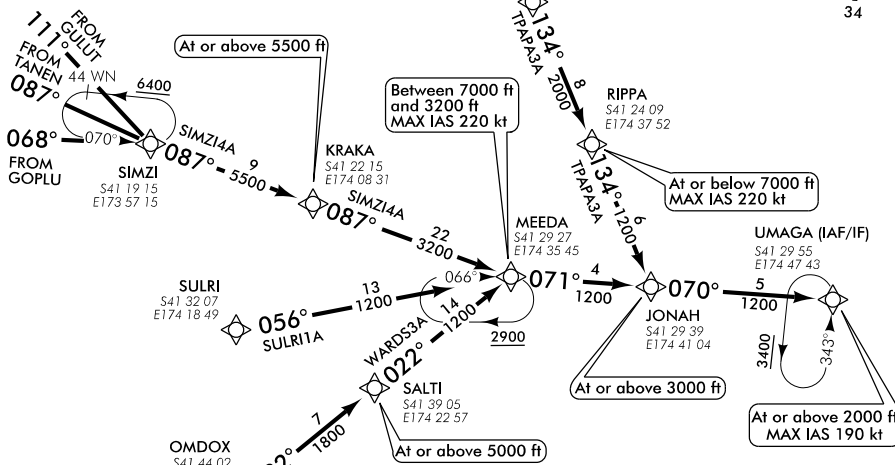
- Fly the arrival procedure applicable to the RWY in use as per Wellington ATIS
- At FIR boundary contact CHRISTCHURCH CONTROL 123.7 MHz reporting position, altitude and arrival procedure being flown

SIMZI FOUR ALFA ARRIVAL – RNAV (SIMZI4A)

- Track 087° to KRAKA
- Cross KRAKA 5500 ft or above
- Track 087° to MEEDA
- Cross MEEDA between 7000 ft and 3200 ft, MAX IAS 220 kt
- Track 071° to JONAH
- Cross JONAH 3000 ft or above
- Track 070° to UMAGA
- Cross UMAGA 2000 ft or above, MAX IAS 190 kt

SULRI ONE ALFA ARRIVAL – RNAV (SULRI1A)

- Track 056° to MEEDA
- Cross MEEDA between 7000 ft and 3200 ft, MAX IAS 220 kt
- Track 071° to JONAH
- Cross JONAH 3000 ft or above
- Track 070° to UMAGA
- Cross UMAGA 2000 ft or above, MAX IAS 190 kt



**Navigation requirement:
RNAV1 GNSS required**

ALL ARRIVALS

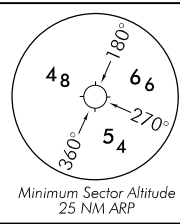
- Descend to ATC cleared level via published profile
- If unable RNAV, expect radar vectors or alternative routing

TPAPA THREE ALFA ARRIVAL – RNAV (TPAPA3A)

- Track 150° to FICAN
- Cross FICAN 5000 ft or above
- Track 150° to TURBY
- Track 134° to RIPPA
- Cross RIPPA 7000 ft or below, MAX IAS 220 kt
- Track 134° to JONAH
- Cross JONAH 3000 ft or above
- Track 070° to UMAGA
- Cross UMAGA 2000 ft or above, MAX IAS 190 kt

WNRNAVSTAR34-1-R

Changes from 25 MAY 17: WB6A arrival removed, SULRI1A added.



Effective: 9 NOV 17

ELEV 41

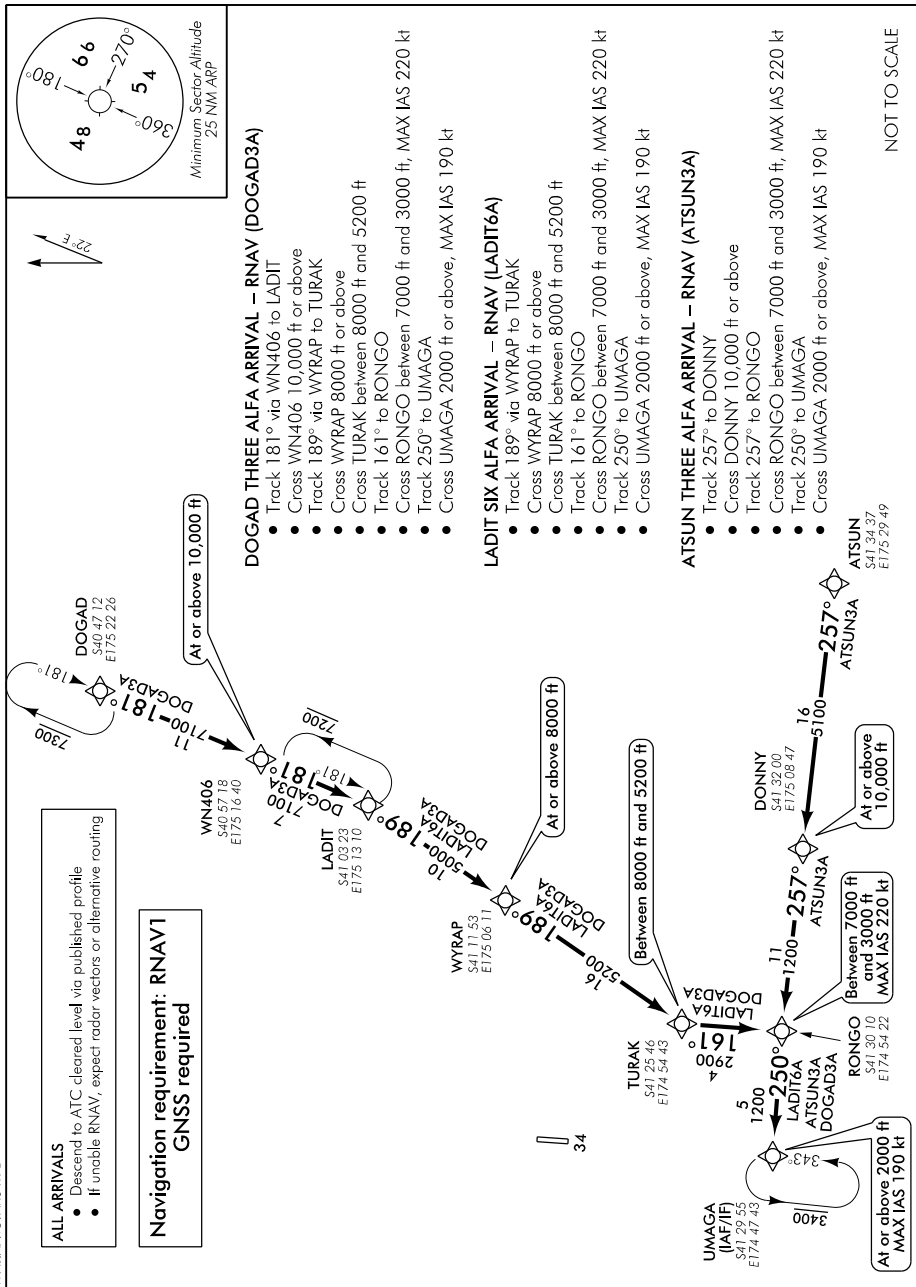
NZWN

WELLINGTON RNAV STAR RWY 34 (2)

WELLINGTON CONTROL: 119.3 122.3 121.1

TOWER: 118.8 120.0

ATIS: 126.9



Changes from 4 FEB 16: MNM SECT ALT, minor track changes, WYRAP to TURAK and TURAK to RONGO MSA.

WNRNAVSTAR34R-4