

ELEV 41

NZWN

WELLINGTON RNAV STAR RWY 34 (1)

WELLINGTON APPROACH: 119.3 122.3 121.1

TOWER: 118.8 125.25

ATIS: 126.9

OCEANIC TRANSITIONS TO SIMZI ARRIVALS

From GULLT

- Track 111° to SIMZI

From TANEN

- Track 087° to SIMZI

From GOPLU

- Track 068° to SIMZI

ATC requirement:

- Fly the arrival procedure applicable to the RWY in use as per Wellington ATIS
- At FIR boundary contact CHRISTCHURCH CONTROL 123.7 MHz reporting position, altitude and arrival procedure being flown

SIMZI FIVE ALFA ARRIVAL – RNAV (SIMZI5A)

- From SIMZI track 087° to KRAKA
- Cross KRAKA at or above 5500 ft
- Track 087° to MEEDA
- Cross MEEDA between 7000 ft and 3200 ft, MAX IAS 220 kt
- Track 070° via JONAH to UMAGA
- Cross JONAH at or above 3000 ft
- Cross UMAGA at or above 2000 ft, MAX IAS 190 kt

IGMUL ONE ALFA ARRIVAL – RNAV (IGMUL1A)

- From IGMUL track 082° to MEEDA
- Cross MEEDA between 7000 ft and 3200 ft, MAX IAS 220 kt
- Track 070° via JONAH to UMAGA
- Cross JONAH at or above 3000 ft
- Cross UMAGA at or above 2000 ft, MAX IAS 190 kt

SULRI TWO ALFA ARRIVAL – RNAV (SULRI2A)

- From SULRI track 056° to MEEDA
- Cross MEEDA between 7000 ft and 3200 ft, MAX IAS 220 kt
- Track 070° via JONAH to UMAGA
- Cross JONAH at or above 3000 ft
- Cross UMAGA at or above 2000 ft, MAX IAS 190 kt

WARDS FOUR ALFA ARRIVAL – RNAV (WARDS4A)

- From WARDS track 013° to OMDOX
- Cross OMDOX at or above 6000 ft
- Track 022° via SALT to MEEDA
- Cross SALT at or above 5000 ft
- Cross MEEDA between 7000 ft and 3200 ft, MAX IAS 220 kt
- Track 070° via JONAH to UMAGA
- Cross JONAH at or above 3000 ft
- Cross UMAGA at or above 2000 ft, MAX IAS 190 kt

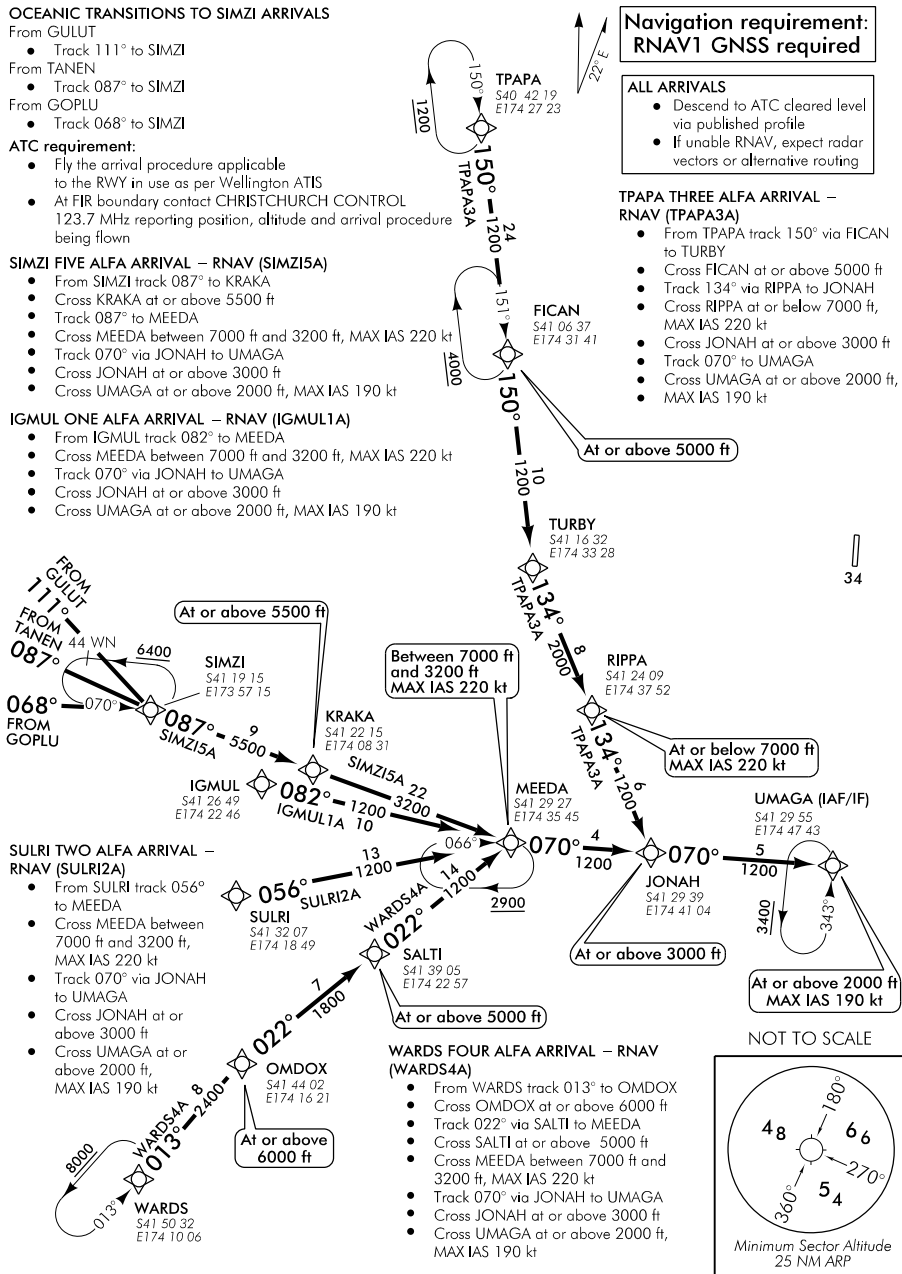
**Navigation requirement:
RNAV1 GNSS required**

ALL ARRIVALS

- Descend to ATC cleared level via published profile
- If unable RNAV, expect radar vectors or alternative routing

TPAPA THREE ALFA ARRIVAL – RNAV (TPAPA3A)

- From TPAPA track 150° via FICAN to TURBY
- Cross FICAN at or above 5000 ft
- Track 134° via RIPPA to JONAH
- Cross RIPPA at or below 7000 ft, MAX IAS 220 kt
- Cross JONAH at or above 3000 ft
- Track 070° to UMAGA
- Cross UMAGA at or above 2000 ft, MAX IAS 190 kt



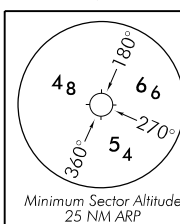
WINRANSTAR34-1-I

Changes from 29 MAR 18: Pagination, Tower secondary FREQ.

Effective: 19 JUL 18

© Civil Aviation Authority

WELLINGTON RNAV STAR RWY 34 (1)



ELEV 41

NZWN

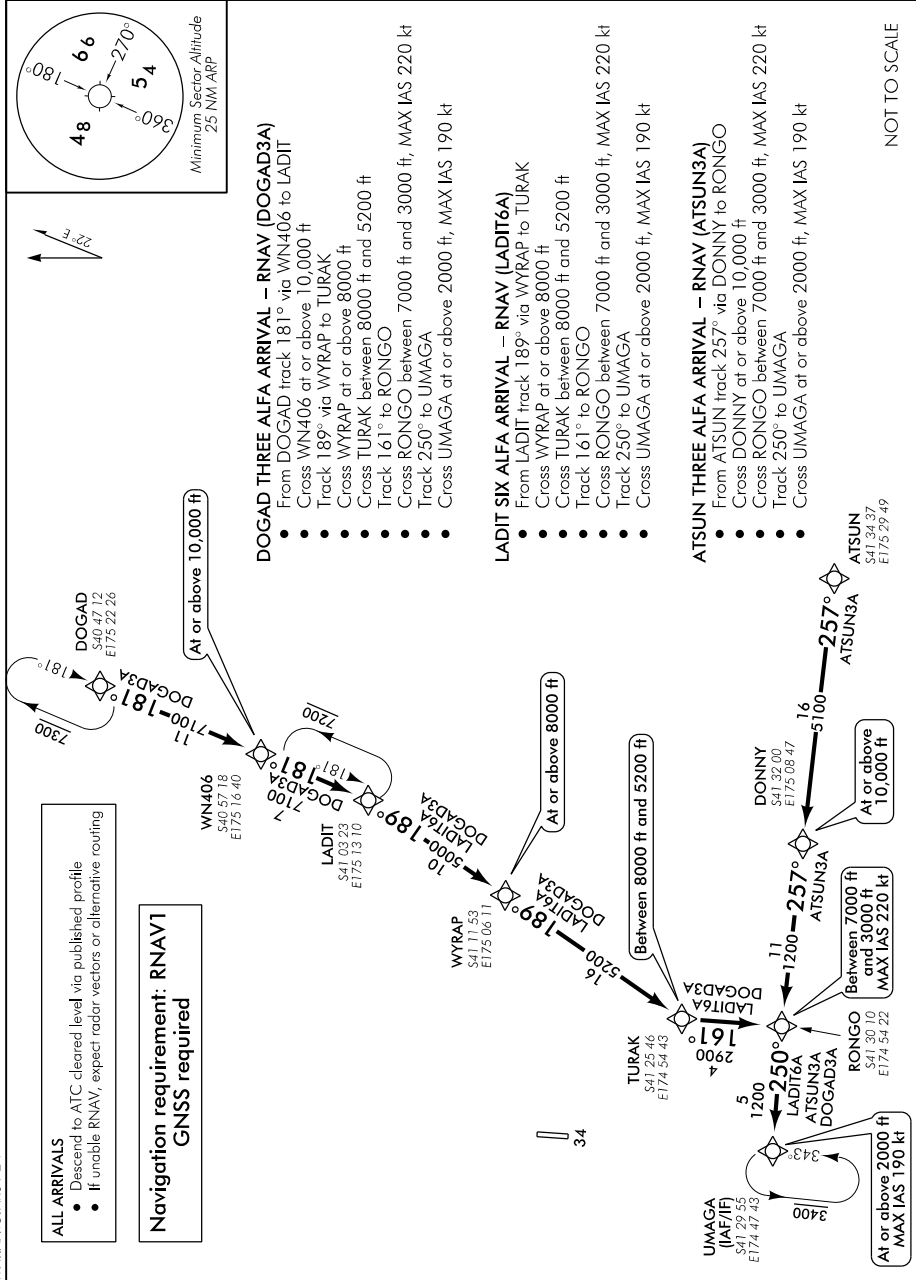
WELLINGTON

RNAV STAR RWY 34 (2)

WELLINGTON APPROACH: 119.3 122.3 121.1

TOWER: 118.8 125.25

ATIS: 126.9



WNRNAVSTAR34-2-N