

ELEV 41

NZWN

# WELLINGTON

## RNAV STAR RWY 34 (3)

WELLINGTON APPROACH: 119.3 122.3 121.1

TOWER: 118.8 125.25

ATIS: 126.9



### OCEANIC TRANSITIONS TO SIMZI ARRIVALS

- From GULUT • Track 111° to SIMZI
- From TANEN • Track 087° to SIMZI
- From GOPLU • Track 068° to SIMZI

### ATC Requirement

- Fly the arrival procedure applicable to the runway-in-use as per Wellington ATIS
- At FIR Boundary contact CHRISTCHURCH CONTROL 123.7 MHz reporting position, altitude and arrival procedure being flown

### TPAPA ONE CHARLIE ARRIVAL – RNAV (TPAPA1C)

- From TPAPA track 150° via FICAN to TURBY
- Cross FICAN at or above 5000 ft
- Track 134° to RIPPA
- Cross RIPPA between 7000 ft and 3000 ft, MAX IAS 210 kt

### SIMZI ONE CHARLIE ARRIVAL – RNAV (SIMZI1C)

- From SIMZI track 087° via KRAKA to MEEDA
- Cross KRAKA at or above 5500 ft
- Cross MEEDA between 7000 ft and 3200 ft, MAX IAS 210 kt

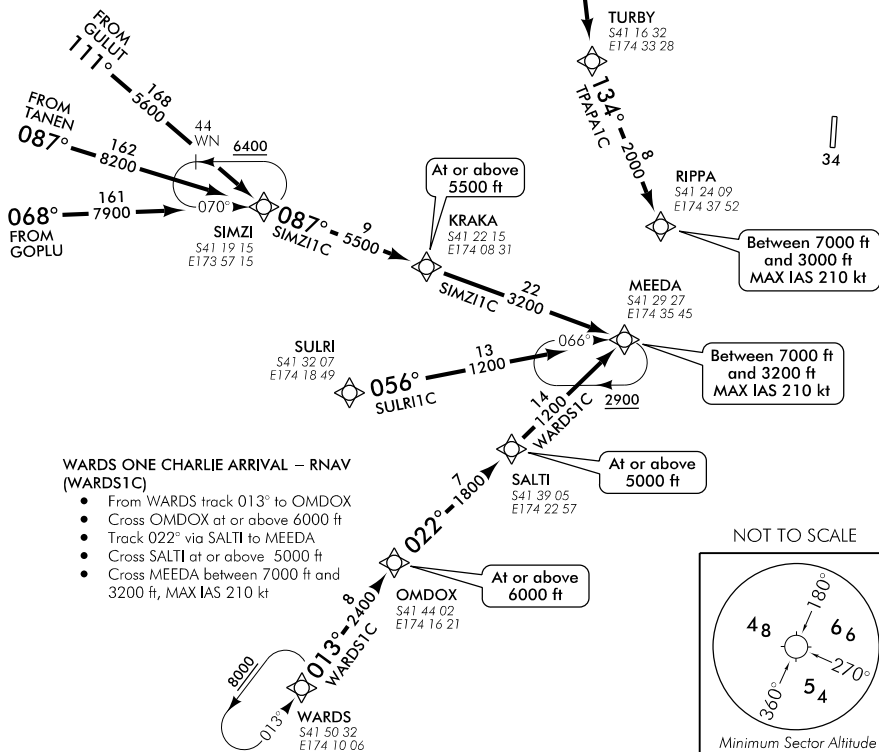
### SULRI ONE CHARLIE ARRIVAL – RNAV (SULRI1C)

- From SULRI track 056° to MEEDA
- Cross MEEDA between 7000 ft and 3200 ft, MAX IAS 210 kt

Navigation requirement:  
RNAV1 GNSS required

ALL ARRIVALS

- Descend to ATC cleared level via published profile
- If unable RNAV, expect radar vectors or alternative routing



WNRNAVSTAR34-3-B

Changes from 19 JUL 18: TPAPA1C text correction.

Effective: 8 NOV 18

