

ELEV 41

CAT A,B,C,D

WELLINGTON

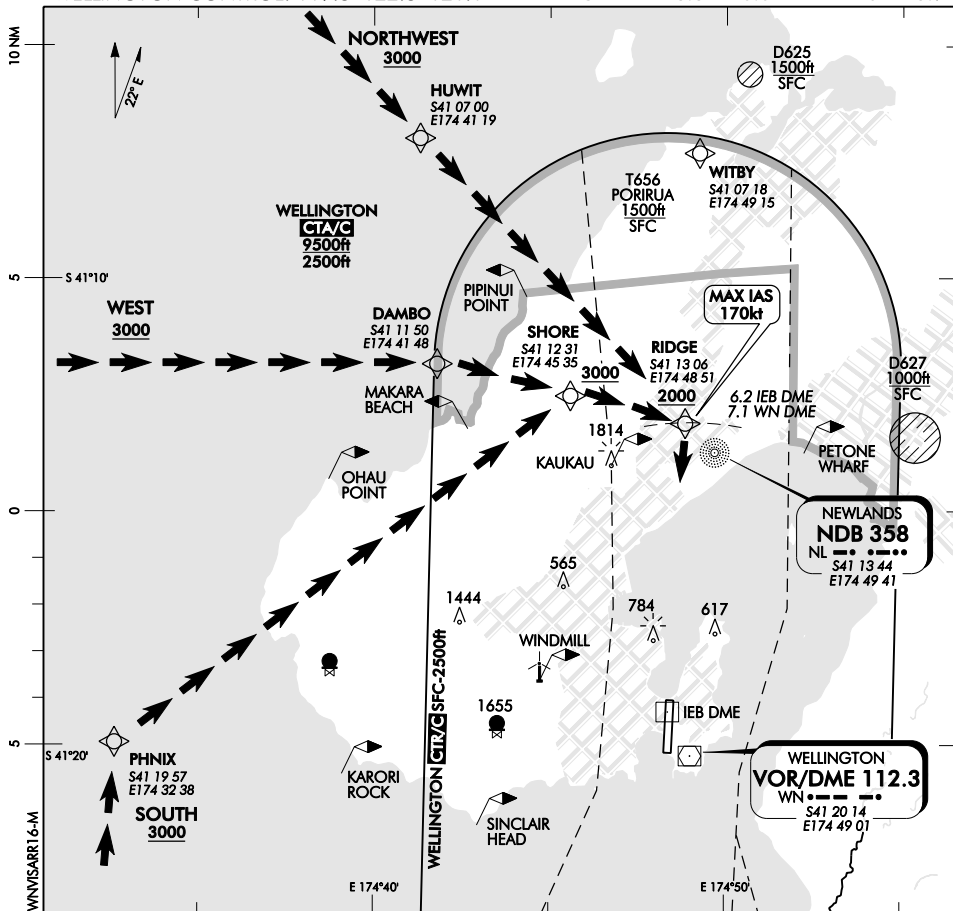
NZWN

RNAV VISUAL ARRIVALS RWY 16

WELLINGTON CONTROL: 119.3 122.3 121.1

TOWER: 118.8 120.0

ATIS: 126.9



NORTHWEST VISUAL ARRIVAL RWY 16

- 3000ft or above until established in Wellington CTR/C
- Track via HUWIT to RIDGE not below 2000ft
- Join final approach, not below 2000ft until passing RIDGE
- MAX IAS 170kt at 6NM from touchdown

WEST VISUAL ARRIVAL RWY 16

- Track via DAMBO to SHORE not below 3000ft
- Track from SHORE to RIDGE not below 2000ft
- Join final approach, not below 2000ft until passing RIDGE
- MAX IAS 170kt at 6NM from touchdown

SOUTH VISUAL ARRIVAL RWY 16

- Track via PHNIX to SHORE not below 3000ft
- Track from SHORE to RIDGE not below 2000ft
- Join final approach, not below 2000ft until passing RIDGE
- MAX IAS 170kt at 6NM from touchdown

Available by DAY only, aircraft must maintain continuous visual reference to the surface.

Altitude requirements may be amended by ATC
 Meteorological Minima: (Day) 3500 – 8 (Night) NA

Effective: 24 JUL 14

Changes from 14 NOV 13: Change in aerodrome elevation.

ELEV 41

CAT A,B,C,D

WELLINGTON

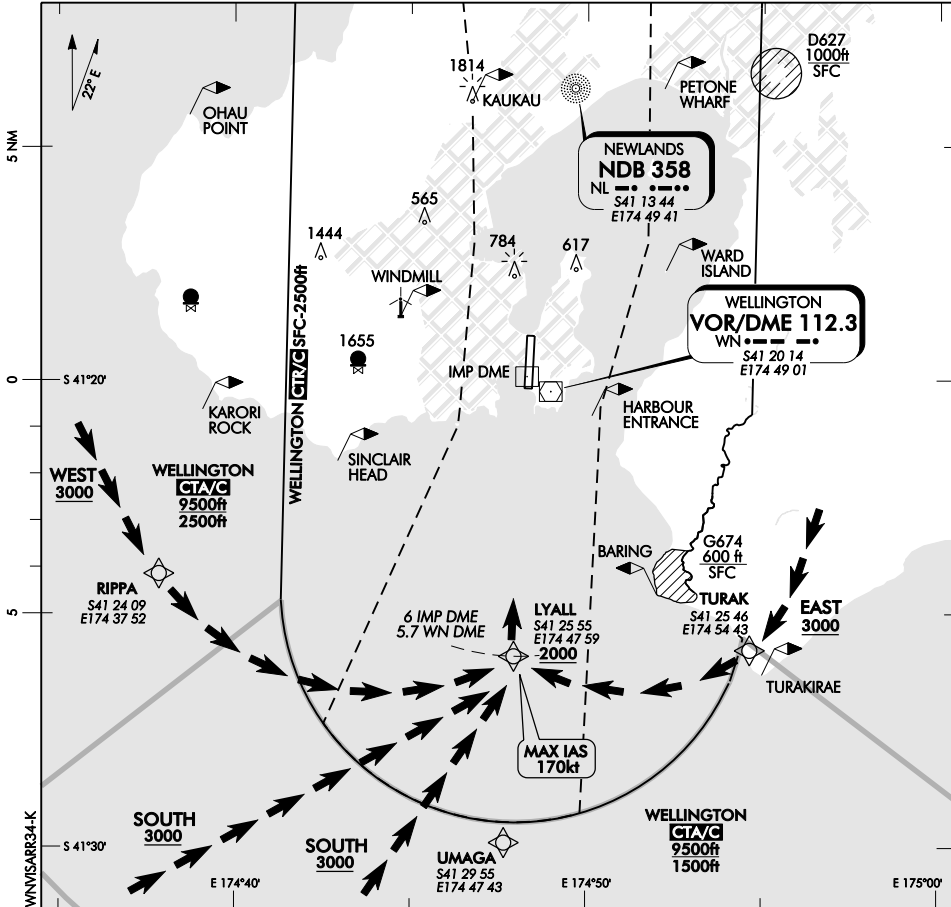
NZWN

RNAV VISUAL ARRIVALS RWY 34

WELLINGTON CONTROL: 119.3 122.3 121.1

TOWER: 118.8 120.0

ATIS: 126.9



Changes from 14 NOV 13: Change in aerodrome elevation.

WEST VISUAL ARRIVAL RWY 34

- 3000ft or above until established in Wellington CTR/C
- Track via RIPPA to LYALL
- Join final approach, not below 2000ft until passing LYALL
- MAX IAS 170kt at LYALL

SOUTH VISUAL ARRIVAL RWY 34

- 3000ft or above until established in Wellington CTR/C
- Track to LYALL not below 2000ft
- Join final approach, not below 2000ft until passing LYALL
- MAX IAS 170kt at LYALL

EAST VISUAL ARRIVAL RWY 34

- 3000ft or above until established in Wellington CTR/C
- Track via TURAK to LYALL not below 2000ft
- Join final approach, not below 2000ft until passing LYALL
- MAX IAS 170kt at LYALL

Available by DAY only, aircraft must maintain continuous visual reference to the surface.

Altitude requirements may be amended by ATC

Meteorological Minima: (Day) 3500 – 8 (Night) NA

Effective: 24 JUL 14

© Civil Aviation Authority

WELLINGTON
RNAV VISUAL ARRIVALS RWY 34