

ELEV 41

CAT A,B,C,D

WELLINGTON

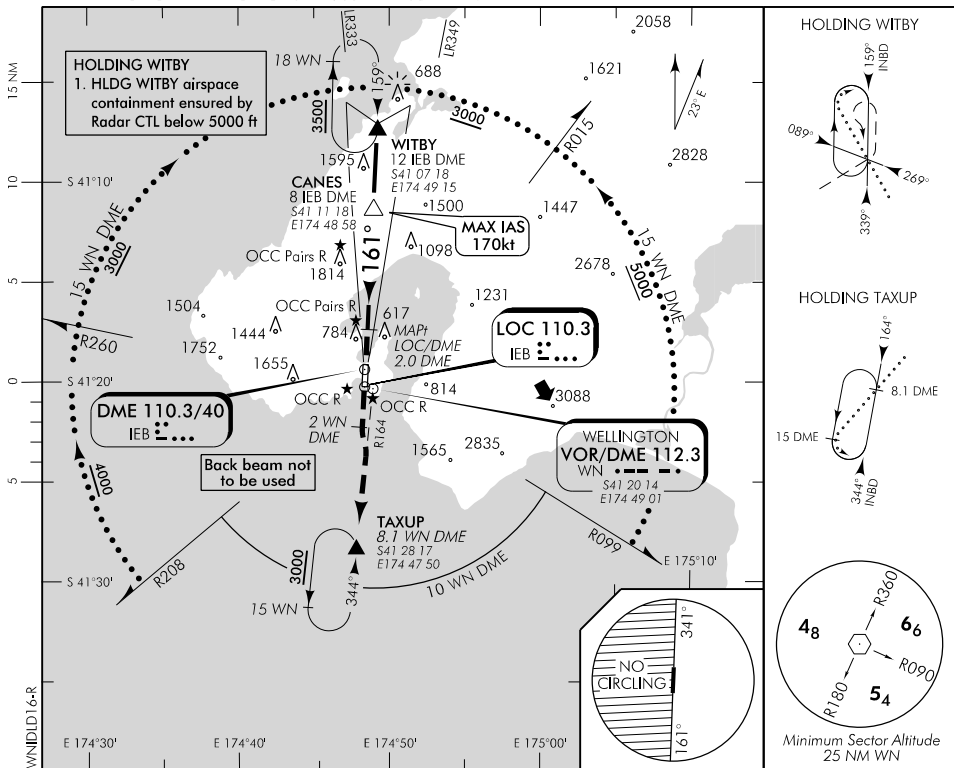
RWY 16 THR ELEV 41

ILS/DME or LOC/DME RWY 16

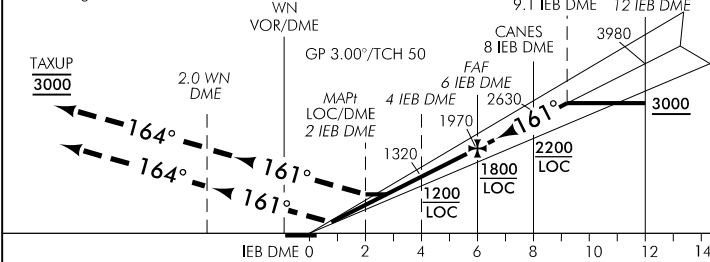
WELLINGTON APPROACH: 119.3 122.3 121.1

TOWER: 118.8 125.25

ATIS: 126.9



Use Wellington QNH



HLDG ACFT may descend to **3000** when established INBD for final APCH
 GP valid only when established within 10 IEB DME on LOC
CAUTION:
 Auto-coupling outside 10 IEB DME can produce anomalous climb behaviour
 Slight roughness between 8-3 IEB DME may affect auto-coupled approach

MISSED APCH: MAX IAS 185 kt. Track 161° to 2 WN DME, intercept R164 to TAXUP **3000**

IEB DME DIST	0.8	MAPt 2	2.7	3	4	5	6	7	8	9	10	
Advisory Altitude 3°	DA	MDA	MDA	990	1320	1640	1970	2300	2630	2970	3300	
Category	A		B			C		D				
ILS/DME	300(259) – 1500											
LOC/DME	900(859) – 4800											
Circling *	1000(959) – 5					1100(1059) – 5						NA

* Circling NA west of RWY 16/34. Also remain west of harbour eastern shoreline. Refer Noise Abatement Chart

Effective: 21 MAY 20

© Civil Aviation Authority

WELLINGTON
ILS/DME or LOC/DME RWY 16

Changes from 23 MAY 19: MAGVAR, mast relocated, WITBY holding note added.

ELEV 41

CAT A,B,C,D

WELLINGTON

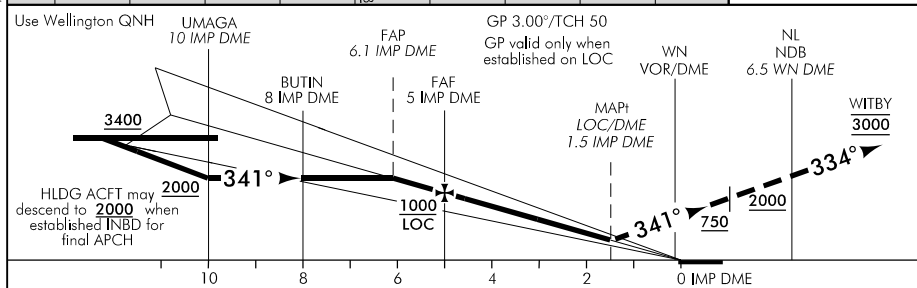
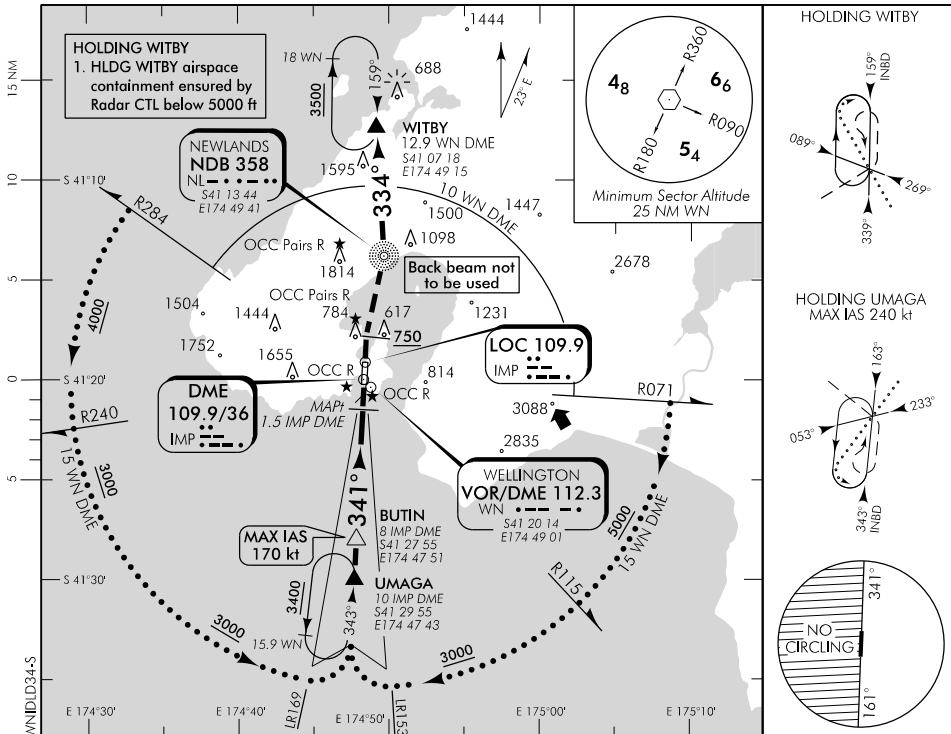
RWY 34 THR ELEV 24

ILS/DME or LOC/DME RWY 34

WELLINGTON APPROACH: 119.3 122.3 121.1

TOWER: 118.8 125.25

ATIS: 126.9



MISSED APCH: MAX IAS 185 kt. Track 341° to 750, turn RIGHT direct to NL NDB (R342/6.5 WN DME) 2000, turn LEFT track 334° to WITBY (R338/12.9 WN DME) 3000, expect radar control #

IMP DME DIST	10	9	8	7	6	5	4	3	2	1.6	MAP1.5	1.3
Advisory Altitude 3"	3280	2950	2620	2290	1960	1630	1300	980	660	MDA	MDA	DA
Category	A			B			C			D		
ILS/DME	450(426) - 2400									460(436) - 2400		
ILS/DME +	300(276) - 2000											
LOC/DME	540(516) - 2800											
Circling *	1000(959) - 5						1100(1059) - 5			NA		

* Circling NA west of RWY 16/34. Also remain west of harbour eastern shoreline. Refer Noise Abatement Chart
When Wellington Control not available mandatory 3500 ft applies at WITBY
+ Requires 4% (250 ft/NM) missed APCH climb gradient

Changes from 23 MAY 19: MAGVAR, mast relocated, WITBY holding note added, missed APCH track.

Effective: 21 MAY 20