

ELEV 41

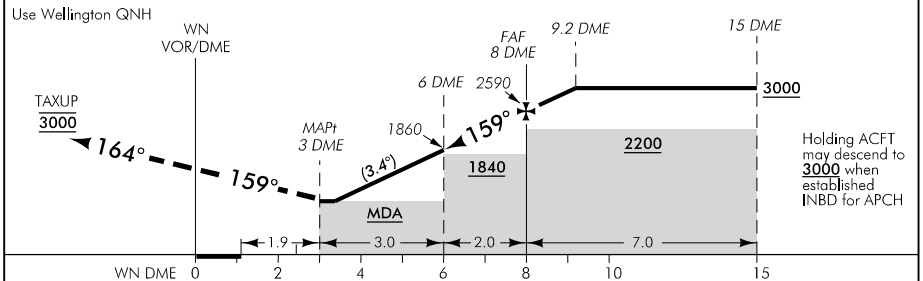
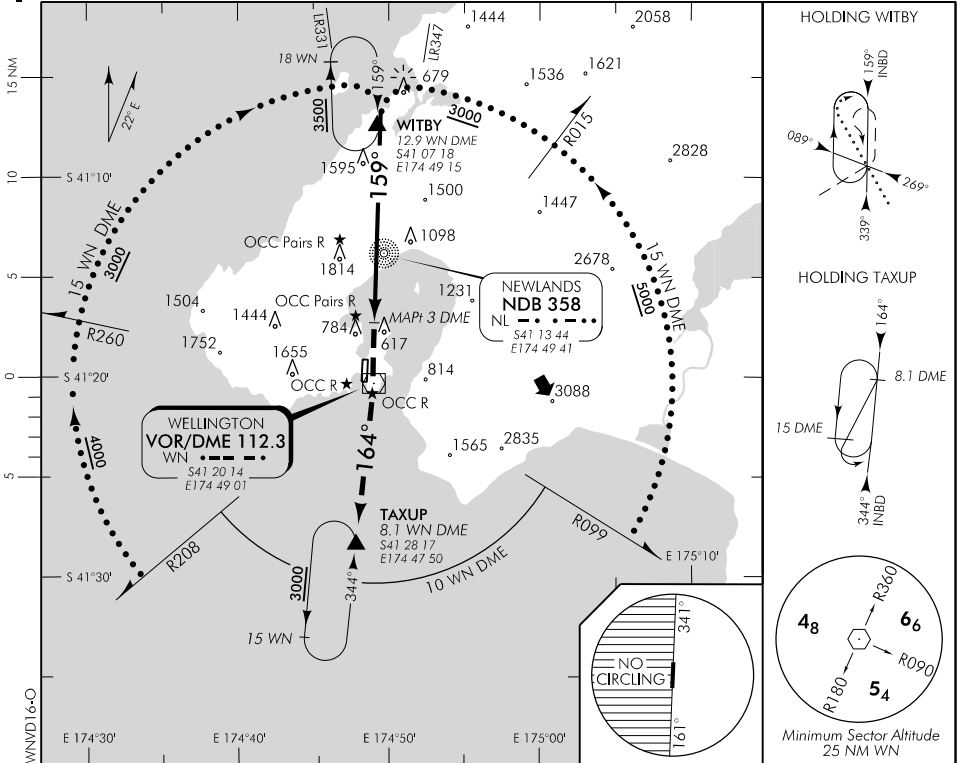
CAT A,B,C,D

WELLINGTON

RWY 16 THR ELEV 41

VOR/DME RWY 16

WELLINGTON APPROACH: 119.3 122.3 121.1 TOWER: 118.8 120.0 ATIS: 126.9



MISSED APCH: MAX IAS 185 kt. Track 159° to WN VOR, turn RIGHT track R164 to TAXUP **3000**

WN DME DIST	MAPt 3	3.4	4	5	6	7	8	9	9.2
Advisory Altitude 5.9%	MDA	MDA	1140	1500	1860	2230	2590	2950	3000
Category	A		B			C		D	
VOR/DME#	930(889) - 5								
Circling *	1000(959) - 5				1100(1059) - 5			NA	

Non-compliant with ICAO PANS-OPS straight-in criteria; FNA TR diverging FM RWY extended CL, at MAPt (3 DME) offset 770 m.
 * Circling NA west of RWY 16/34. Also remain west of harbour eastern shoreline. Refer Noise Abatement Chart.

Effective: 24 MAY 18

Changes from 10 NOV 16: Missed approach updated, COM header ATC callsign.

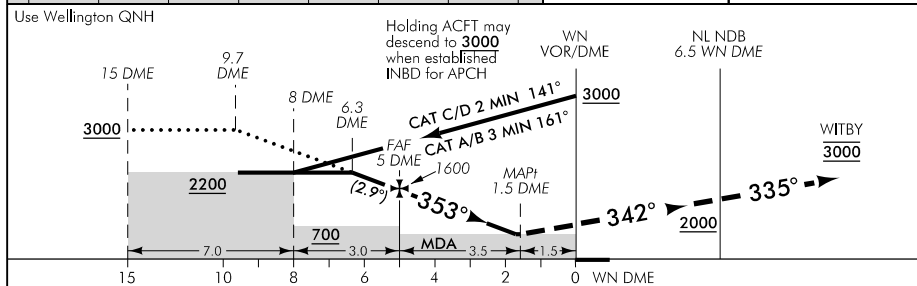
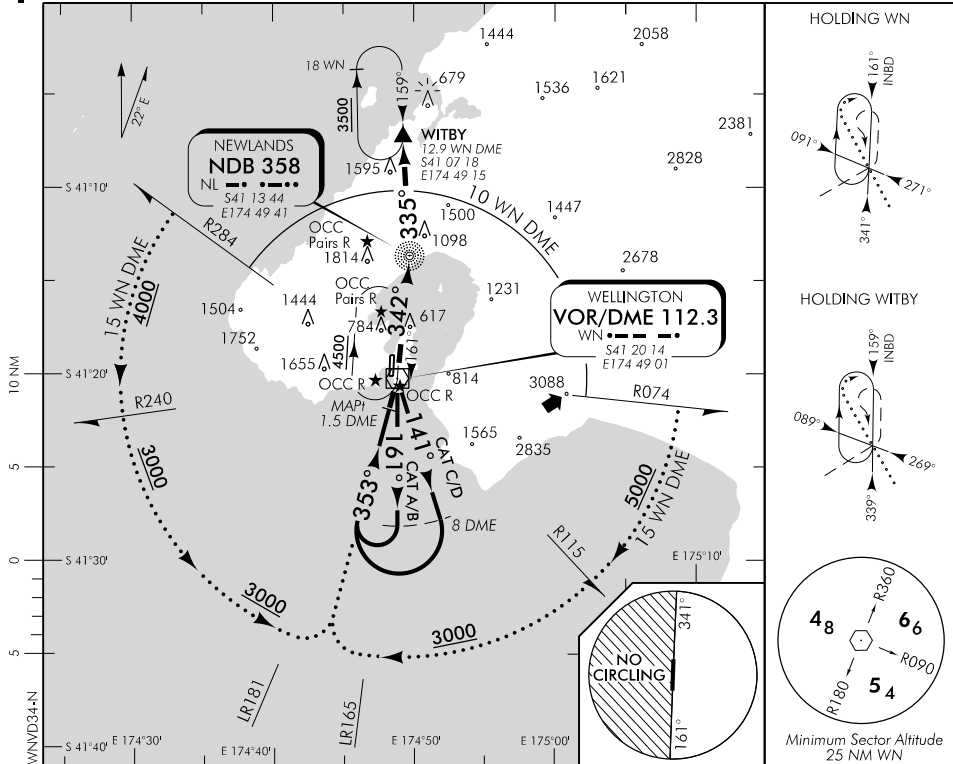
ELEV 41

CAT A,B,C,D

RWY 34 THR ELEV 24

WELLINGTON
VOR/DME RWY 34

WELLINGTON APPROACH: 119.3 122.3 121.1 TOWER: 118.8 120.0 ATIS: 126.9



MISSED APCH: MAX IAS 185kt. Track 353° to WN VOR, turn LEFT track 342° to NL NDB (R342/6.5 WN DME) **2000**, turn LEFT track 335° to WITBY **3000**, expect RADAR control #

WN DME DIST	9.7	9	8	7	6	5	4	3	2	1.7	MAPt 1.5
Advisory Altitude 5%	3000	2800	2500	2200	1900	1600	1300	1000	700	MDA	MDA
Category	A			B			C		D		
VOR/DME	620(596) - 1500						620(596) - 2000				
Circling *	1000(959) - 5						1100(1059) - 5		NA		

* Circling NA west of RWY 16/34. Also remain west of harbour eastern shoreline.
Refer Noise Abatement Chart.
When Wellington Control not available mandatory 3500 ft applies at WITBY.

Changes from 10 NOV 16: COM header/ATC callsign.

Effective: 24 MAY 18