

ELEV 41

CAT A,B,C,D

WELLINGTON

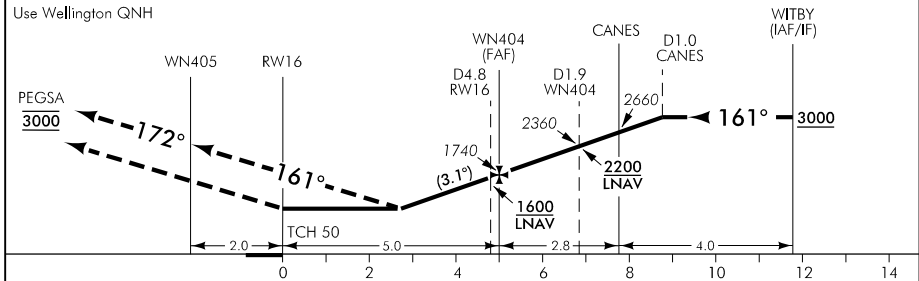
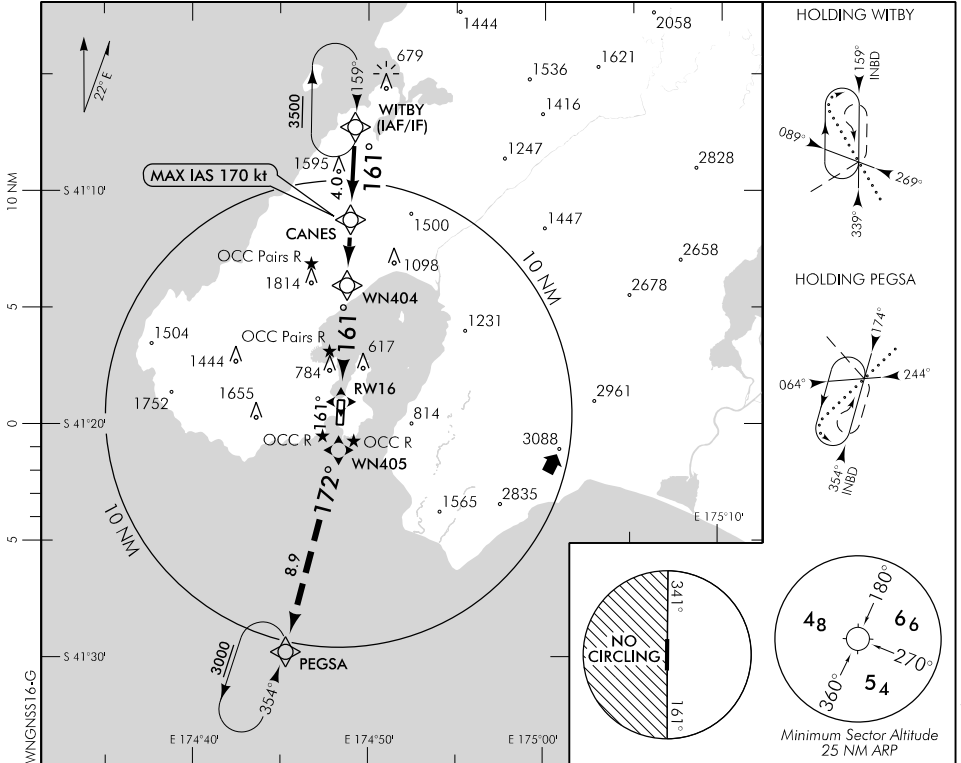
RWY 16 THR ELEV 41

RNAV (GNSS) RWY 16

WELLINGTON CONTROL: 119.3 122.3 121.1

TOWER: 118.8 120.0

ATIS: 126.9



MISSED APCH: MAX IAS 185 kt. Track 161° to WN405 (fly-over) turn RIGHT direct to PEGSA 3000

DISTANCE TO WPT	RW16	2.8	3	4	WN404	1	2	CANES	1	2	3	WITBY
Advisory Altitude 5.4%	MDA	DA/MDA	1080	1410	1740	2070	2400	2660	2990	3320	3650	3980
Category	A			B			C			D		
LNAV	1000(959) - 5											
LNAV/VNAV *	1000(959) - 5											
Circling #	1000(959) - 5						1100(1059) - 5			NA		

* Valid to AD temperature -5°C, use of remote QNH NA
 # Circling NA west of RWY 16/34. Also remain west of harbour eastern shoreline. Refer Noise Abatement Chart.

Effective: 10 NOV 16

Changes from 31 MAR 16: Trahi Bay most update.

