

ELEV 41

CAT A,B,C,D

WELLINGTON

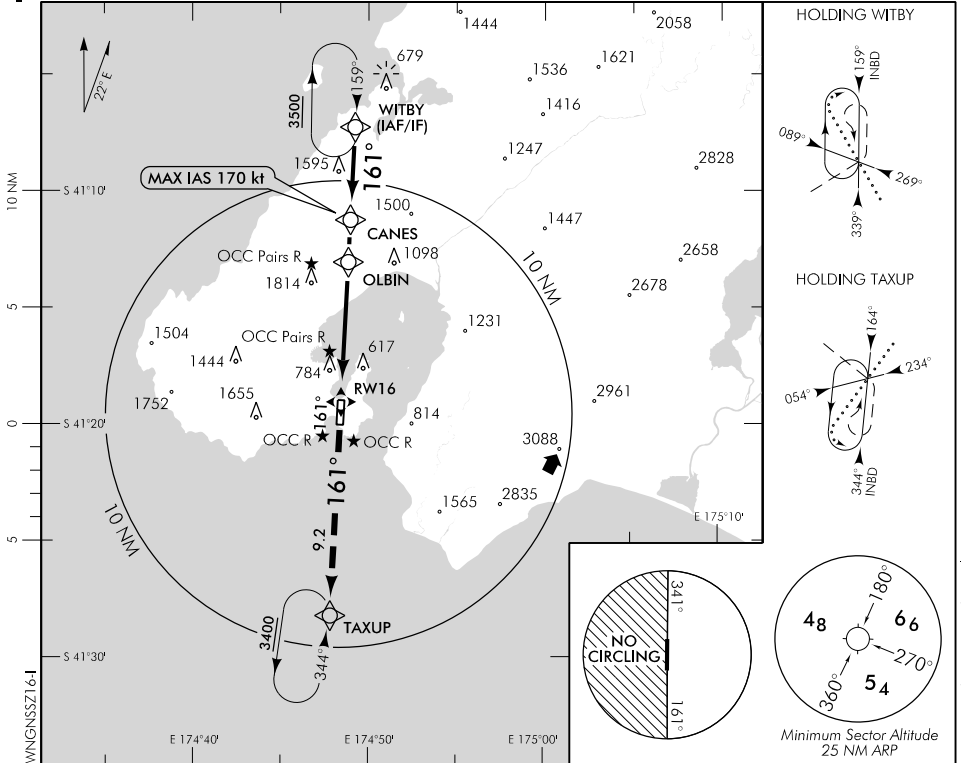
RWY 16 THR ELEV 41

RNAV (GNSS) Z RWY 16

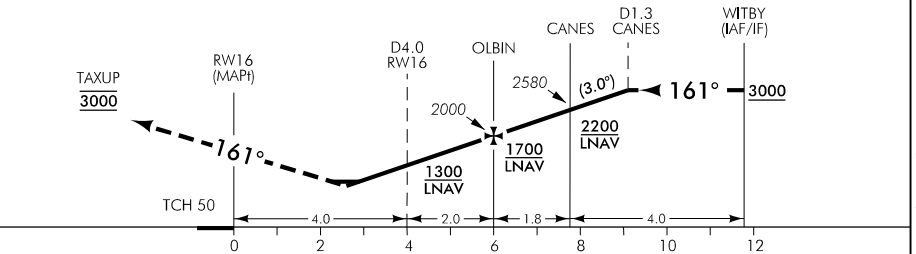
WELLINGTON APPROACH: 119.3 122.3 121.1

TOWER: 118.8 125.25

ATIS: 126.9



Use Wellington QNH



MISSED APCH: MAX IAS 185 kt. Track 161° to TAXUP 3000, expect radar control +

DISTANCE to WPT	RWY16	2.6	2.9	3	4	5	OLBIN	1	CANES	1	2	3	WITBY
Advisory Altitude 3°	MDA	DA	MDA	1050	1360	1680	2000	2320	2580	2900	3220	3540	3850
Category	A			B			C			D			
LNAV	1000(959) - 5												
LNAV/VNAV *	910(869) - 5						930(889) - 5						
Circling #	1000(959) - 5						1100(1059) - 5			NA			

* Valid to AD temperature -5°C, use of remote QNH NA

Circling NA west of RWY 16/34. Also remain west of harbour eastern shoreline. Refer Noise Abatement Chart.

+ When Wellington Approach not available mandatory 3400 ft applies at TAXUP

Changes from 24 MAY 18: MA text, Tower secondary FREQ, chart title.

Effective: 19 JUL 18

ELEV 41

CAT B,C,D

WELLINGTON

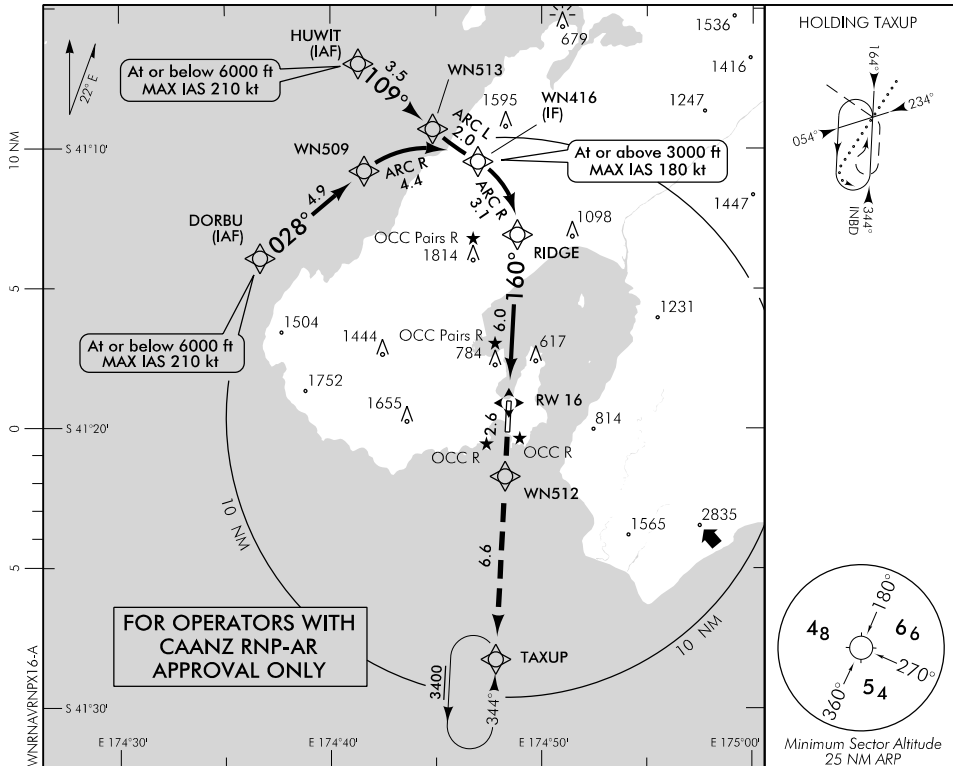
RWY 16 THR ELEV 41

RNAV (RNP) X RWY 16

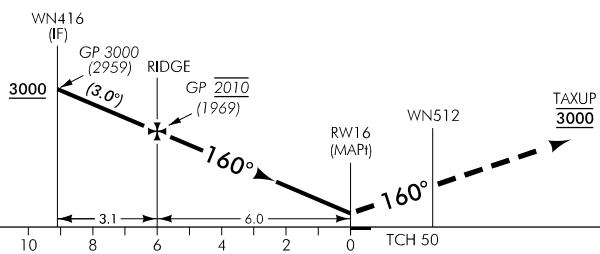
WELLINGTON APPROACH: 119.3 122.3 121.1

TOWER: 118.8 125.25

ATIS: 126.9



Use Wellington QNH only



New chart.

MISSED APCH: MAX IAS 185 kt. Track via the RNAV (RNP) Missed Approach to TAXUP 3000, expect radar control *

Category	A	B	C	D
RNP 0.1	NA	NA	410(369) – 2000	
RNP 0.2			650(609) – 3600	
RNP 0.3			930(889) – 5	

Procedure NA when AD temperature is below -5°C or above 47°C
 RF required
 Maintain approach RNP value until WN512, then RNP 1.0
 * When Wellington Approach not available mandatory 3400 ft applies at TAXUP

Effective: 19 JUL 18