

ELEV 41

CAT A,B,C,D

# WELLINGTON

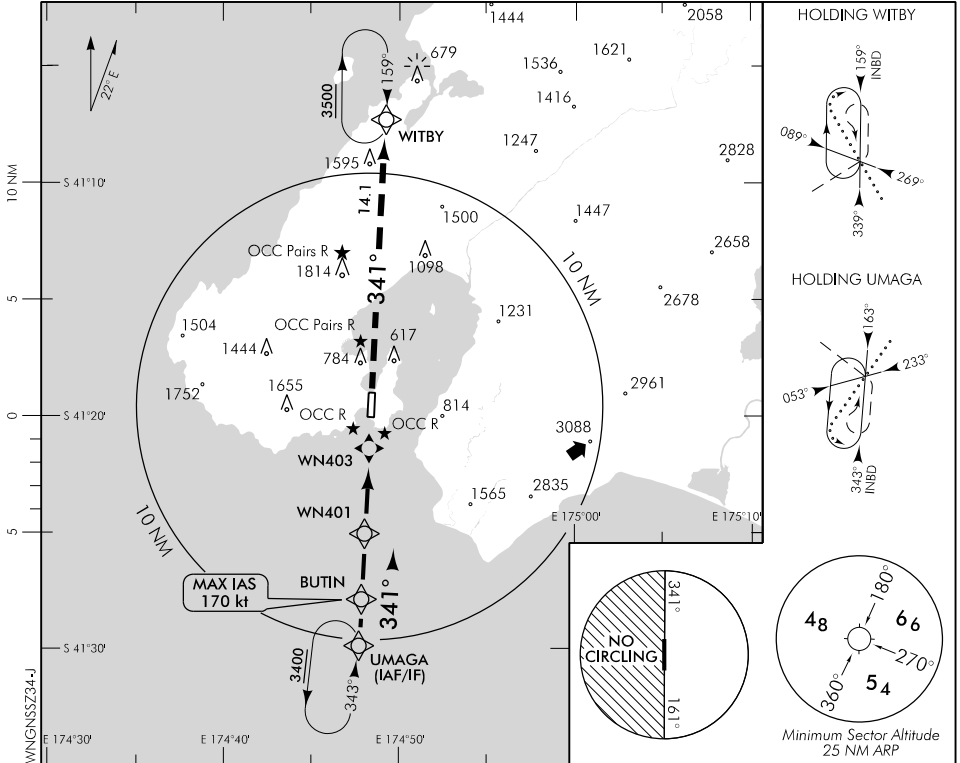
RWY 34 THR ELEV 24

RNAV (GNSS) Z RWY 34

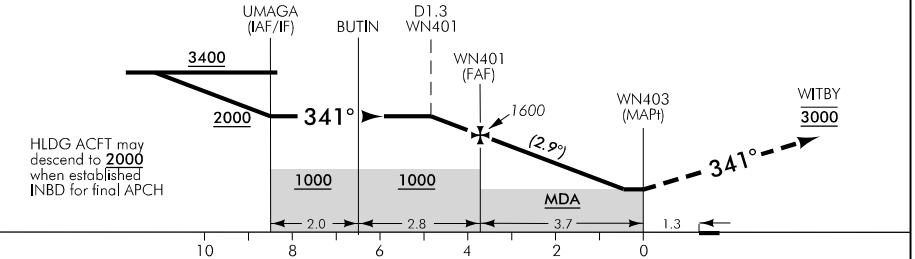
WELLINGTON CONTROL: 119.3 122.3 121.1

TOWER: 118.8 120.0

ATIS: 126.9



Use Wellington QNH



MISSED APCH: MAX IAS 185 kt. Climb on 341° to WITBY 3000, expect radar control<sup>+</sup>

DISTANCE to WPT	UMAGA	1	BUTIN	2	1	WN401	3	2	1	0.6	WN403
Advisory Altitude 5%	3050	2750	2450	2200	1900	1600	1400	1100	800	670	MDA
Category	A		B			C		D			
LNAV	940(916) - 3000					940(916) - 4800					
LNAV *	670(646) - 2500					670(646) - 3600					
Circling #	1000(959) - 5					1100(1059) - 5		NA			

\* Requires 4.3% (260 ft/NM) missed apch climb gradient.  
 # Circling NA west of RWY 16/34. Also remain west of harbour eastern shoreline.  
 Refer Noise Abatement Chart.  
 + When Wellington Control not available mandatory 3500 ft applies at WITBY

**Effective: 10 NOV 16**

Changes from 31 MAR 16: Triah Bay most update.

ELEV 41

CAT A,B,C,D

# WELLINGTON

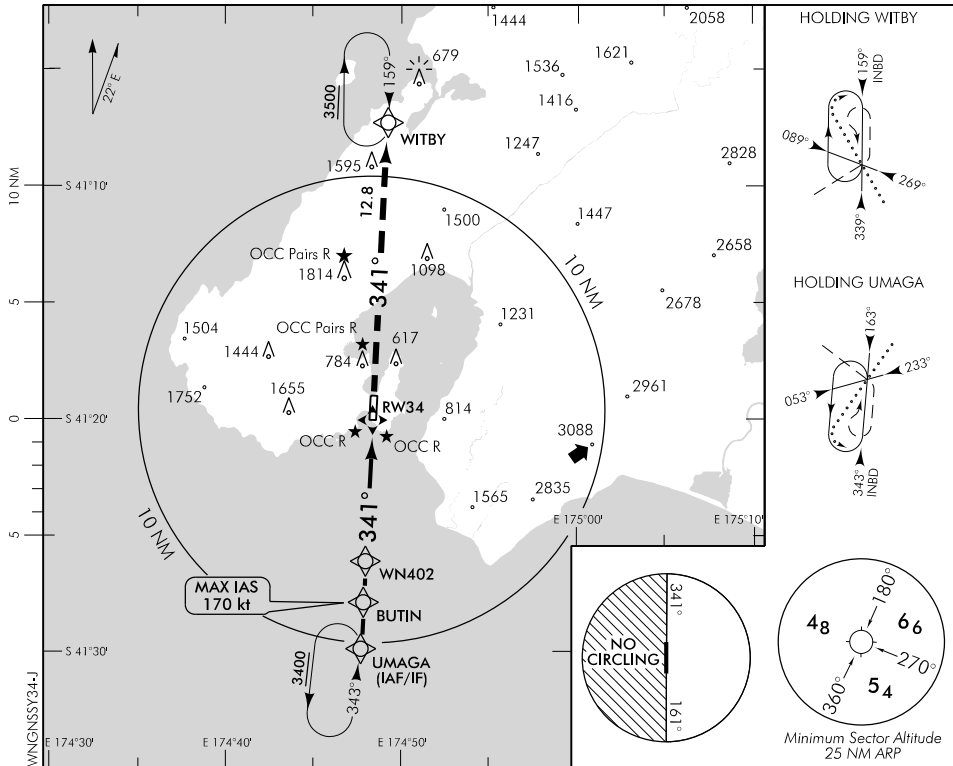
RWY 34 THR ELEV 24

**RNAV (GNSS) Y RWY 34**

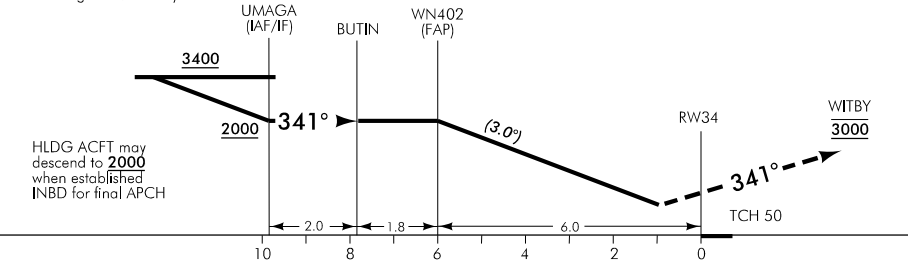
WELLINGTON CONTROL: 119.3 122.3 121.1

TOWER: 118.8 120.0

ATIS: 126.9



Use Wellington QNH only



**MISSED APCH:** MAX IAS 185 kt. Climb on 341° to WITBY 3000, expect radar control<sup>+</sup>

Category	A	B	C	D
LNAV/VNAV	780(756) – 3000		830(806) – 4400	
LNAV/VNAV *	670(646) – 2500		670(646) – 3600	
Circling #	1000(959) – 5		1100(1059) – 5	
			NA	

- Valid to AD temperature -5°C
- \* Requires 4.0% (250 ft/NM) missed apch climb gradient.
- # Circling NA west of RWY 16/34. Also remain west of harbour eastern shoreline.
- Refer Noise Abatement Chart.
- + When Wellington Control not available mandatory 3500 ft applies at WITBY

Changes from 31 MAR 16: Titahi Bay msat update.

**Effective: 10 NOV 16**