

ELEV 41

CAT A,B,C,D

# WELLINGTON

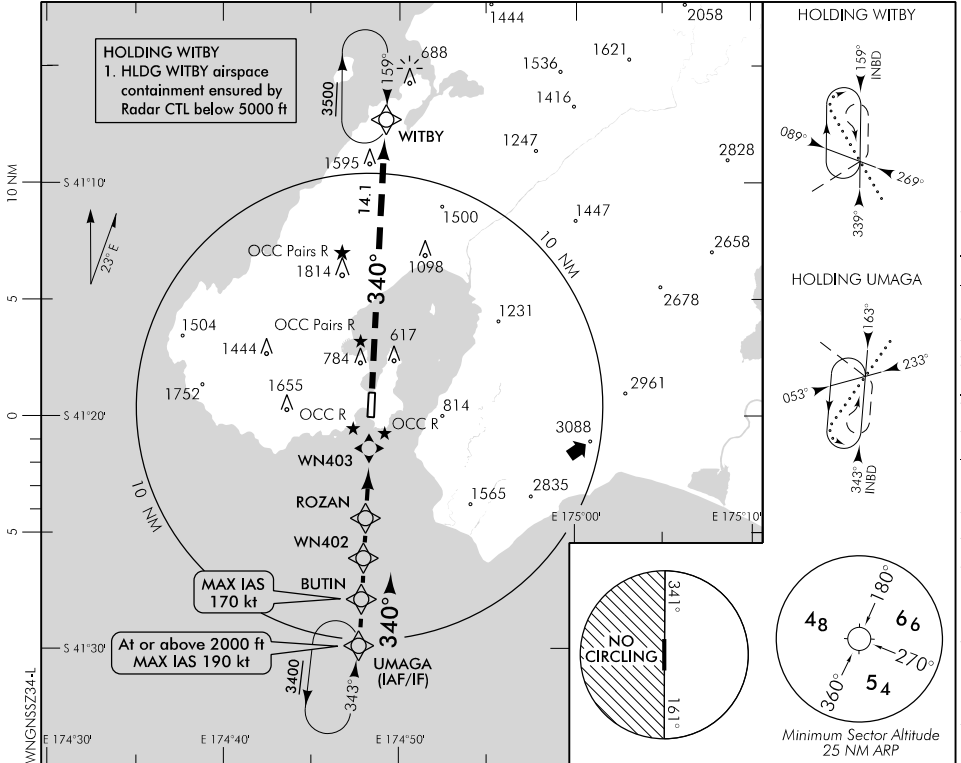
RWY 34 THR ELEV 24

RNAV (GNSS) Z RWY 34

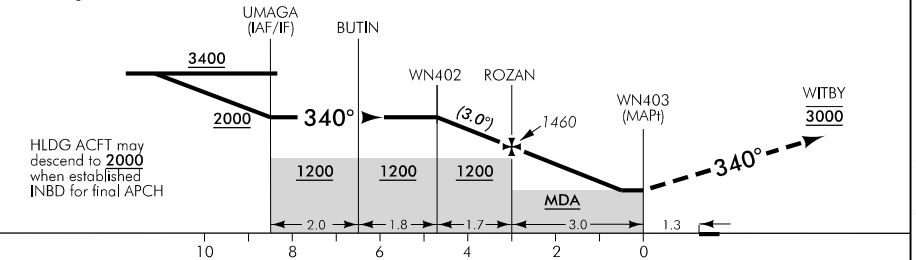
WELLINGTON APPROACH: 119.3 122.3 121.1

TOWER: 118.8 125.25

ATIS: 126.9



Use Wellington QNH



MISSED APCH: MAX IAS 185 kt. Climb on 340° to WITBY 3000, expect radar control <sup>+</sup>

DISTANCE to WPT	UMAGA	1	BUTIN	1	WN402	1	ROZAN	2	1	0.5	WN403
Advisory Altitude 3°	3200	2880	2560	2320	2000	1770	1460	1140	820	MDA	MDA
Category	A			B			C		D		
LNAV	940(916) – 3000						940(916) – 4800				
LNAV *	670(646) – 2500						670(646) – 3600				
Circling #	1000(959) – 5						1100(1059) – 5		NA		

\* Requires 4.3% (270 ft/NM) missed apch climb gradient.

# Circling NA west of RWY 16/34. Also remain west of harbour eastern shoreline. Refer Noise Abatement Chart.

+ When Wellington Control not available mandatory 3500 ft applies at WITBY

Changes from 19 JUL 18: MAGVAR, procedure reviewed, WPTs updated, advisory altitude table added, obstacle relocated, WITBY HLDG note.

**Effective: 21 MAY 20**

ELEV 41

CAT A,B,C,D

RWY 34 THR ELEV 24

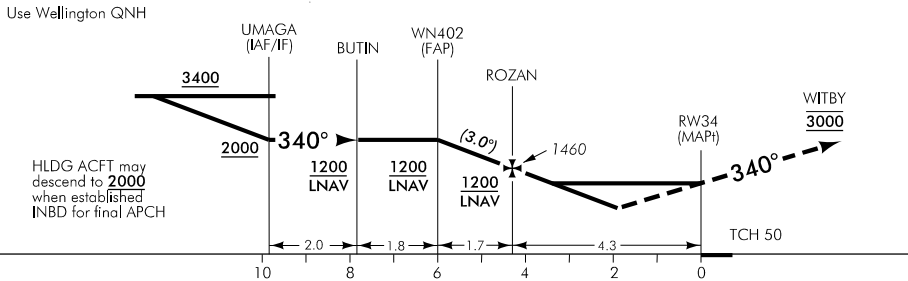
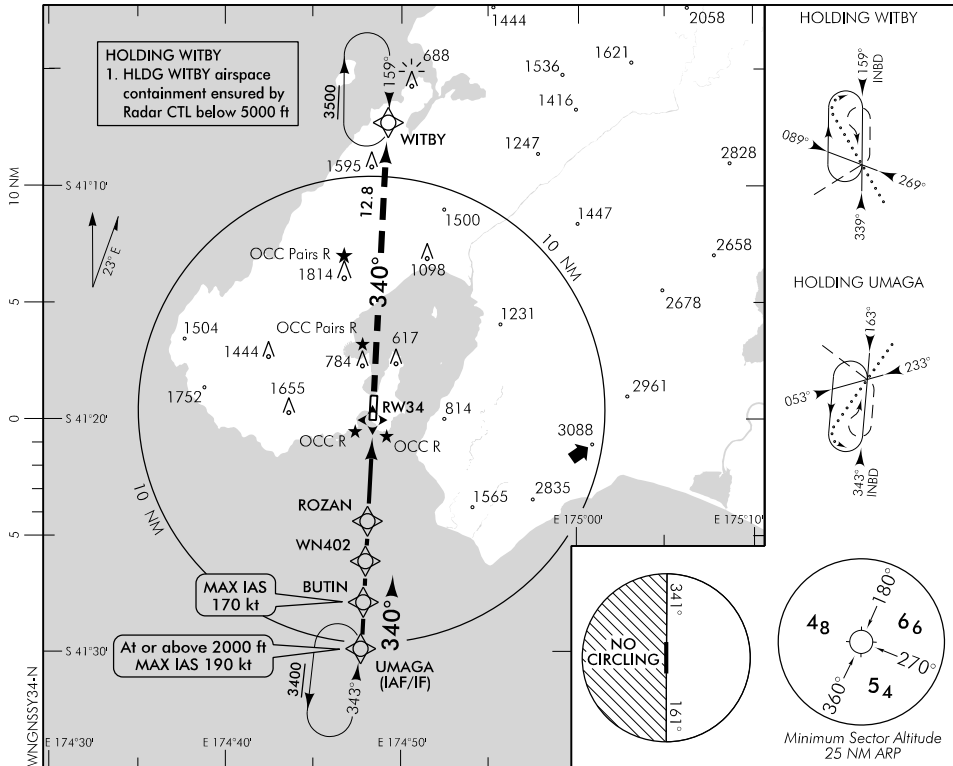
**WELLINGTON**

**RNAV (GNSS) Y RWY 34**

WELLINGTON APPROACH: 119.3 122.3 121.1

TOWER: 118.8 125.25

ATIS: 126.9



MISSED APCH: MAXIAS 185 kt. Climb on 340° to WITBY 3000, expect radar control <sup>†</sup>

DISTANCE to WPT	UMAGA	1	BUTIN	1	WN402	1	ROZAN	3.4	3	2	1.9	RW34
Advisory Altitude 3°	3200	2880	2560	2320	2000	1770	1460	MDA	MDA	MDA	DA	MDA
Category	A			B			C			D		
LNAV/VNAV =	780(756) – 3000						830(806) – 4400					
LNAV/VNAV * =	610(586) – 2000						610(586) – 3200					
LNAV	1150(1126) – 3000						1150(1126) – 4400					
Circling #	1150(1109) – 5									NA		

= Valid to AD temperature -5°C, use of remote QNH NA.  
 \* Requires 3.8% (240 ft/NM) missed apch climb gradient.  
 # Circling NA west of RWY 16/34. Also remain west of harbour eastern shoreline. Refer Noise Abatement Chart.  
 † When Wellington Approach not available mandatory 3500 ft applies at WITBY

Changes from 16 JUL 20: Use of remote QNH notes amended.

**Effective: 10 SEP 20**