

ELEV 41

CAT B,C,D

**WELLINGTON**

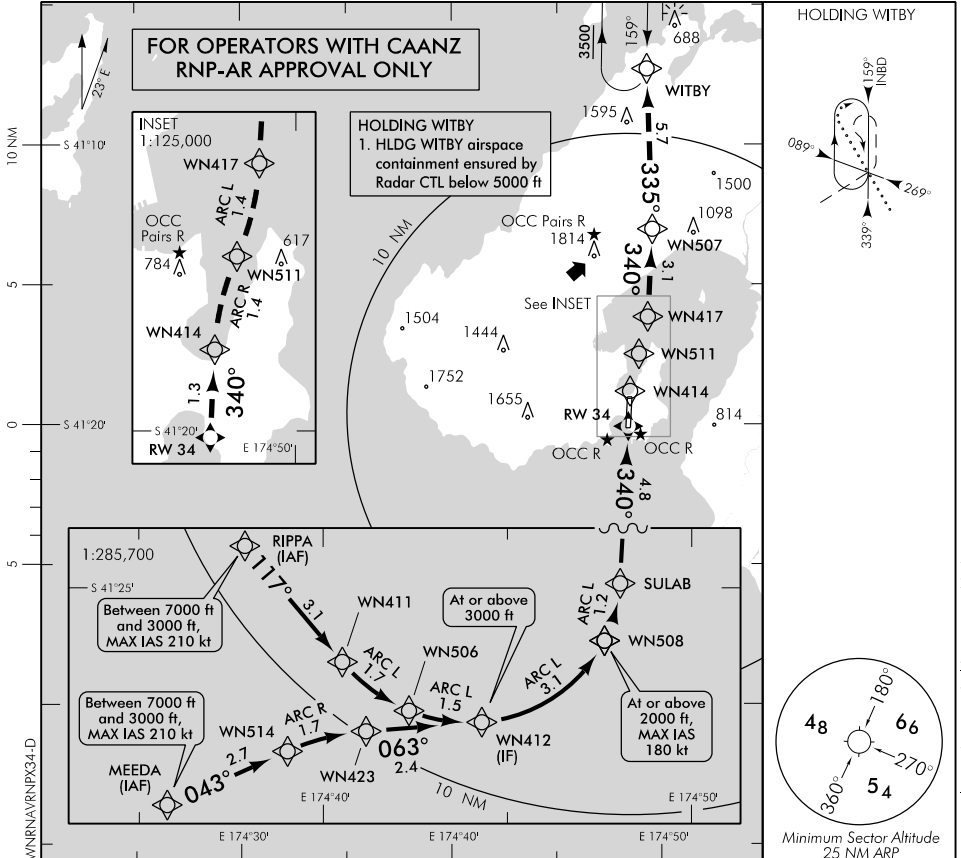
RWY 34 THR ELEV 24

**RNAV (RNP) X RWY 34**

WELLINGTON APPROACH: 119.3 122.3 121.1

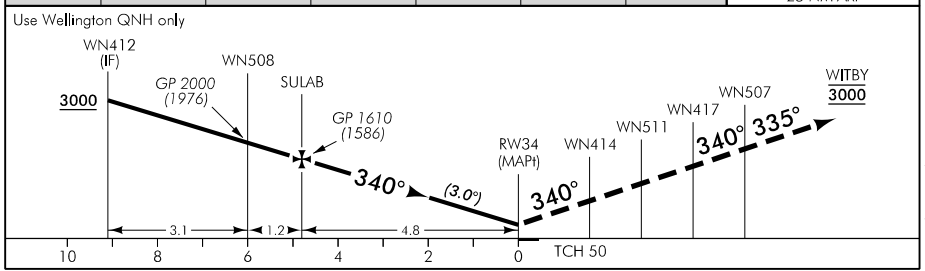
TOWER: 118.8 125.25

ATIS: 126.9



WNNRVRNP34-D

Changes from 12 SEP 19: IMAGVAR, mast relocated, WITBY holding note added.



**MISSED APCH:** MAX IAS 185 KT. Track via the RNAV (RNP) Missed Approach to WITBY 3000, expect radar control \*

Category	A	B	C	D
RNP 0.1	NA	NA	470(446) – 2400	
RNP 0.2			550(526) – 3200	
RNP 0.3			560(536) – 2000	580(556) – 3200

1. Procedure NA when AD temperature is below -5°C or above 47°C
  2. RF required
  3. RNP 0.3 initial and intermediate segments
  4. Maintain final approach RNP value until WN507, then RNP 1.0
- \* When Wellington Approach not available mandatory 3500 ft applies at WITBY

**Effective: 21 MAY 20**

