

ELEV 41

CAT C

**WELLINGTON**

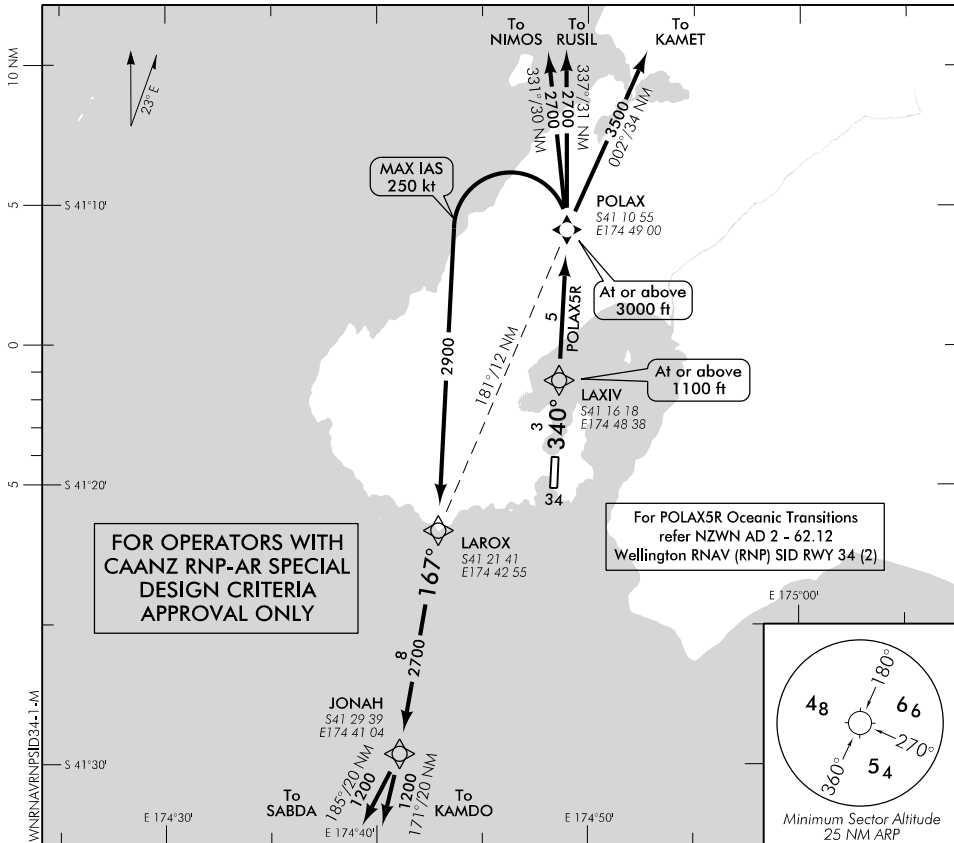
NZWN

**RNAV (RNP) SID RWY 34 (1)**

WELLINGTON APPROACH: 122.3

TOWER: 118.8 125.25

ATIS: 126.9



**ALL DEPARTURES**

Contact WELLINGTON APPROACH 122.3 MHz as soon as practicable prior to 1500 ft, or as instructed

- Note 1. Minimum net climb gradient 3.3% (200 ft/NM) unless higher stated  
 2. Approved operators to request POLAX5R prior to clearance delivery

- Requirements: 1. RNP 0.20 to POLAX, thence RNAV 1  
 2. Use Wellington QNH only

**RWY 34**

**POLAX FIVE ROMEO DEPARTURE – RNAV (RNP) (POLAX5R)**

MMN net climb gradient 6.8% (420 ft/NM) to 3000 ft

- Track 340° via LAXIV to POLAX (fly-over)
- Cross LAXIV at or above 1100 ft
- Cross POLAX at or above 3000 ft

**TRANSITIONS:**

**KAMDO**

- From POLAX, turn LEFT, direct to LAROX, MAX IAS 250 kt until turn complete
- Track 167° to JONAH
- Turn RIGHT, track 171° to KAMDO

**SABDA**

- From POLAX, turn LEFT, direct to LAROX, MAX IAS 250 kt until turn complete
- Track 167° to JONAH
- Turn RIGHT, track 185° to SABDA

**NIMOS**

- From POLAX, turn LEFT, direct to NIMOS

**RUSIL**

- From POLAX, turn LEFT, direct to RUSIL

**KAMET**

- From POLAX, turn RIGHT, direct to KAMET

Effective: 30 JAN 20

Changes from 7 NOV 19: Designator change only.

ELEV 41

CAT C

WELLINGTON

NZWN

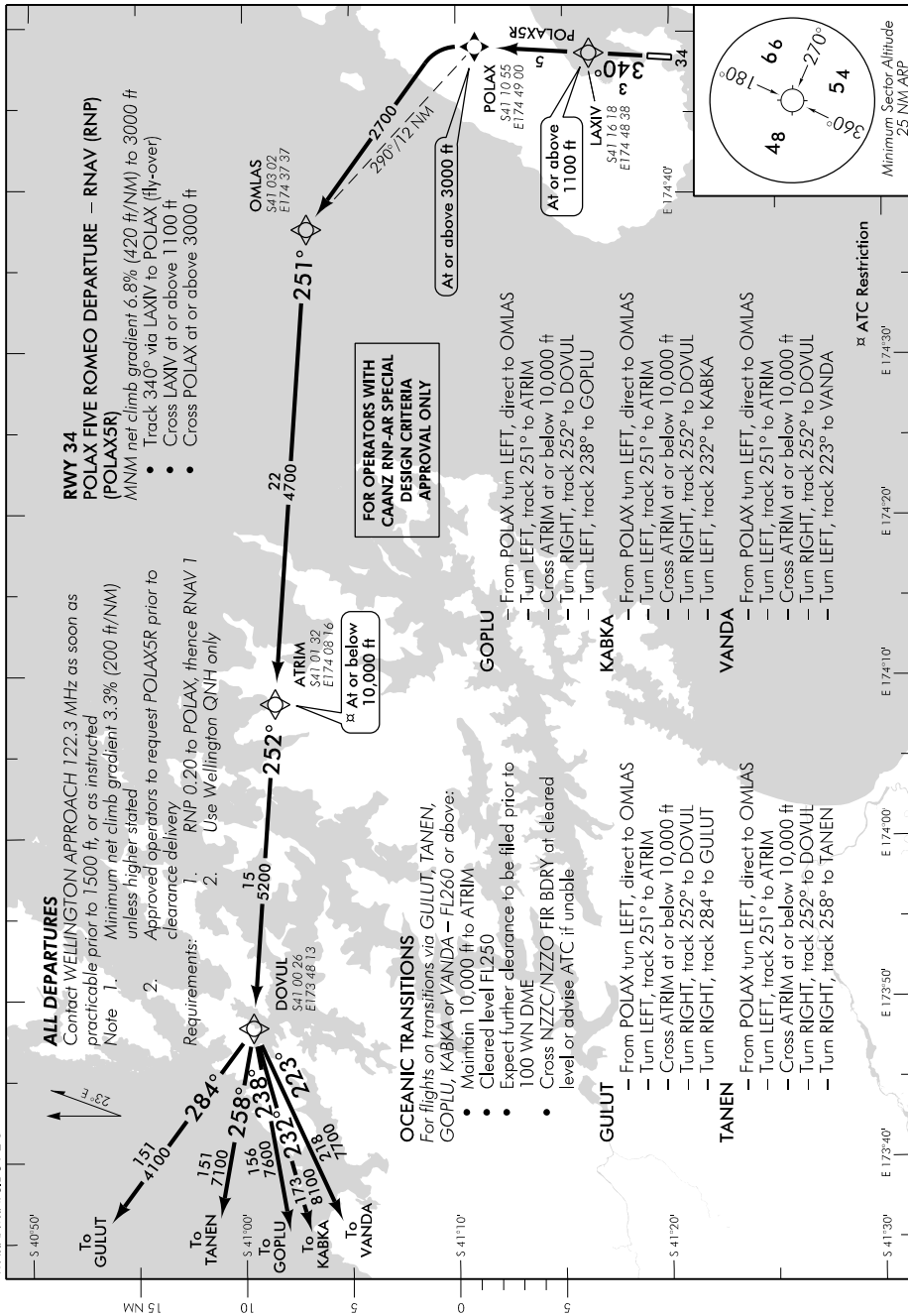
RNAV (RNP) SID RWY 34 (2)

WELLINGTON APPROACH: 122.3

TOWER: 118.8 125.25

ATIS: 126.9

WNRNVRNPSID34-2-B



Changes from 7 NOV 19: ACFT CAT corrected, approval only label added, POLAX to OMLAS track depiction.

Effective: 30 JAN 20