

ELEV 41

CAT A,B,C,D

WELLINGTON

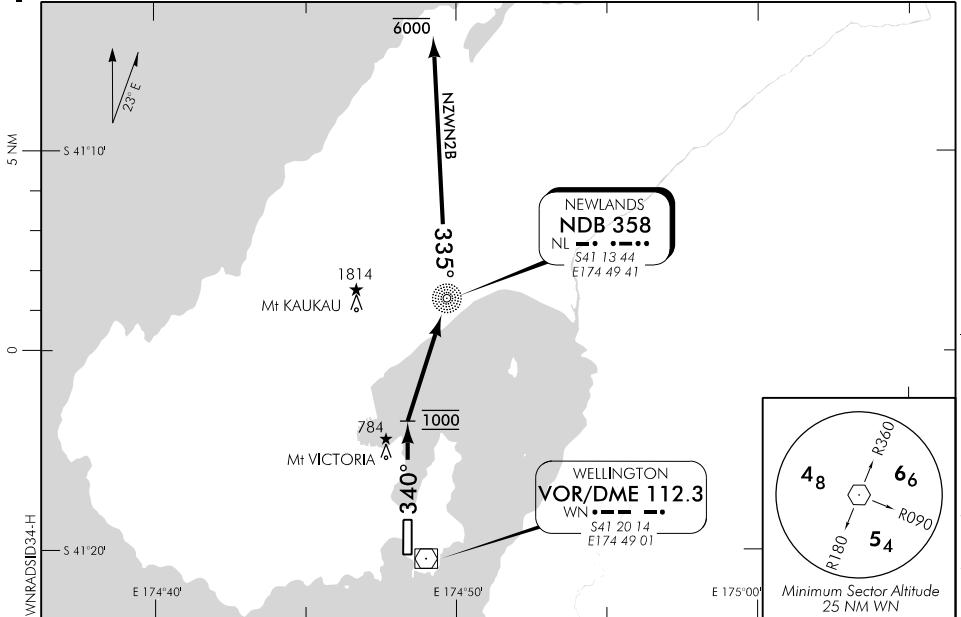
NZWN

RADAR SID RWY 34

WELLINGTON APPROACH: 122.3

TOWER: 118.8 125.25

ATIS: 126.9



Changes from 13 SEP 18: WN2B replaces WN1B.

ALL DEPARTURES

Contact WELLINGTON APPROACH 122.3 MHz as soon as practicable prior to 1500 ft, or as instructed

- Note:
1. Minimum net climb gradient 3.3% (200 ft/NM) unless higher stated
 2. **CAT B aircraft speed restriction MNM 150 kt MAX 170 kt** – if unable to comply advise Ground on start-up
 3. Turns prior to crossing RWY end not authorised

WELLINGTON TWO BRAVO DEPARTURE – RADAR (NZWN2B)

MNM net climb gradient 6.7% (410 ft/NM) to 2000 ft

- Track 340° (RWY Centreline) to 1000 ft
- Turn RIGHT, direct to NL NDB
- At NL NDB turn LEFT bearing 335° from NL NDB
- Maintain 6000 ft
- Expect radar vectors

OCEANIC TRANSITION

For flights that will cross the NZCC/NZZO FIR BDRY on any track from GULUT south to VANDA – FL260 or above

- At completion of SID track direct to Oceanic boundary point or as directed by radar
- Cleared level FL250
- Expect further clearance to filed level prior to 100 WN DME
- Cross NZCC/NZZO FIR BDRY at cleared level or advise ATC if unable

Effective: 7 NOV 19

