

ELEV 41

CAT A,B,C,D

WELLINGTON

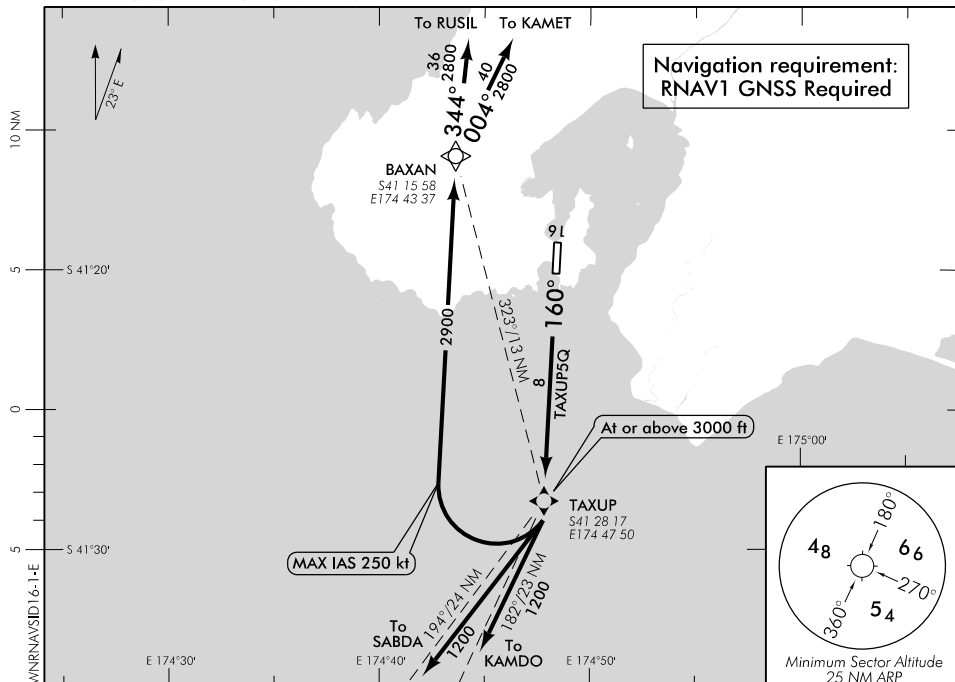
NZWN

RNAV SID RWY 16 (1)

WELLINGTON APPROACH: 122.3

TOWER: 118.8 125.25

ATIS: 126.9



Changes from 7 NOV 19: TAXUP MAX IAS label moved.

ALL DEPARTURES

Contact WELLINGTON APPROACH 122.3 MHz as soon as practicable prior to 1500 ft, or as instructed

- Note 1. Minimum net climb gradient 3.3% (200 ft/NM) unless higher stated
 2. ATC requirement: **CAT B aircraft speed restriction MNM 150 kt, MAX 170 kt to TAXUP**
 – if unable to comply advise Ground on start-up

RWY 16**TAXUP FIVE QUEBEC DEPARTURE – RNAV (GNSS) (TAXUP5Q)**

MNM net climb gradient 6.8% (420 ft/NM) to 3000 ft

- Track 160° to TAXUP (fly-over)
- Cross TAXUP at or above 3000 ft

TRANSITIONS:**KAMDO**

- From TAXUP, turn RIGHT, direct to KAMDO

SABDA

- From TAXUP, turn RIGHT, direct to SABDA

RUSIL

- From TAXUP, turn RIGHT, direct to BAXAN, MAX IAS 250 kt until turn complete
- Track 344° to RUSIL

KAMET

- From TAXUP, turn RIGHT, direct to BAXAN, MAX IAS 250 kt until turn complete
- Track 004° to KAMET

Effective: 30 JAN 20

ELEV 41

CAT A,B,C

WELLINGTON

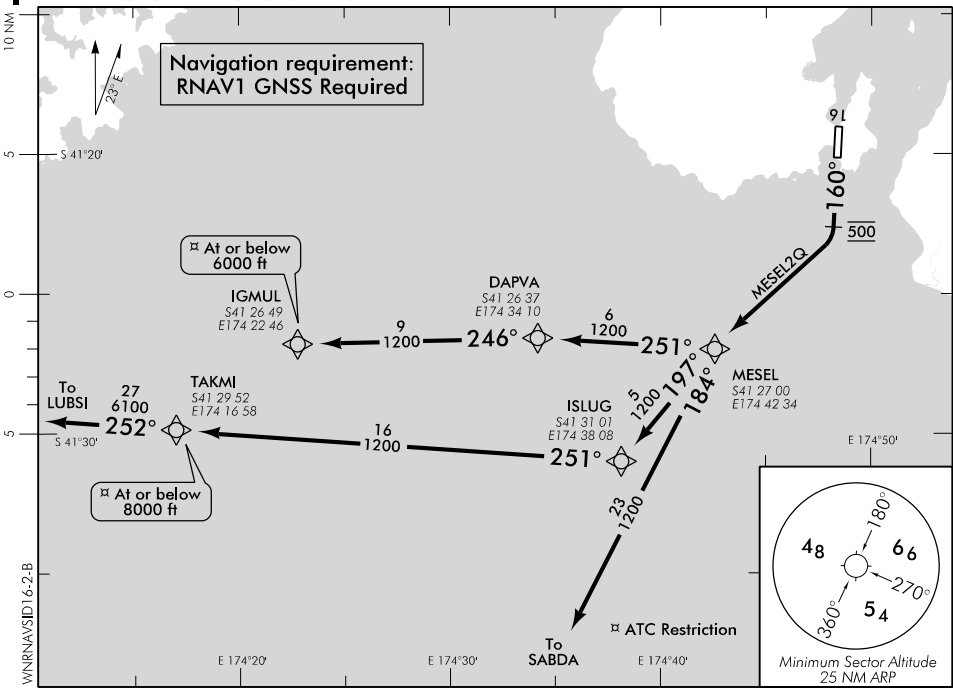
NZWN

RNAV SID RWY 16 (2)

WELLINGTON APPROACH: 122.3

TOWER: 118.8 125.25

ATIS: 126.9



Changes from 24 MAY 18: LUBSI and IGMUL transitions amended, TWR secondary FREQ.

ALL DEPARTURES

Contact WELLINGTON APPROACH 122.3 MHz as soon as practicable prior to 1500 ft, or as instructed

- Note 1. Minimum net climb gradient 3.3% (200 ft/NM) unless higher stated
 2. ATC requirement:

CAT B aircraft speed restriction MNM 150 kt, MAX 170 kt to MESEL
 – if unable to comply advise Ground on start-up.

RWY 16

MESEL TWO QUEBEC DEPARTURE – RNAV (MESEL2Q)

MNM net climb gradient 7.0% (430 ft/NM) to 500 ft

Airspace containment – MNM net climb gradient 7.0% (430 ft/NM) to 2500 ft

- Turns prior to crossing RWY end not authorised
- Maintain RWY centreline to 500 ft
- Turn RIGHT, direct to MESEL

TRANSITIONS:

SABDA

– From MESEL, track 184° to SABDA

LUBSI

- From MESEL, track 197° to ISLUG
- Turn RIGHT, track 251° to TAKMI
- Cross TAKMI at or below 8000 ft
- Turn RIGHT, track 252° to LUBSI

IGMUL

- From MESEL, track 251° to DAPVA
- Turn LEFT, track 246° to IGMUL
- Cross IGMUL at or below 6000 ft