

ELEV 41

CAT A,B,C,D

WELLINGTON

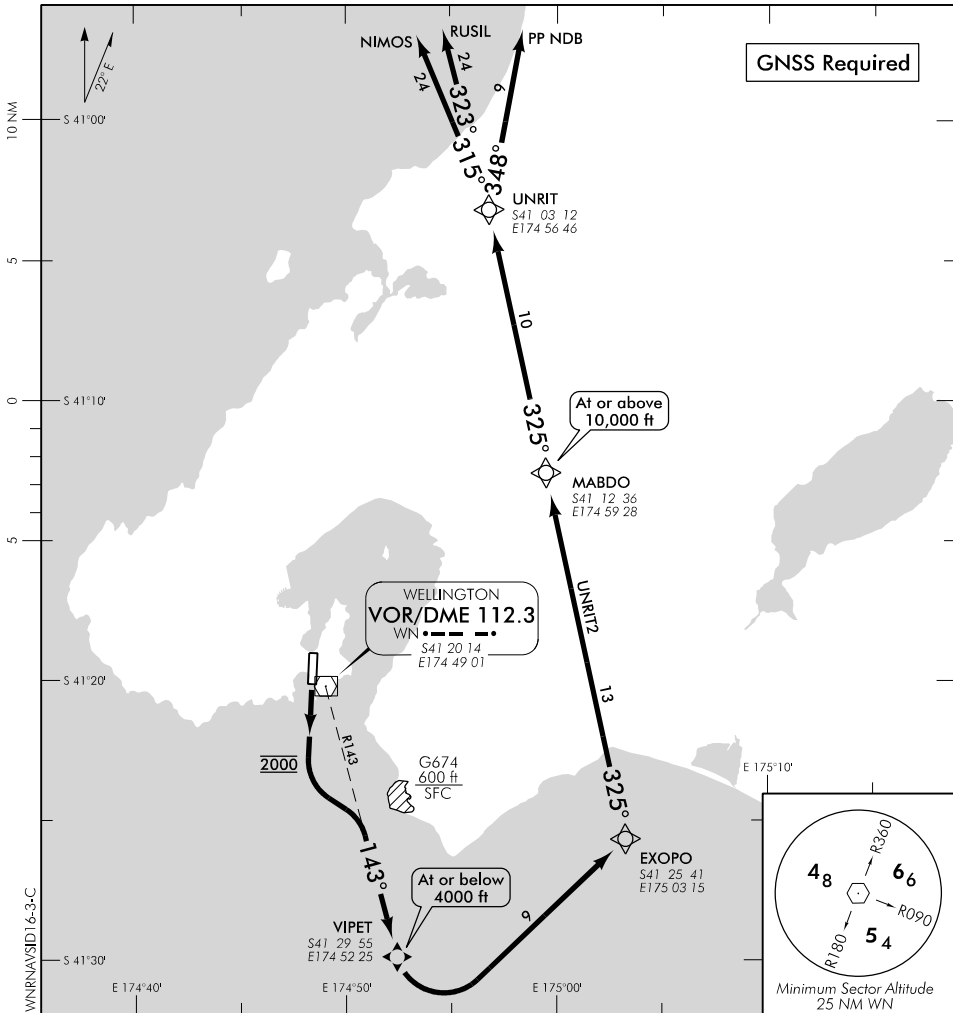
NZWN

RNAV SID RWY 16 (3)

CONTROL: 122.3

TOWER: 118.8 120.0

ATIS: 126.9



- Note
1. Contact WELLINGTON CONTROL 122.3 as soon as practicable prior to 1500 ft, or as instructed.
 2. MNM net climb gradient 6.0% (370 ft/NM) to 10,000 ft
 3. **CAT B aircraft speed restriction MNM 150 kt MAX 170 kt** – if unable to comply advise GROUND on start-up.

UNRIT TWO DEPARTURE – RNAV (UNRIT2)

- Maintain RWY centreline to 2000 ft
ATC may instruct aircraft to turn at 1000 ft or above
Turns prior to crossing RWY end not authorised
- Turn LEFT, intercept track 143° to VIPET
- Maintain 4000 ft to VIPET
- At VIPET fly-over WPT, turn LEFT direct EXOPO
- At EXOPO turn LEFT track 325° to MABDO, then UNRIT
- Cross MABDO at or above 10,000 ft

TRANSITIONS:

- NIMOS** – From UNRIT track 315° to NIMOS
- RUSIL** – From UNRIT track 323° to RUSIL
- PP NDB** – From UNRIT track 348° to PP NDB

Effective: 31 MAR 16

Changes from 4 FEB 16: MNM SECT ALT.

ELEV 41

CAT A,B,C,D

WELLINGTON

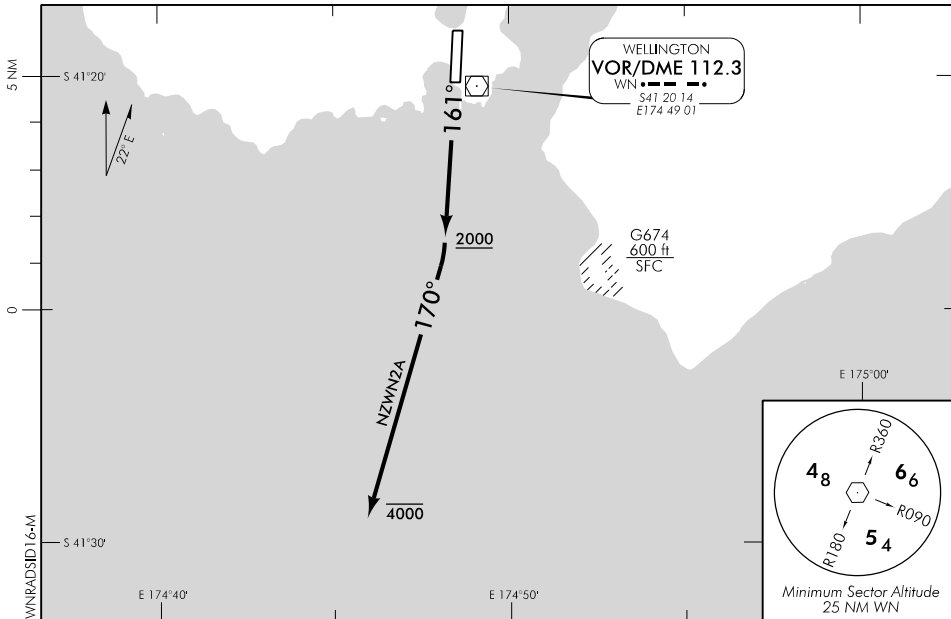
NZWN

RADAR SID RWY 16

CONTROL: 122.3

TOWER: 118.8 120.0

ATIS: 126.9



Changes from 31 MAR 16: MOTIKO Oceanic transition reference amended to GULUT.

ALL DEPARTURES

Contact WELLINGTON CONTROL 122.3 MHz as soon as practicable prior to 1500 ft, or as instructed.

- Note
1. Minimum net climb gradient 5.8% (360 ft/NM)
 2. **CAT B aircraft speed restriction MNM 150 kt, MAX 170 kt** – if unable to comply advise Ground or Delivery prior to start-up
 3. Turns prior to crossing RWY end not authorised

WELLINGTON TWO ALFA DEPARTURE – RADAR (NZWN2A)

- Maintain RWY centreline (161°) to MNM 2000 ft
- At 2000 ft turn to heading 170° or other ATC prescribed heading
- Maintain 4000 ft
- Expect radar vectors

Note: ATC may instruct aircraft to fly a radar heading after passing 1000 ft

OCEANIC TRANSITION

For flights that will cross the NZCC/NZZO FIR BDRY on any track from GULUT south to VANDA – FL260 or above

- At completion of SID track direct to Oceanic boundary point or as directed by radar
- Cleared level FL250
- Expect further clearance to filed level prior to 100 NM
- Cross NZCC/NZZO FIR BDRY at cleared level or advise ATC if unable