

ELEV 41

CAT A,B,C,D

WELLINGTON

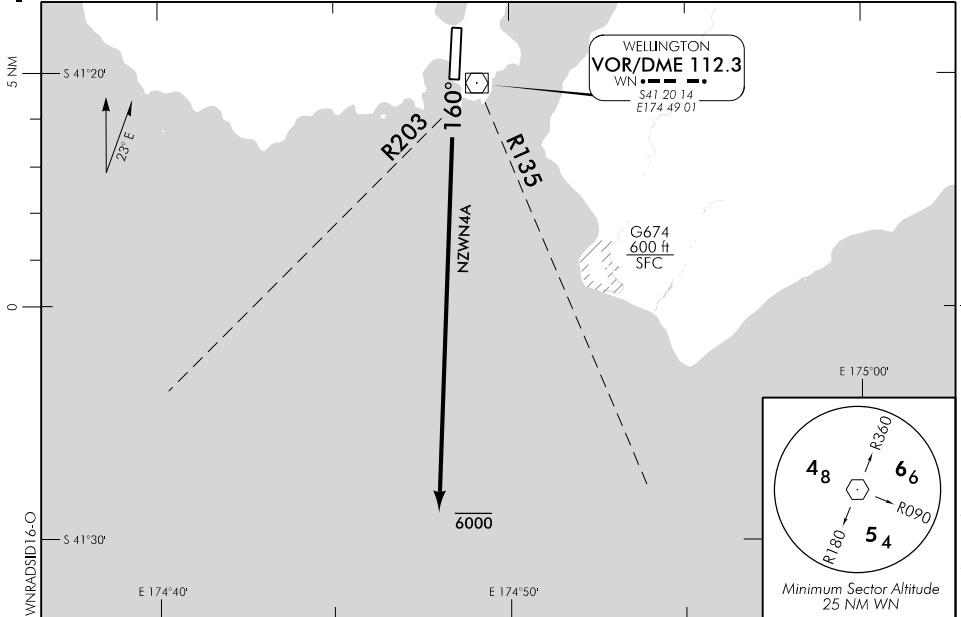
NZWN

RADAR SID RWY 16

WELLINGTON APPROACH: 122.3

TOWER: 118.8 125.25

ATIS: 126.9



Changes from 24 MAY 18: NZWN4A replaces NZWN3A, TWR secondary FREQ.

ALL DEPARTURES

Contact WELLINGTON APPROACH 122.3 MHz as soon as practicable prior to 1500 ft, or as instructed

- Note
1. Minimum net climb gradient 3.3% (200 ft/NM) unless higher stated
 2. **CAT B aircraft speed restriction MNM 150 kt, MAX 170 kt** – if unable to comply advise Ground on start-up
 3. Turns prior to crossing RWY end not authorised

WELLINGTON FOUR ALFA DEPARTURE – RADAR (NZWN4A)

MNM net climb gradient 4.9% (300 ft/NM) to 3200 ft

- Track 160° (RWY Centreline)
- Maintain 6000 ft
- Expect radar vectors

Note: After passing 1000 ft ATC may instruct aircraft to fly a radar heading within a sector encompassing R135 clockwise to R203 from WN VOR

OCEANIC TRANSITION

For flights that will cross the NZCC/NZZO FIR BDRY on any track from GULUT south to VANDA – FL260 or above

- At completion of SID track direct to Oceanic boundary point or as directed by radar
- Cleared level FL250
- Expect further clearance to filed level prior to 100 WN DME
- Cross NZCC/NZZO FIR BDRY at cleared level or advise ATC if unable

