

ELEV 41

CAT A,B,C,D

WELLINGTON

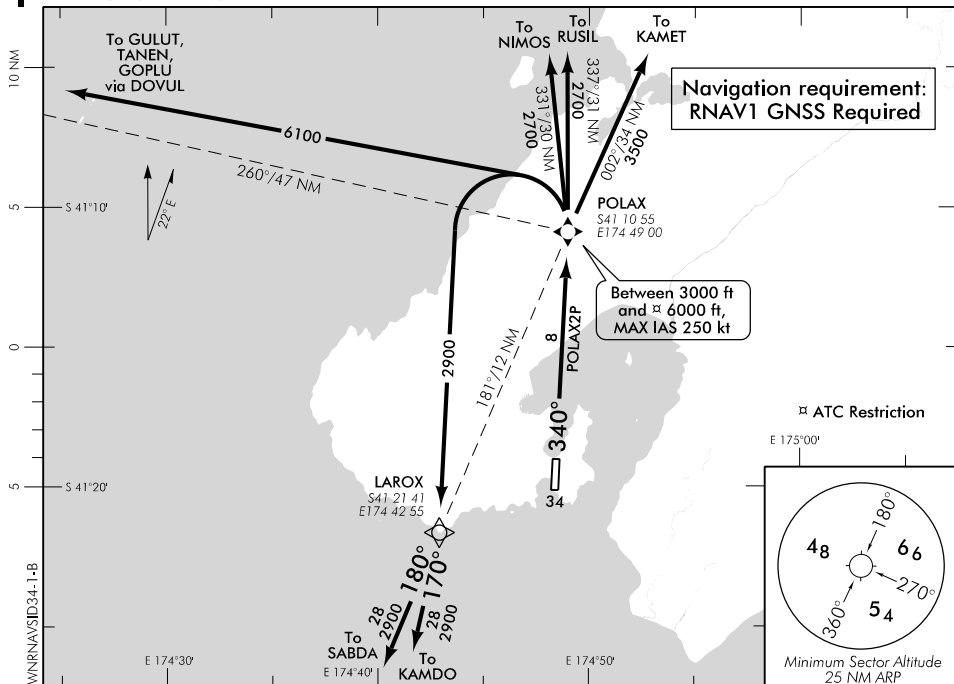
NZWN

RNAV SID RWY 34 (1)

APPROACH: 122.3

TOWER: 118.8 125.25

ATIS: 126.9

**ALL DEPARTURES**

Contact WELLINGTON APPROACH 122.3 MHz as soon as practicable prior to 1500 ft, or as instructed

Note 1. Minimum net climb gradient 3.3% (200 ft/NM) unless higher stated

2. ATC requirement: **CAT B aircraft speed restriction MNM 150 kt, MAX 170 kt to POLAX**
 – if unable to comply advise Ground on start-up

RWY 34**POLAX TWO PAPA DEPARTURE – RNAV (POLAX2P)**

MNM net climb gradient 6.8% (420 ft/NM) to 3000 ft

- Track 340° to POLAX (fly-over)
- Cross POLAX between 3000 ft and 6000 ft

TRANSITIONS:**KAMDO**

- From POLAX, turn LEFT, direct to LAROX, MAX IAS 250 kt until turn complete
- Track 170° to KAMDO

SABDA

- From POLAX, turn LEFT, direct to LAROX, MAX IAS 250 kt until turn complete
- Track 180° to SABDA

NIMOS

- From POLAX, turn LEFT, direct to NIMOS, MAX IAS 250 kt until turn complete

RUSIL

- From POLAX, turn LEFT, direct to RUSIL, MAX IAS 250 kt until turn complete

KAMET

- From POLAX, turn RIGHT, direct to KAMET, MAX IAS 250 kt until turn complete

OCEANIC TRANSITIONS:

For flights on transitions via GOPLU, TANEN or GULUT – FL260 or above:

- Cleared level FL250
- Expect further clearance to be filed prior to 100 WN DME
- Cross NZCC/NZZO FIR BDRY at cleared level or advise ATC if unable

GOPLU

- From POLAX, turn LEFT, direct to DOVUL, MAX IAS 250 kt until turn complete
- Track 238° to GOPLU

TANEN

- From POLAX, turn LEFT, direct to DOVUL, MAX IAS 250 kt until turn complete
- Track 258° to TANEN

GULUT

- From POLAX, turn LEFT, direct to DOVUL, MAX IAS 250 kt until turn complete
- Track 284° to GULUT

Effective: 8 NOV 18

ELEV 41

CAT A,B,C

WELLINGTON

NZWN

RNAV SID RWY 34 (2)

APPROACH: 122.3

TOWER: 118.8 120.0

ATIS: 126.9

ALL DEPARTURES

Contact WELLINGTON APPROACH 122.3 MHz as soon as practicable prior to 1500 ft, or as instructed

- Note 1. Minimum net climb gradient 3.3% (200 ft/NM) unless higher stated
2. ATC requirement:

CAT B aircraft speed restriction MNM 150 kt, MAX 170 kt to ISNIP

– if unable to comply advise Ground on start-up

For flights at 12,000 ft or above, cross NIMOS or RUSIL at or above 12,000 ft

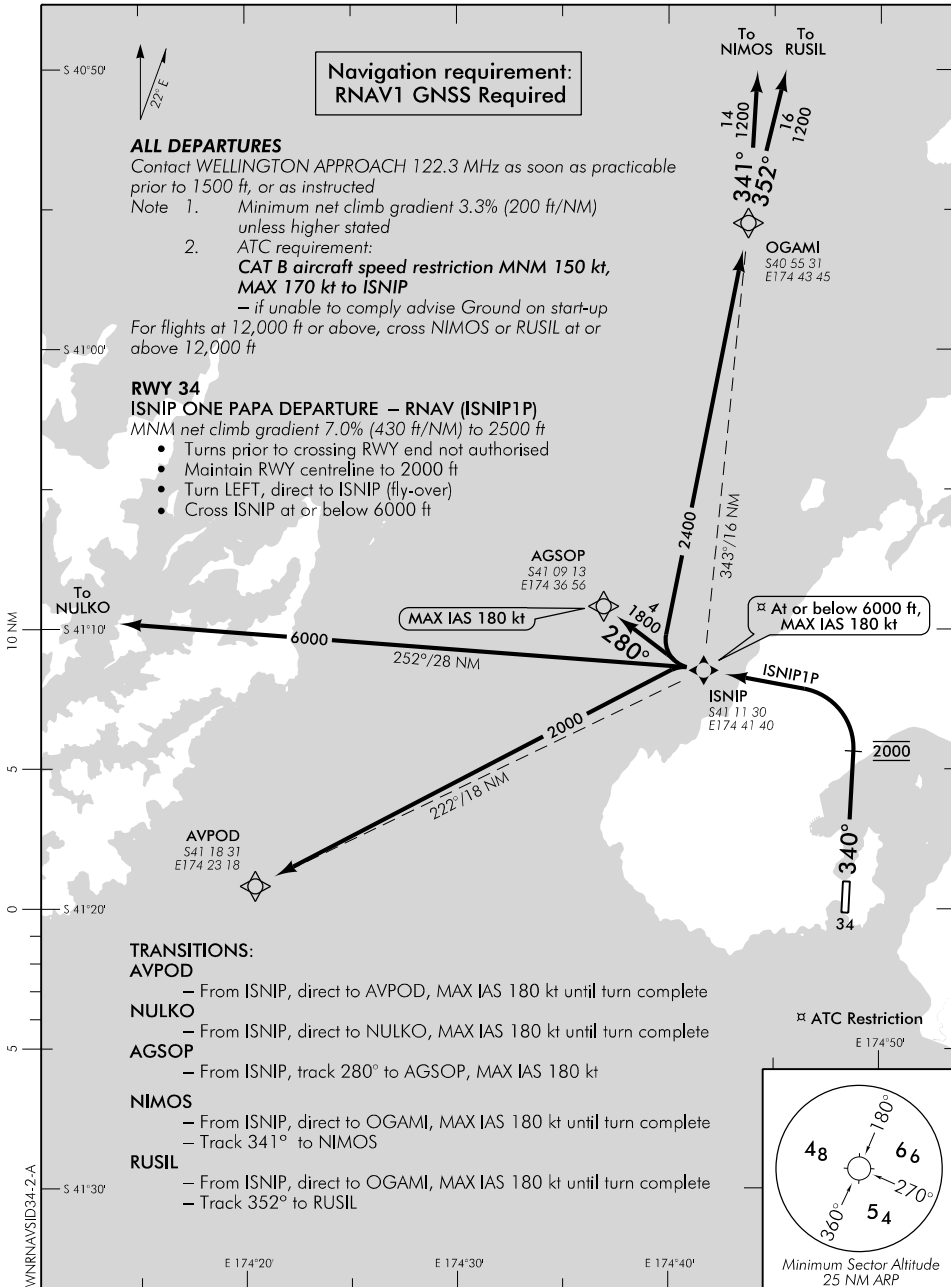
RWY 34

ISNIP ONE PAPA DEPARTURE – RNAV (ISNIP1P)

MNM net climb gradient 7.0% (430 ft/NM) to 2500 ft

- Turns prior to crossing RWY end not authorised
- Maintain RWY centreline to 2000 ft
- Turn LEFT, direct to ISNIP (fly-over)
- Cross ISNIP at or below 6000 ft

Navigation requirement:
RNAV1 GNSS Required



TRANSITIONS:

AVPOD

– From ISNIP, direct to AVPOD, MAX IAS 180 kt until turn complete

NULKO

– From ISNIP, direct to NULKO, MAX IAS 180 kt until turn complete

AGSOP

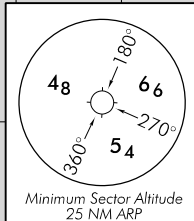
– From ISNIP, track 280° to AGSOP, MAX IAS 180 kt

NIMOS

– From ISNIP, direct to OGAMI, MAX IAS 180 kt until turn complete
– Track 341° to NIMOS

RUSIL

– From ISNIP, direct to OGAMI, MAX IAS 180 kt until turn complete
– Track 352° to RUSIL



Effective: 24 MAY 18