

ELEV 41

CAT A,B,C,D

WELLINGTON

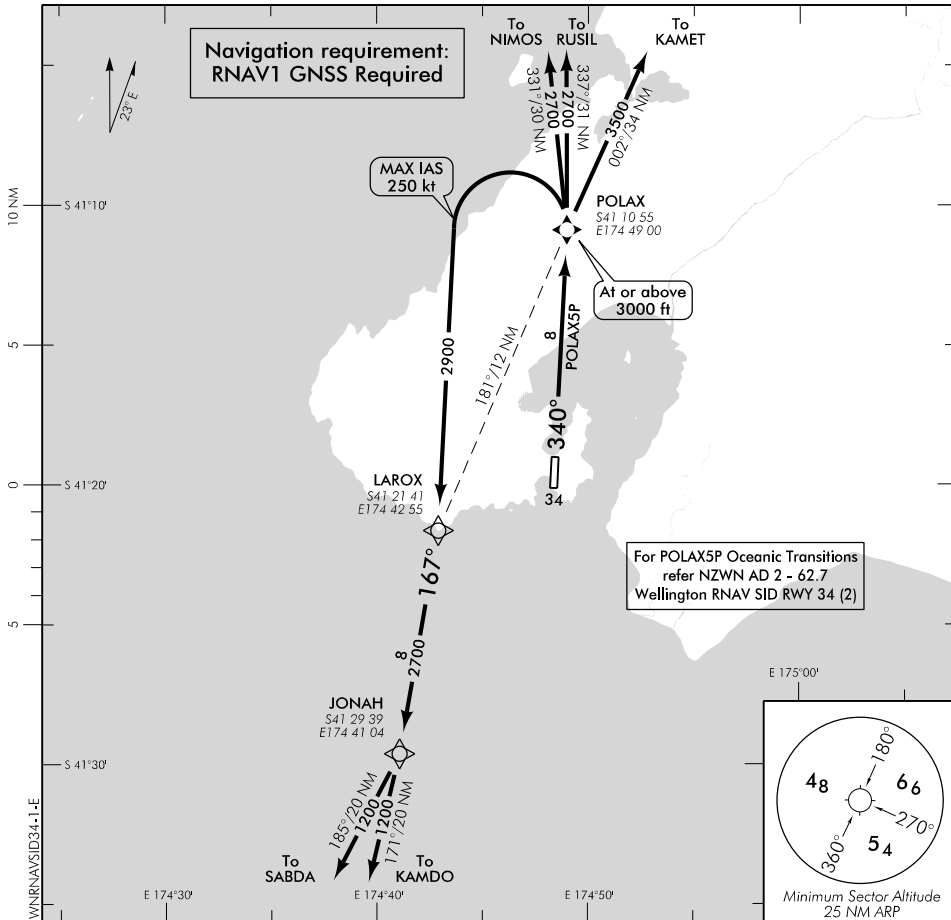
NZWN

RNAV SID RWY 34 (1)

WELLINGTON APPROACH: 122.3

TOWER: 118.8 125.25

ATIS: 126.9



ALL DEPARTURES

Contact WELLINGTON APPROACH 122.3 MHz as soon as practicable prior to 1500 ft, or as instructed

- Note 1. Minimum net climb gradient 3.3% (200 ft/NM) unless higher stated
- Note 2. ATC requirement: **CAT B aircraft speed restriction MNM 150 kt, MAX 170 kt to POLAX**
 – if unable to comply advise Ground on start-up

RWY 34

POLAX FIVE PAPA DEPARTURE – RNAV (GNSS) (POLAX5P)

MNM net climb gradient 6.8% (420 ft/NM) to 3000 ft

- Track 340° to POLAX (fly-over)
- Cross POLAX at or above 3000 ft

TRANSITIONS:

KAMDO

- From POLAX, turn LEFT, direct to LAROX, MAX IAS 250 kt until turn complete
- Track 167° to JONAH
- Turn RIGHT, track 171° to KAMDO

SABDA

- From POLAX, turn LEFT, direct to LAROX, MAX IAS 250 kt until turn complete
- Track 167° to JONAH
- Turn RIGHT, track 185° to SABDA

NIMOS

- From POLAX, turn LEFT, direct to NIMOS

RUSIL

- From POLAX, turn LEFT, direct to RUSIL

KAMET

- From POLAX, turn RIGHT, direct to KAMET

Effective: 30 JAN 20

Changes from 7 NOV 19; Designator change only.

ELEV 41

CAT A,B,C,D

NZWN

WELLINGTON

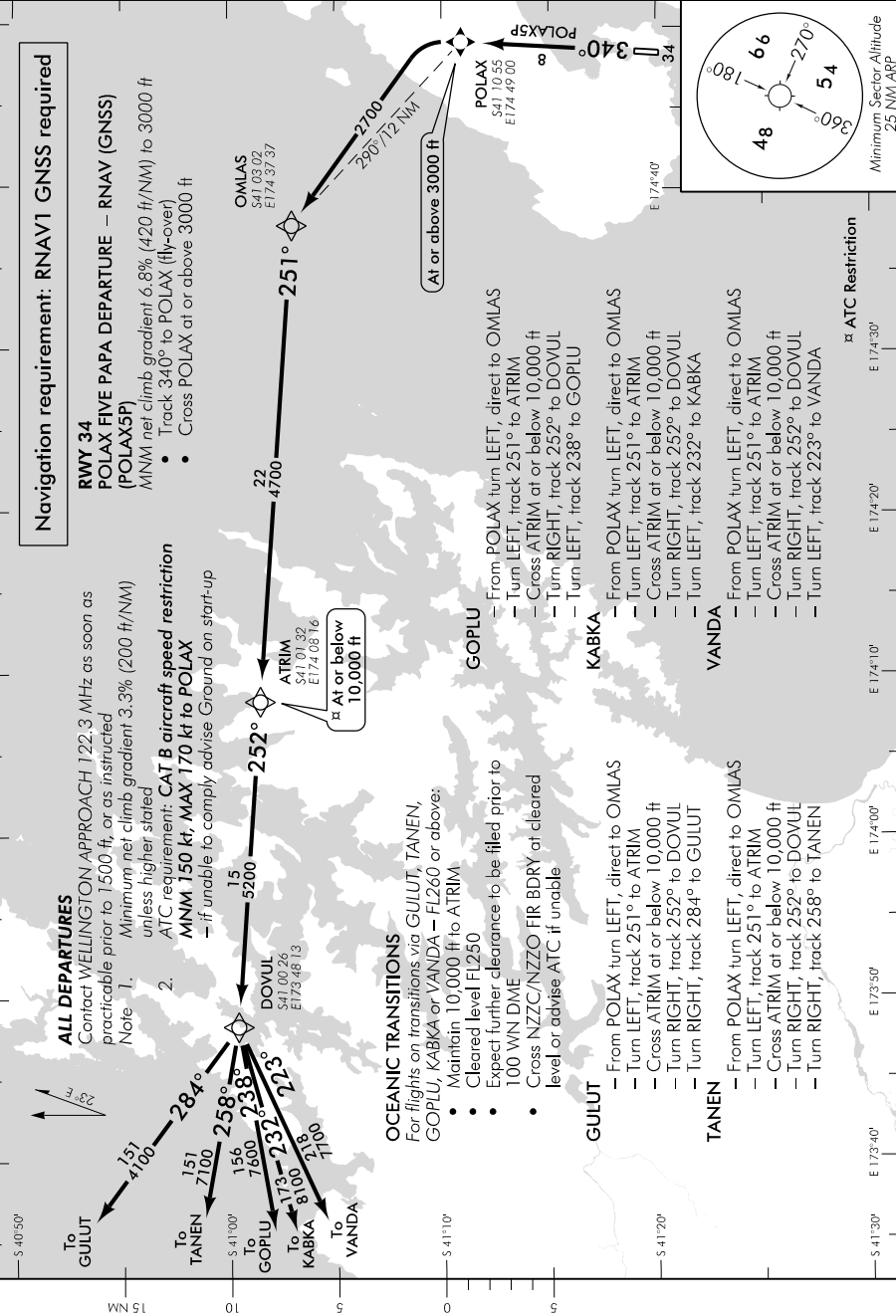
RNAV SID RWY 34 (2)

WELLINGTON APPROACH: 122.3

TOWER: 118.8 125.25

ATIS: 126.9

WNRNAV5ID34-2-C



Effective: 30 JAN 20

WELLINGTON RNAV SID RWY 34 (2)