

ELEV 41

CAT A,B,C

WELLINGTON

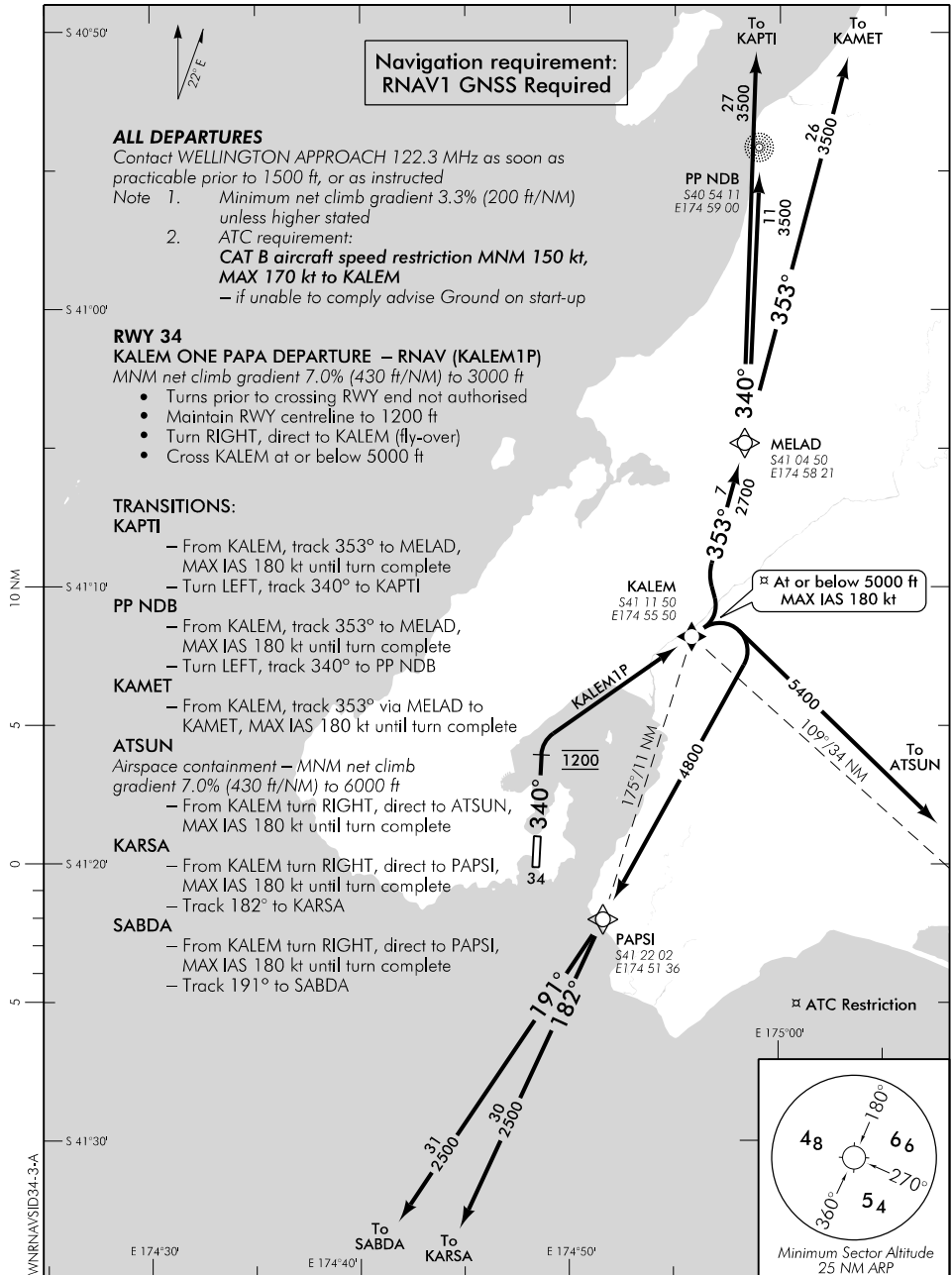
RNAV SID RWY 34 (3)

NZWN

APPROACH: 122.3

TOWER: 118.8 120.0

ATIS: 126.9



Effective: 24 MAY 18

ELEV 41

CAT C

WELLINGTON

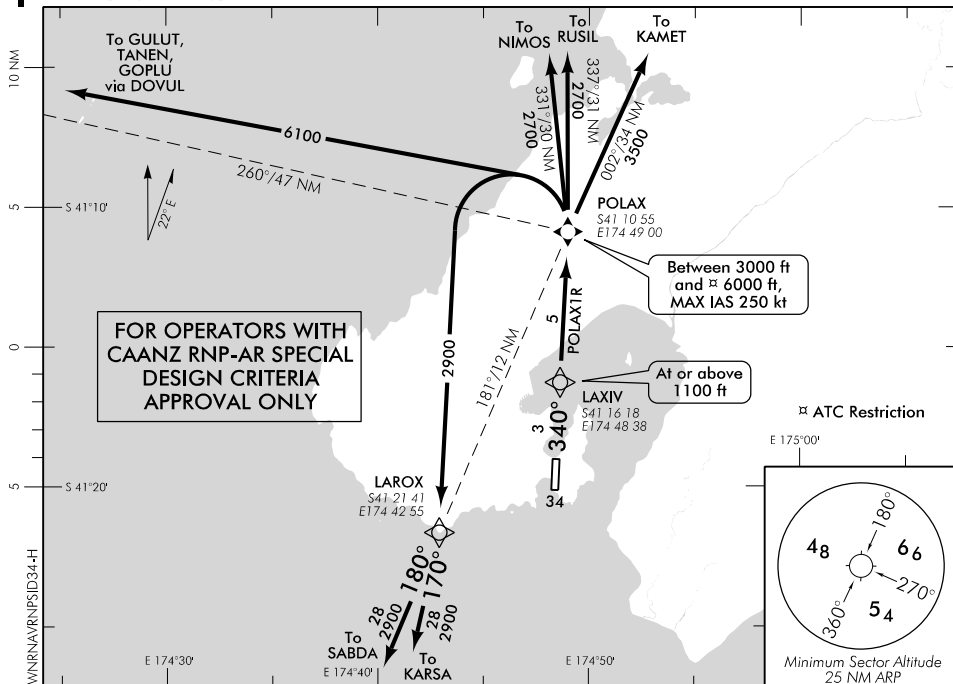
NZWN

RNAV (RNP) SID RWY 34

APPROACH: 122.3

TOWER: 118.8 120.0

ATIS: 126.9



Changes from 20 JUL 17: WITBY2B removed, POLAX1R added, approval text updated.

ALL DEPARTURES

Contact WELLINGTON APPROACH 122.3 MHz as soon as practicable prior to 1500 ft, or as instructed

- Note
1. Minimum net climb gradient 3.3% (200 ft/NM) unless higher stated
 2. Approved operators to request POLAX1R PRIOR TO CLEARANCE DELIVERY

- Requirements:
1. RNP 0.20 to POLAX, thence RNAV 1
 2. Use Wellington QNH only

RWY 34

POLAX ONE ROMEO DEPARTURE – RNAV (RNP) (POLAX1R)

NMN net climb gradient 6.8% (420 ft/NM) to 3000 ft

- Track 340° via LAXIV to POLAX (fly-over)
- Cross LAXIV at or above 1100 ft
- Cross POLAX between 3000 ft and 6000 ft

TRANSITIONS:

KARSA

- From POLAX, turn LEFT, direct to LAROX, MAX IAS 250 kt until turn complete
- Track 170° to KARSA

SABDA

- From POLAX, turn LEFT, direct to LAROX, MAX IAS 250 kt until turn complete
- Track 180° to SABDA

NIMOS

- From POLAX, turn LEFT, direct to NIMOS, MAX IAS 250 kt until turn complete

RUSIL

- From POLAX, turn LEFT, direct to RUSIL, MAX IAS 250 kt until turn complete

KAMET

- From POLAX, turn RIGHT, direct to KAMET, MAX IAS 250 kt until turn complete

OCEANIC TRANSITIONS:

For flights on transitions via GOPLU, TANEN, GULUT or CUSTOM – FL260 or above:

- Cleared level FL250
- Expect further clearance to be filed prior to 100 WN DME
- Cross NZCC/NZZO FIR BDRY at cleared level or advise ATC if unable

GOPLU

- From POLAX, turn LEFT, direct to DOVUL, MAX IAS 250 kt until turn complete
- Track 238° to GOPLU

TANEN

- From POLAX, turn LEFT, direct to DOVUL, MAX IAS 250 kt until turn complete
- Track 258° to TANEN

GULUT

- From POLAX, turn LEFT, direct to DOVUL, MAX IAS 250 kt until turn complete
- Track 284° to GULUT

CUSTOM

For flights leaving NZCC on unevaluated routes

- From POLAX, turn LEFT, direct to DOVUL, MAX IAS 250 kt until turn complete
- From DOVUL, track to the flight plan NZCC/NZZO boundary point

Effective: 24 MAY 18