

ELEV 41

CAT A,B,C

WELLINGTON

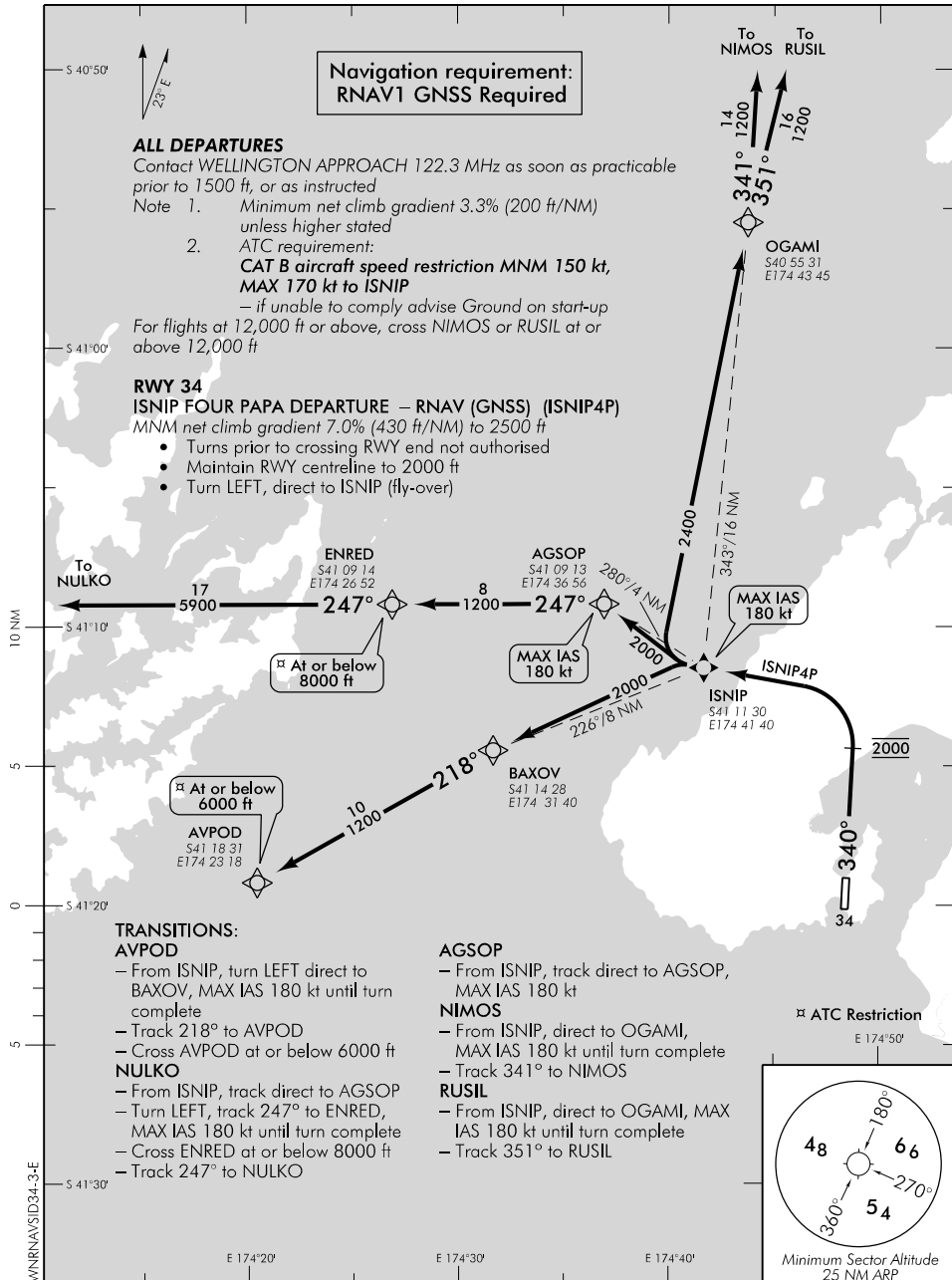
NZWN

RNAV SID RWY 34 (3)

WELLINGTON APPROACH: 122.3

TOWER: 118.8 125.25

ATIS: 126.9



Changes from 30 JAN 20: ISNIP3P becomes ISNIP4P, AGSOP transition text amended.

Effective: 21 MAY 20

ELEV 41

CAT A,B,C

WELLINGTON

NZWN

RNAV SID RWY 34 (4)

WELLINGTON APPROACH: 122.3

TOWER: 118.8 125.25

ATIS: 126.9

Navigation requirement: RNAV1 GNSS Required

ALL DEPARTURES

Contact WELLINGTON APPROACH 122.3 MHz as soon as practicable prior to 1500 ft, or as instructed. Advise departure being flown

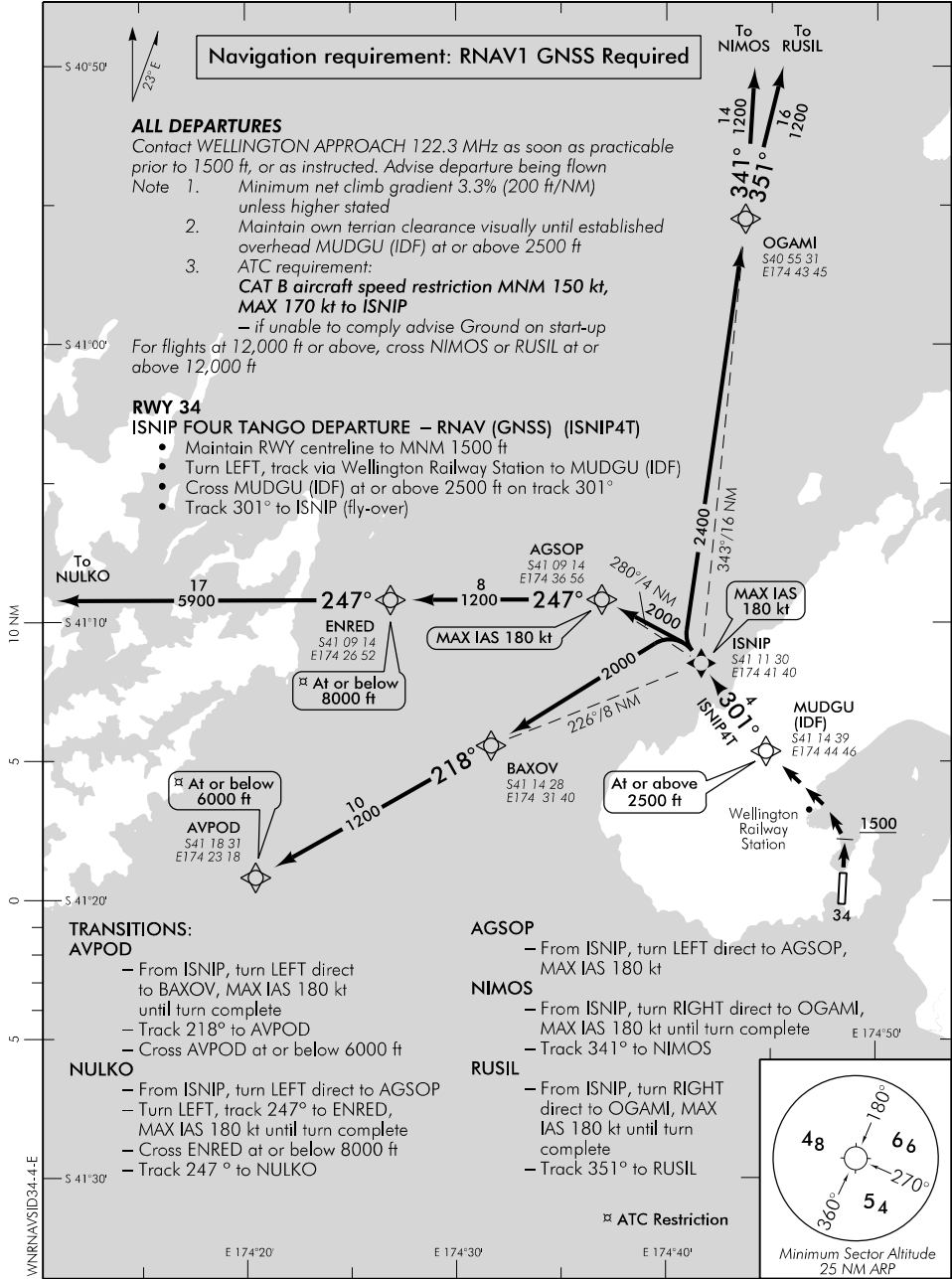
- Note 1. Minimum net climb gradient 3.3% (200 ft/NM) unless higher stated
2. Maintain own terrain clearance visually until established overhead MUDGU (IDF) at or above 2500 ft
3. ATC requirement:
CAT B aircraft speed restriction MNM 150 kt, MAX 170 kt to ISNIP

– if unable to comply advise Ground on start-up
For flights at 12,000 ft or above, cross NIMOS or RUSIL at or above 12,000 ft

RWY 34

ISNIP FOUR TANGO DEPARTURE – RNAV (GNSS) (ISNIP4T)

- Maintain RWY centreline to MNM 1500 ft
- Turn LEFT, track via Wellington Railway Station to MUDGU (IDF)
- Cross MUDGU (IDF) at or above 2500 ft on track 301°
- Track 301° to ISNIP (fly-over)



Changes from 30 JAN 20: ISNIP3T becomes ISNIP4T, AGSOP transition text amended.

TRANSITIONS:

AVPOD

- From ISNIP, turn LEFT direct to BAXOV, MAX IAS 180 kt until turn complete
- Track 218° to AVPOD
- Cross AVPOD at or below 6000 ft

NULKO

- From ISNIP, turn LEFT direct to AGSOP
- Turn LEFT, track 247° to ENRED, MAX IAS 180 kt until turn complete
- Cross ENRED at or below 8000 ft
- Track 247° to NULKO

AGSOP

- From ISNIP, turn LEFT direct to AGSOP, MAX IAS 180 kt

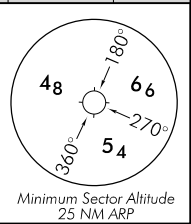
NIMOS

- From ISNIP, turn RIGHT direct to OGAMI, MAX IAS 180 kt until turn complete
- Track 341° to NIMOS

RUSIL

- From ISNIP, turn RIGHT direct to OGAMI, MAX IAS 180 kt until turn complete
- Track 351° to RUSIL

ATC Restriction



Effective: 21 MAY 20